

The logo for the University of Florida, consisting of the letters 'UF' in white on an orange square background.

# UF Project 689

**Hamilton Center for Classical and Civic Education**

**Program Review**

Project Manager David W. Wood

## Land Use and Facilities Planning

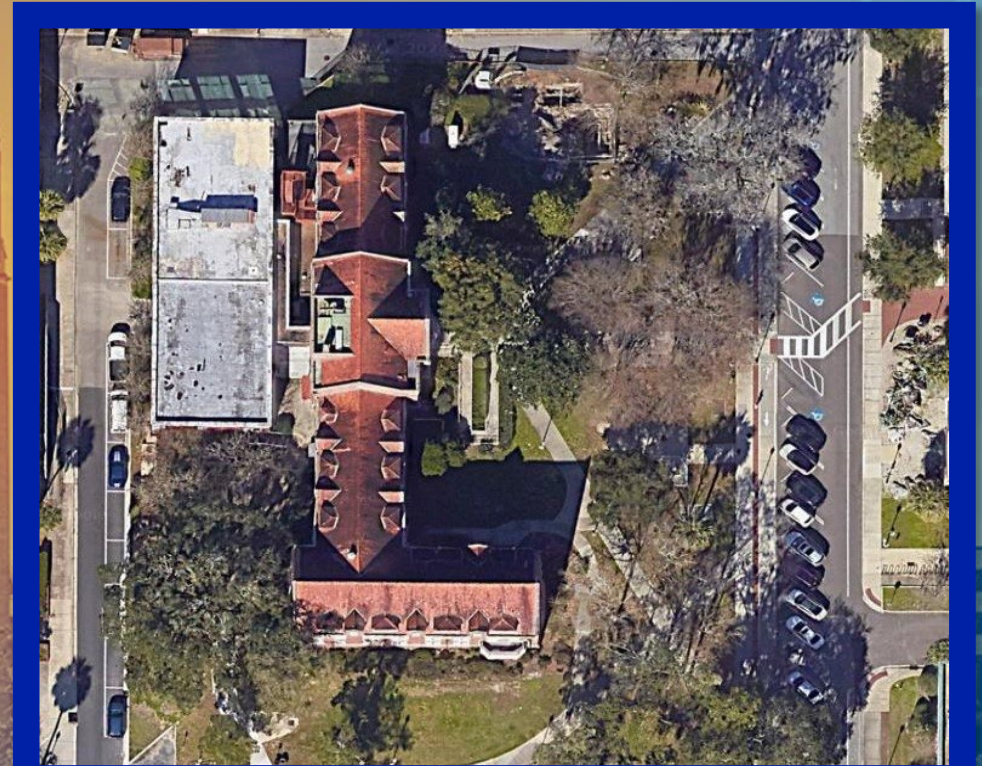
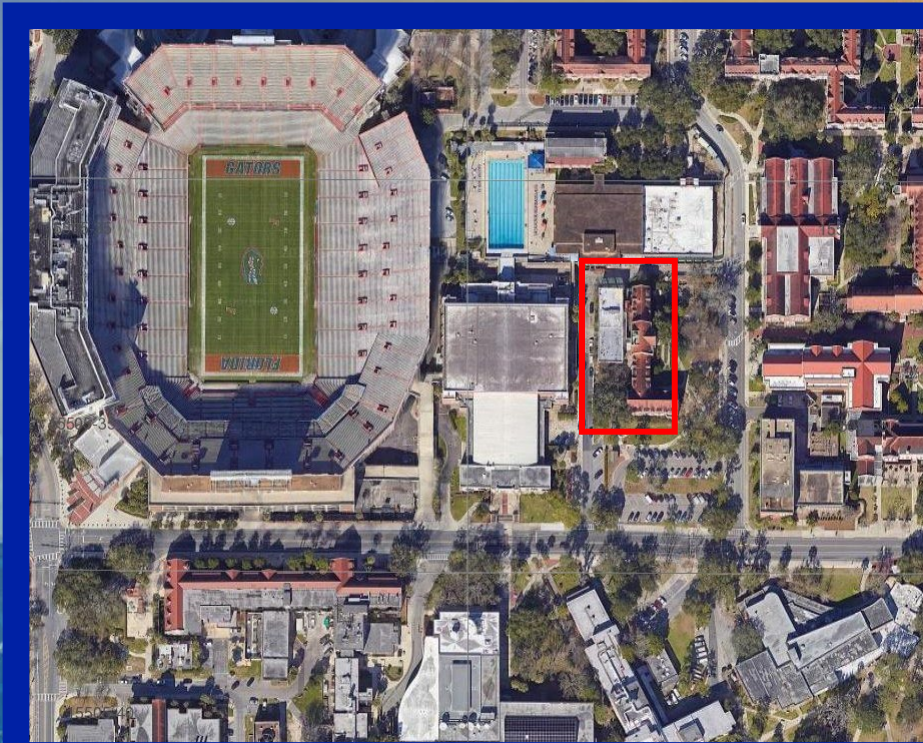
April 1, 2025





# UF Project 689

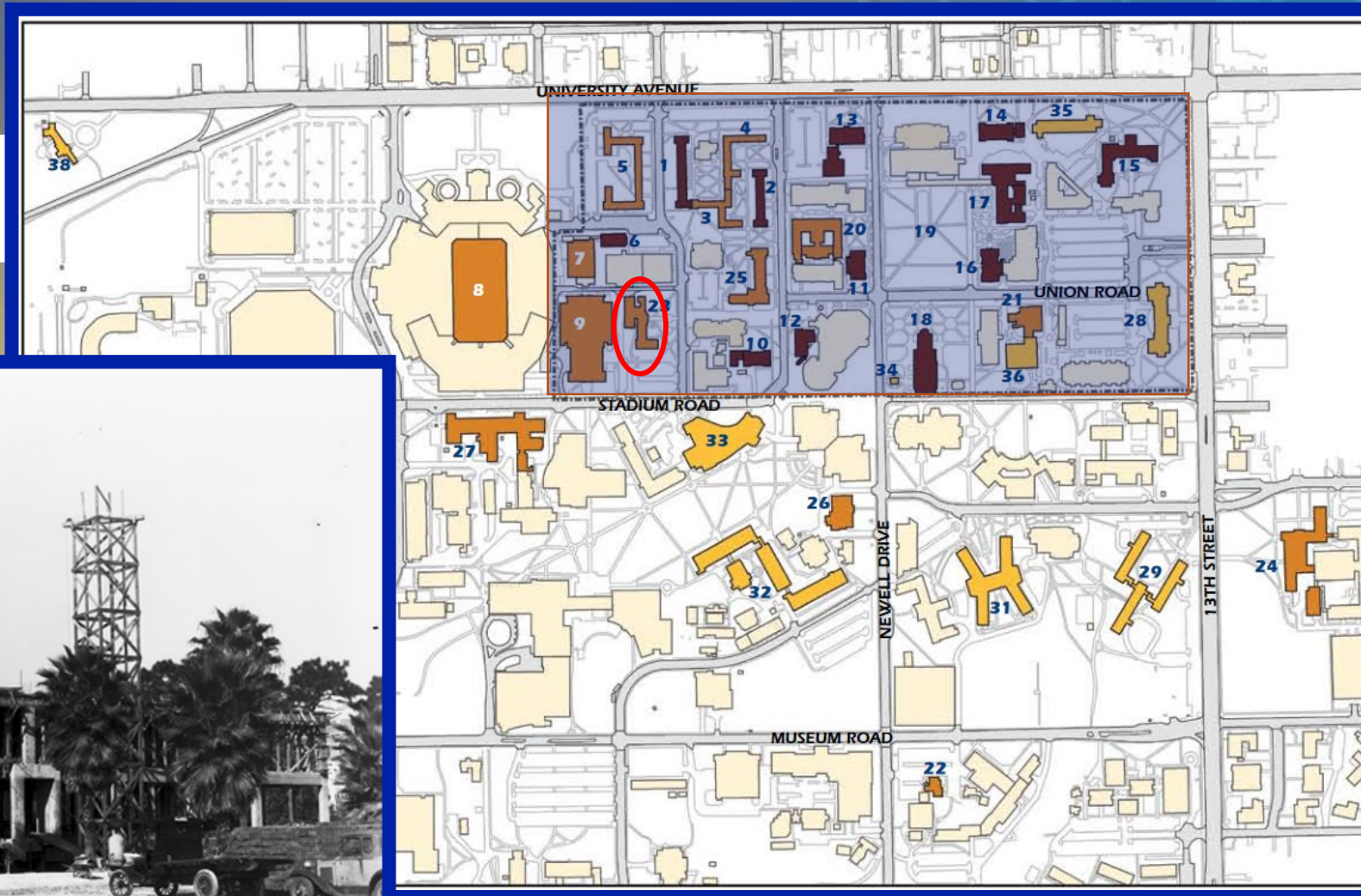
## PROJECT OVERVIEW





# UF Project 689

## HISTORIC DISTRICT





# UF Project 689

## SITE OVERVIEW

- Building is occupied on 2 floors only
- Building is compliant with the Future Land Use
- This site is located within the Historic District

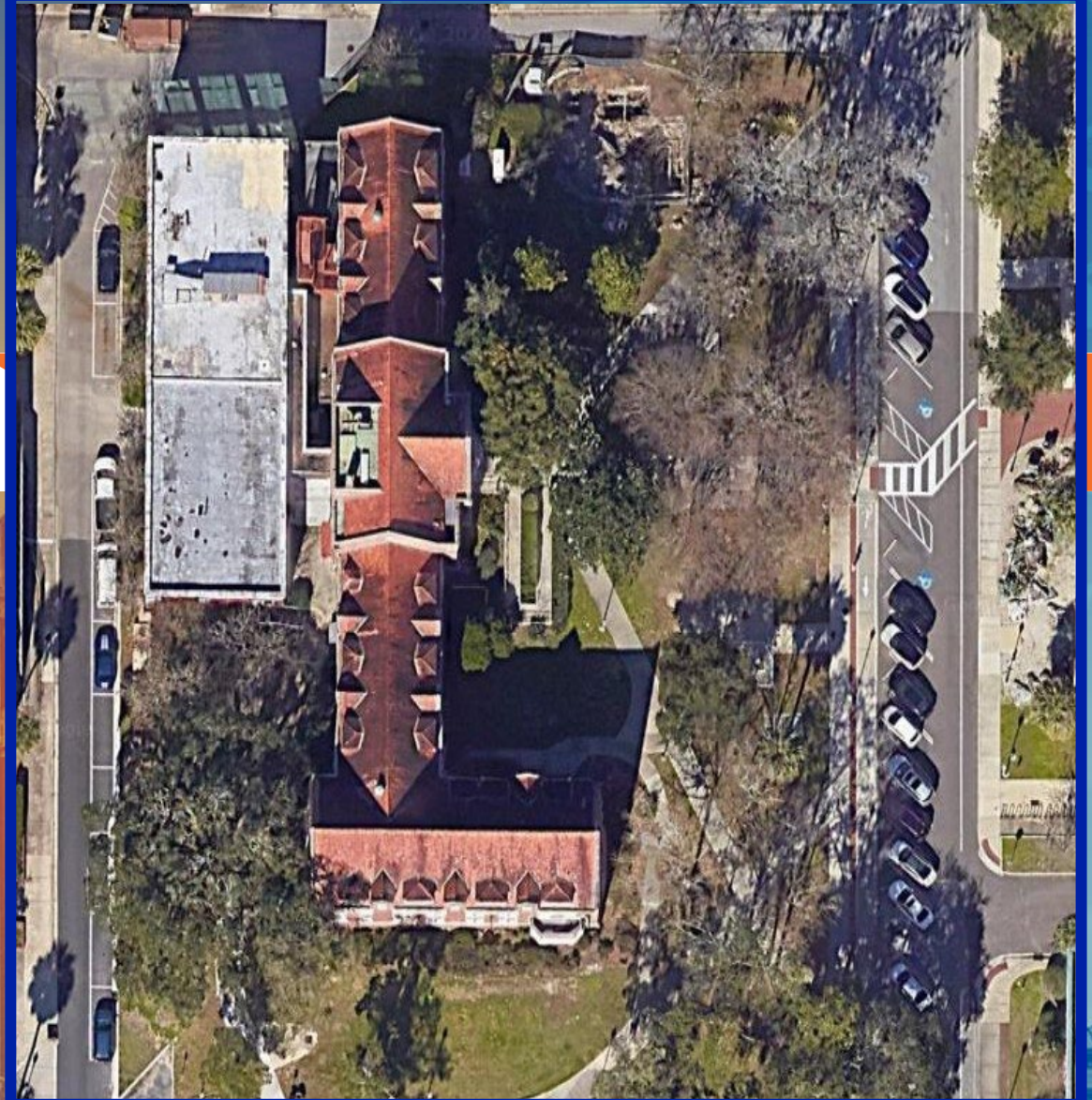




# UF Project 689

## SITE CONDITIONS

- Roadway is being redesigned
- Site Utilities are being redesigned
- ADA will be reworked
- Basement will be exposed in the new design

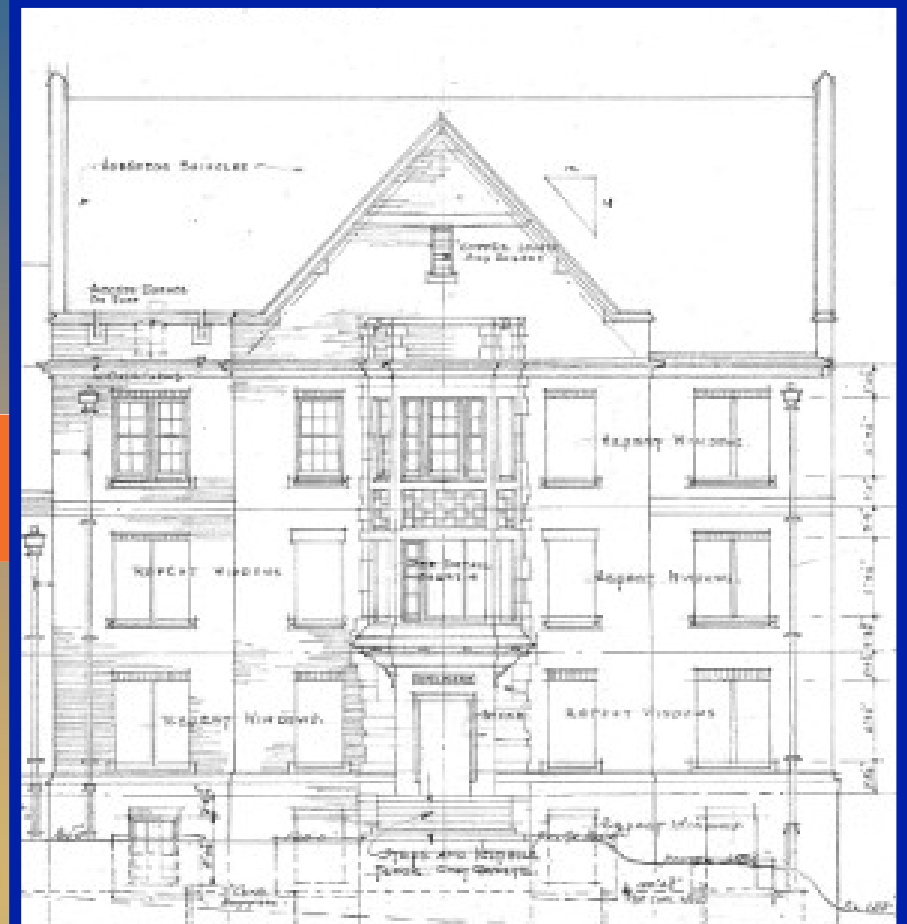




# UF Project 689

## PRELIMINARY CONSIDERATIONS

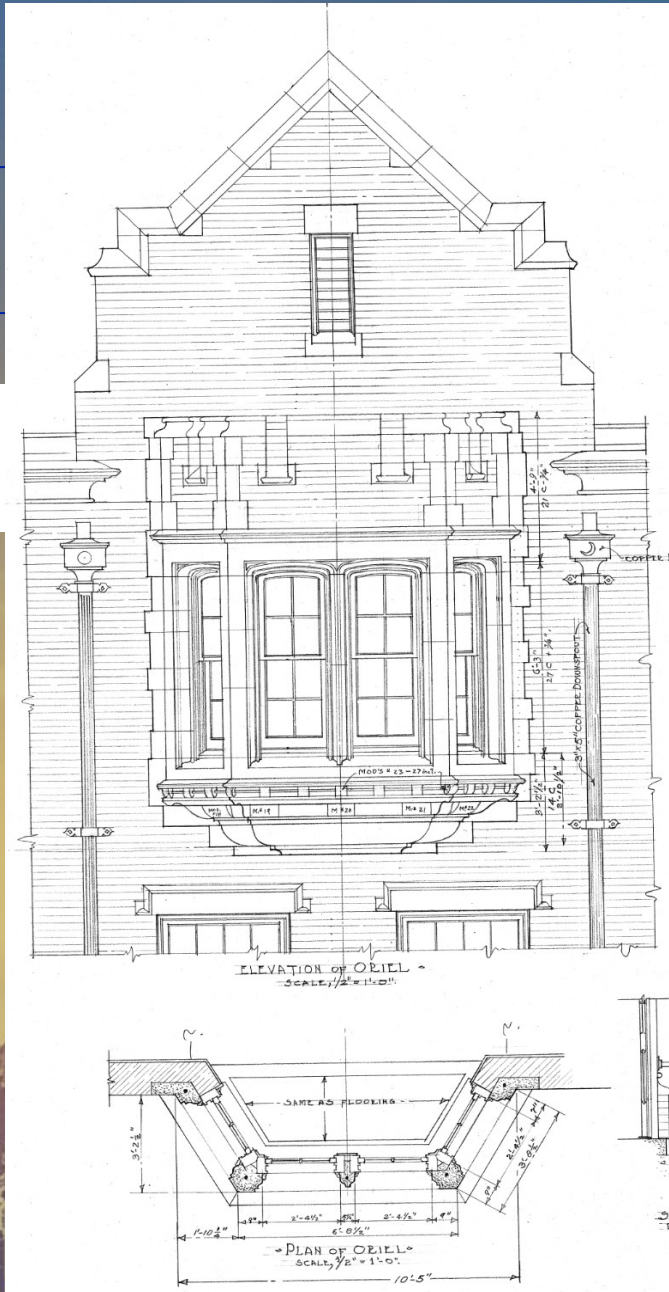
- Maintain the existing design structure
- Replace the roofing and windows
- Update all Building Infrastructure
- Develop an historic corridor with Tigert Hall



UF

# UF Project 689

## Questions







UF

# UF Project 689

**Hamilton Center for Classical and Civic Education**

**Program Review**

Project Manager David W. Wood

**A motion to approve the project as presented**

The background of the slide features a photograph of a university campus. On the left is a large, ornate Gothic-style building with multiple windows and a central spire. To the right is a tall, slender brick tower with a decorative top. The scene is set against a clear sky, with some trees and other campus buildings visible in the distance. The entire image is overlaid with a semi-transparent blue geometric pattern of interconnected lines and dots.