
January 21, 2025 - PHB&S Committee Meeting

ADVANCED SCHEMATIC DESIGN



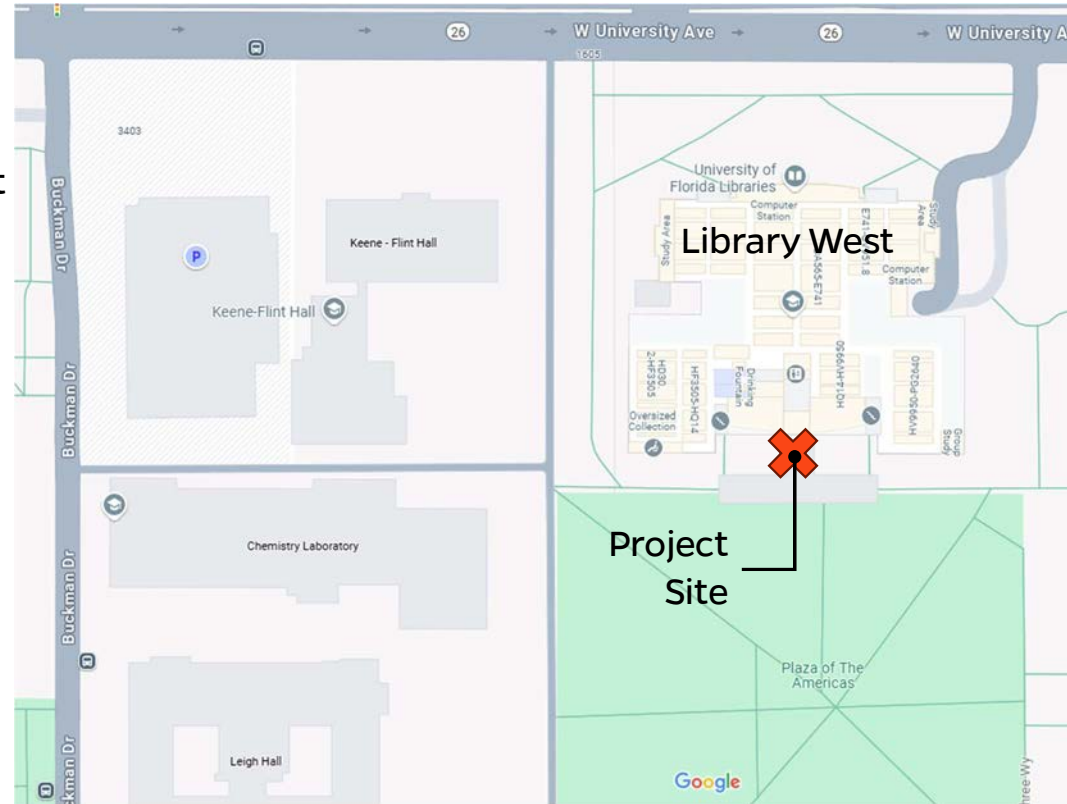
MPO8811 Library West Garden Terrace Renovation

Andrew Meeker, PDC Project Manager

Elisabeth Manley, PLA Kimley-Horn

Project Overview

- Project located at the southern entrance of Library West
- Scope of project is to renovate the 2 garden terrace spaces adjacent to the southern entrance of Library West and relocate an alligator statue that currently resides on the 3rd floor of Library West
- Goal of project is to provide outdoor amenities for the campus community by beautifying under-utilized spaces while responding to the existing context





MPO88II Library West Garden Terrace Renovation

Existing Conditions





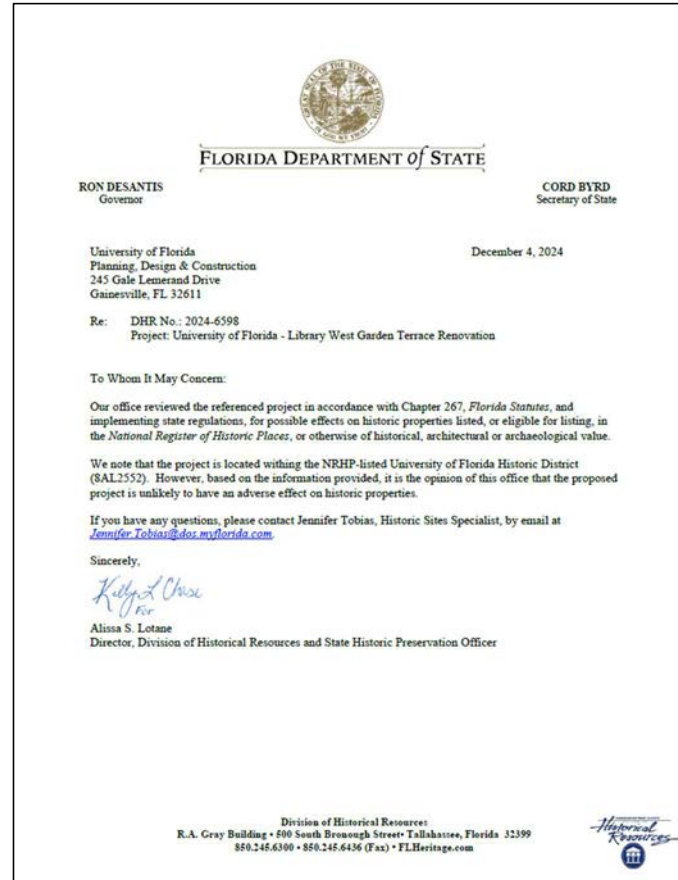
MPO88II Library West Garden Terrace Renovation

Existing Conditions



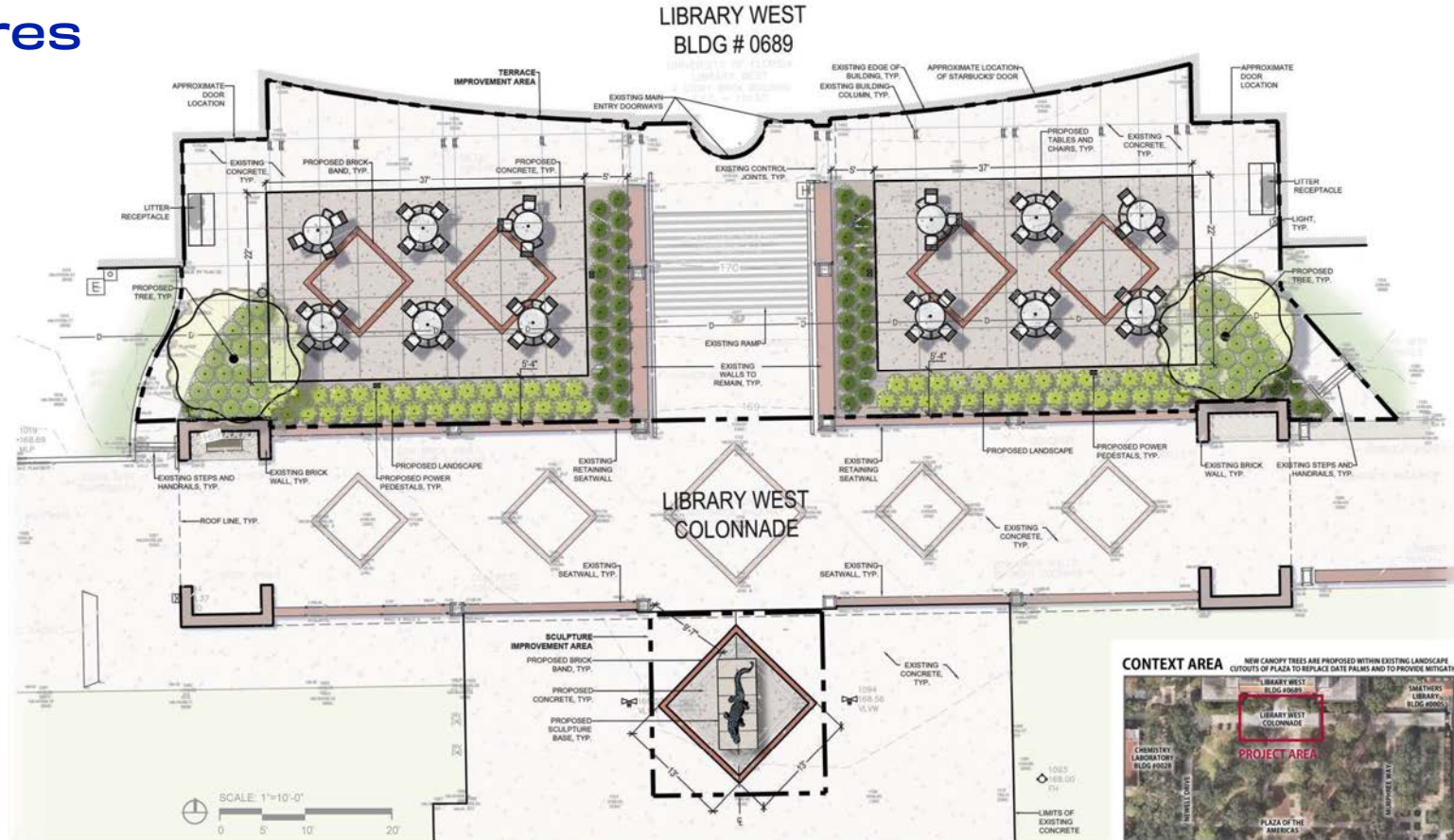
Background

- Library West & Garden Terraces Are **NOT** On National Register Of Historic Places
- Plaza Of The Americas **IS** On National Register Of Historic Places
- FL Division of Historical Resources has reviewed project and stated, “it is the opinion of this office that the proposed project is unlikely to have an adverse effect on historic properties.”
- Approved by LVL Committee on 1/9/25 With Recommendations To Modify Tree Species Selections



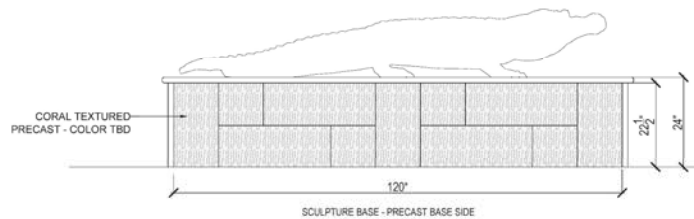
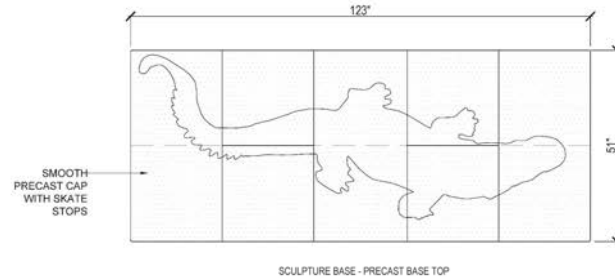
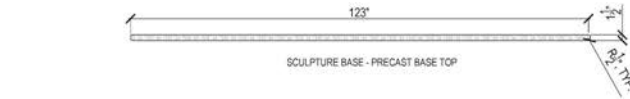
Site Plan Features

- Concrete Paving w/ Brick Accents Matching Existing Conditions
- New ADA Accessible Seating Areas
- Lighting
- Tech Charging Stations
- Landscaping (Native Holly & Pine Trees, Iris, Holly Fern)
- Low Impact Stormwater Infrastructure
- Alligator Statue & Pedestal

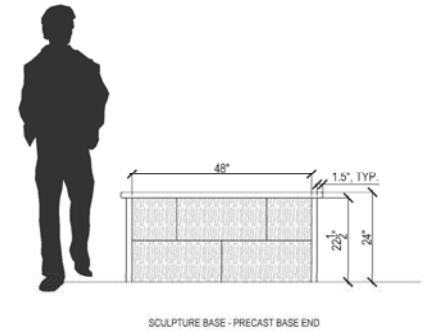


Alligator Statue

- Bronze 2016 “Focused Attention” Alligator Statue Sculpted By David Price
- Precast Concrete Cap w/ Manufactured Limestone Veneer
- Base Materials & Colors To Relate To Existing Materials In Area

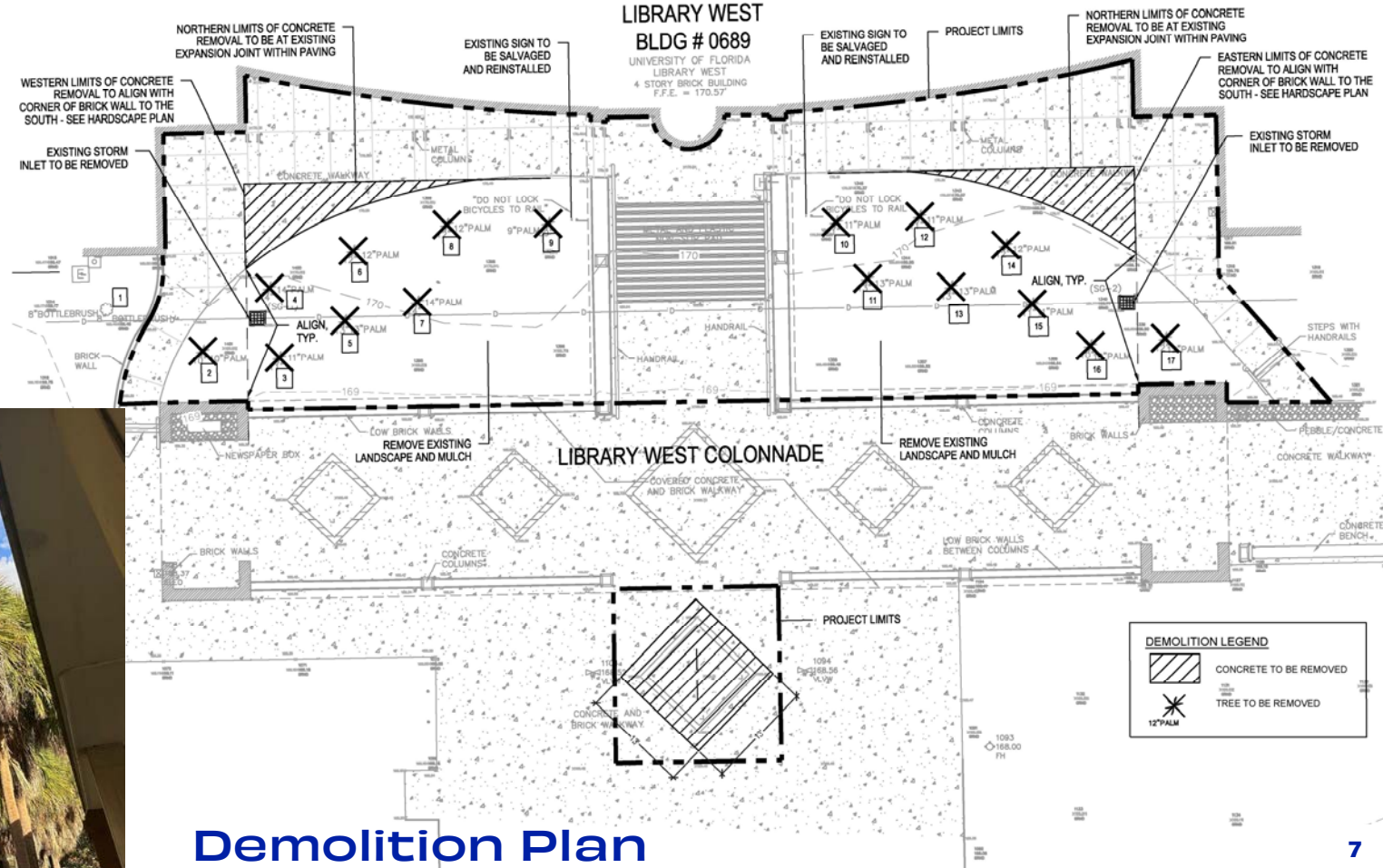


MATERIAL: NATURAL T30, LIGHT AGED AND SEALED, INTEGRAL COLOR TO BE DETERMINED
 MANUFACTURER: SIMULATED KEYSTONE



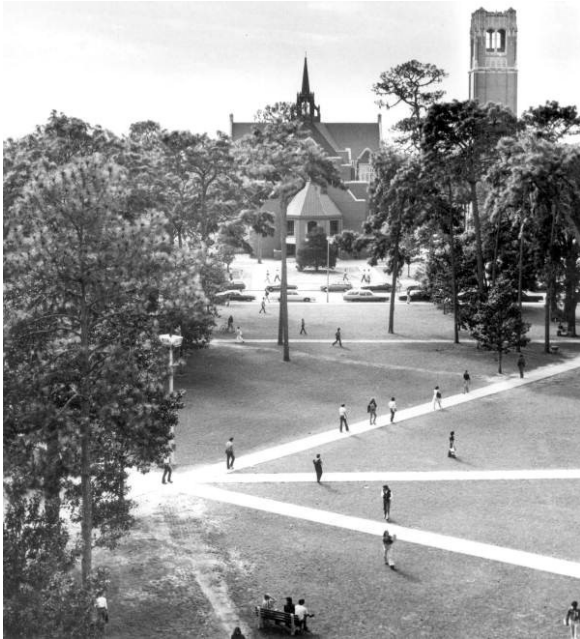
Tree Impacts

- 16 Sabal Palms Proposed To Be Removed
- Palms Not Part Of Historic Landscape, Planted During 2007 Renovation



Tree Mitigation

- LVL Committee Approved Staff Recommendation To Replant 6 Existing Plaza Of The Americas Planters With New Trees



Landscape Master Plan

- Project Located In The S.1 Historic District Precincts
- Furnishing & Finishes To Meet LMP Landscape Design Standards
 - Concrete
 - Brick
 - Precast Concrete
 - Tables & Chairs
 - Trash & Recycling
 - Lighting
 - Tech Charging Stations



BRICK - PATHWAY

Specifications: Wire cut; 4"x 8"x 2 1/4" square edge
Manufacturer: Pine Hall Brick (800) 334-8689 www.pinehallbrick.com
Base: Minimum 6-inches thick concrete slab with 6x6 #10 wire mesh reinforcement on 1" sand setting bed; edge thickness shall be increased to a minimum of 8-inches
Color: Full range
Precinct: 1, S.1, 2



CONCRETE

Material: Refer to the UF Design and Construction Standards
Finish: Floated and troweled with medium broom finish
Color & Pattern: Uncolored
Control Jts: Saw-cut to squared relief. All plans shall indicate control joint locations
Expansion Jts: Shall be in accordance with current ANSI and ASTM standards
Precinct: All precincts



TABLE & CHAIRS

Manufacturer: Landscape Forms (800) 430-6209 www.landscapeforms.com
Style: Mingle; Backed; 5 or 6 seats
Seat Panel: Perforated metal
Table Top: Solid Steelhead, Catena in powdercoat
Color: Black
Precinct: 1, S.1, 2



TRASH AND RECYCLING

Manufacturer: Max-R (877) 646-0663 www.max-r.com/
Style: Terra (Custom)
Material: Max-R Lumber™
Color: Black
Precinct: 1, S.1, 2
 Placed on sidewalks sloped no greater than 2%



CHARGING STATION

Manufacturer: Legrand Landscape Forms (800) 441-1945 www.landscapeforms.com
Style: Power Pedestal
Material: Steel
Color: Black
Precinct: 1, S.1, 2



TRADITIONAL LIGHTPOLE

Manufacturer: Phillips Lumec Lighting (855) 486-2216 www.phillips.com/luminaires
Style: Refractive Post Top (R34-1553V-T)
Luminaire: RL54 Refractive globe; Victorian roof; finial style 'A'
Lamp: LED
Base/Pole: P2560, fluted
Height: 12ft
Color: Black
Precinct: 1, S.1



Request motion to approve the project as presented.

MP08811 LIBRARY WEST GARDEN TERRACE RENOVATION