

Reitz Union Lawn / Inner Road Improvements

Project No. UF-644, UF-644A and UF-644B

LVL Committee Meeting

December 5, 2024

Tom Feather, Project Manager

Project Overview - Location



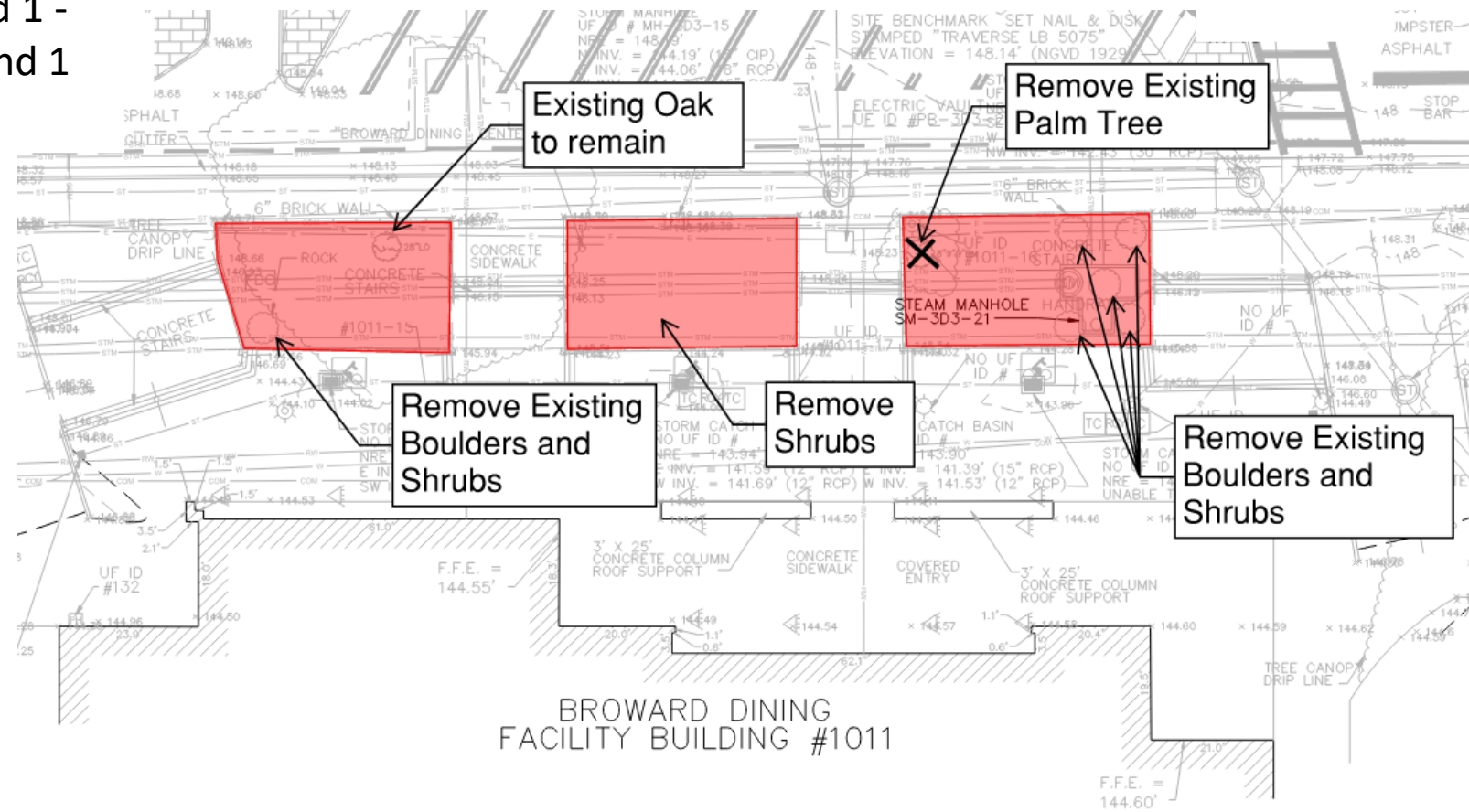
Project Overview – Area of Modification



INNER ROAD LANDSCAPE REVISIONS – 3 EXISTING PLANTERS IN FRONT OF BROWARD DINNING

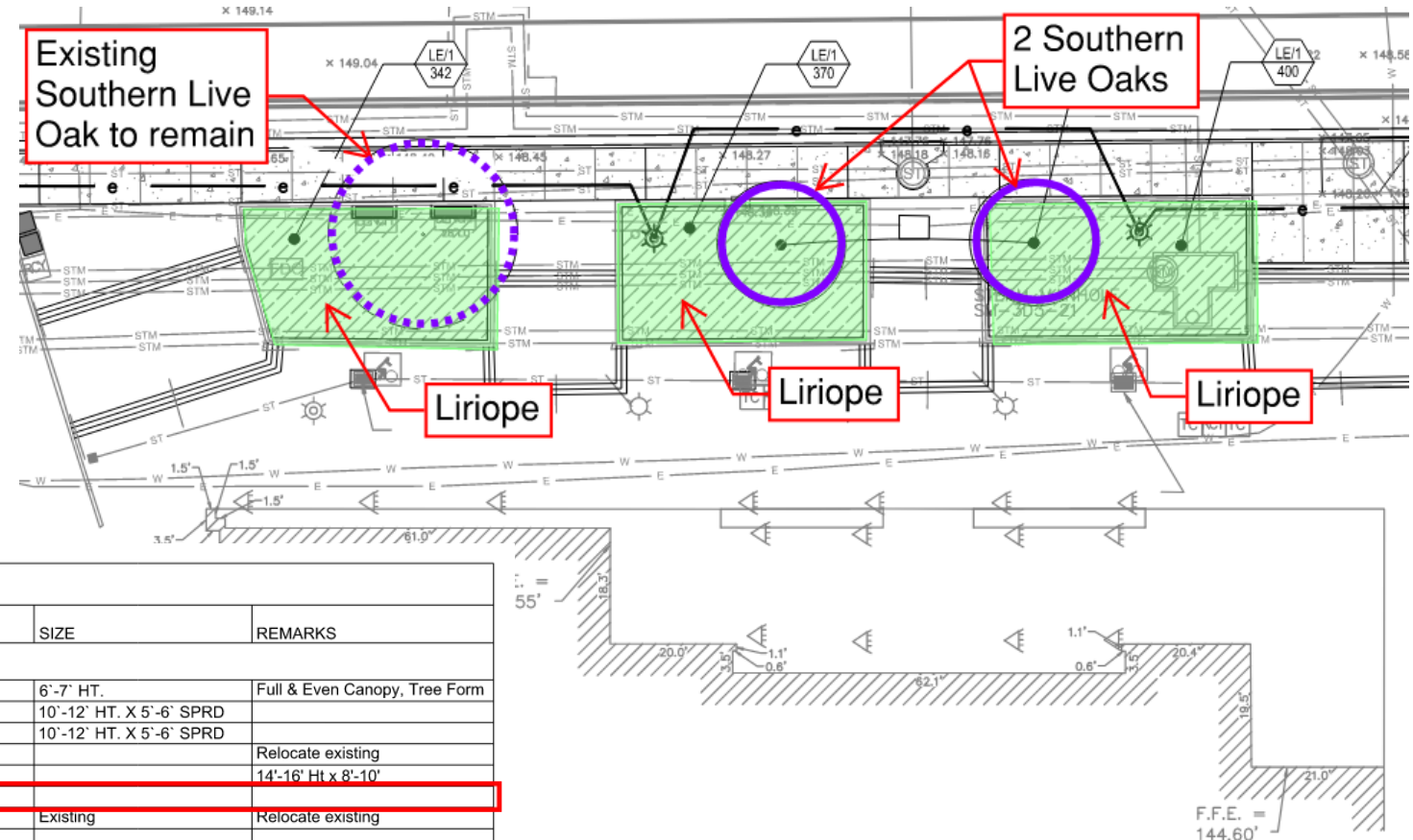
Project Overview – Approved Landscape Plan

Previously approved landscape plan had 1 - 28" Southern Live Oak tree to remain and 1 palm tree, shrubs, and boulders to be removed



Project Overview – Approved Landscape Plan

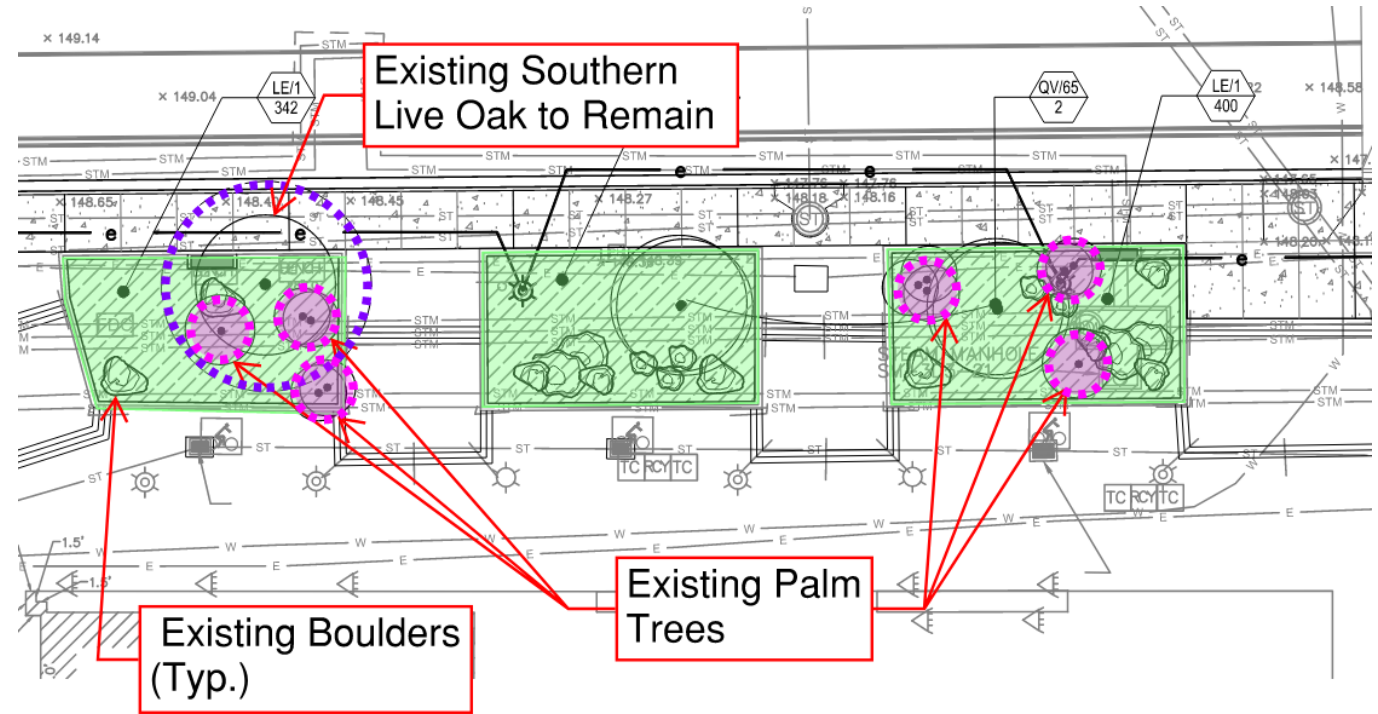
Previously approved landscape plan had 1 - 28" Southern Live Oak tree to remain and 2 Southern Live Oaks with Liriope



PLANT SCHEDULE BASE							
CODE	QTY	BOTANICAL NAME	COMMON NAME	CONT	CAL	SIZE	REMARKS
TREES							
IV	1	Ilex vomitoria 'Pride of Houston'	Yaupon Holly	30 GAL.		6'-7' HT.	Full & Even Canopy, Tree Form
LIM/30	5	Lagerstroemia indica 'Muskogee'	Crape Myrtle Multi-Trunk	30 GAL.	MULTI-TRUNK	10'-12' HT. X 5'-6' SPRD	
LIN/30	2	Lagerstroemia indica 'Natchez'	Crape Myrtle White	30 GAL.	MULTI-TRUNK	10'-12' HT. X 5'-6' SPRD	
PM/EX	1	Phoenix dactylifera 'Medjool'	Date Palm	Existing	--		Relocate existing
QM	2	Quercus michauxii	Swamp Chestnut Oak	65 GAL.			14'-16' Ht x 8'-10'
QV/65	20	Quercus virginiana	Southern Live Oak	65 gal	3.5°Cal		
SP/EX	15	Sabal palmetto	Cabbage Palmetto	Existing	--	Existing	Relocate existing
CODE	QTY	BOTANICAL NAME	COMMON NAME	CONT	SIZE	NATIVE/NON-NATIVE	REMARKS
SHRUBS							
IP/3	30	Illicium floridanum	Florida Anise	3 GAL.	18"-24" OA		Full & Thick
MC/3	44	Muhlenbergia capillaris	Pink Muhly Grass	3 GAL.			Full & Thick
ZP	27	Zamia pumila	Coontie	3 GAL.	18"-24" OA		Full & Thick
SHRUB AREAS							
LE/1	3,360	Liriope muscari 'Emerald Goddess'	Liriope	1 GAL.	10"-14" HT. X 5-7 PPP		Full & Thick, 18" O.C.
TM	73	Trachelospermum asiaticum 'Minima'	Minima Jasmine	1 GAL.	4"-6" HT. X 12"-18" SPRD.		Full & Thick, 18" O.C.
SOD		Zoysia japonica	Zoysia Grass				Contractor to verify amount

Project Overview – Actual Existing Plantings

Actual existing conditions – 3 existing palm trees in the west planter with oak tree and 3 existing palm trees in the east planter



Project Overview – Actual Existing Plantings

Actual existing conditions – 3 existing palm trees in the west planter with oak tress and 3 existing palm trees in the east planter



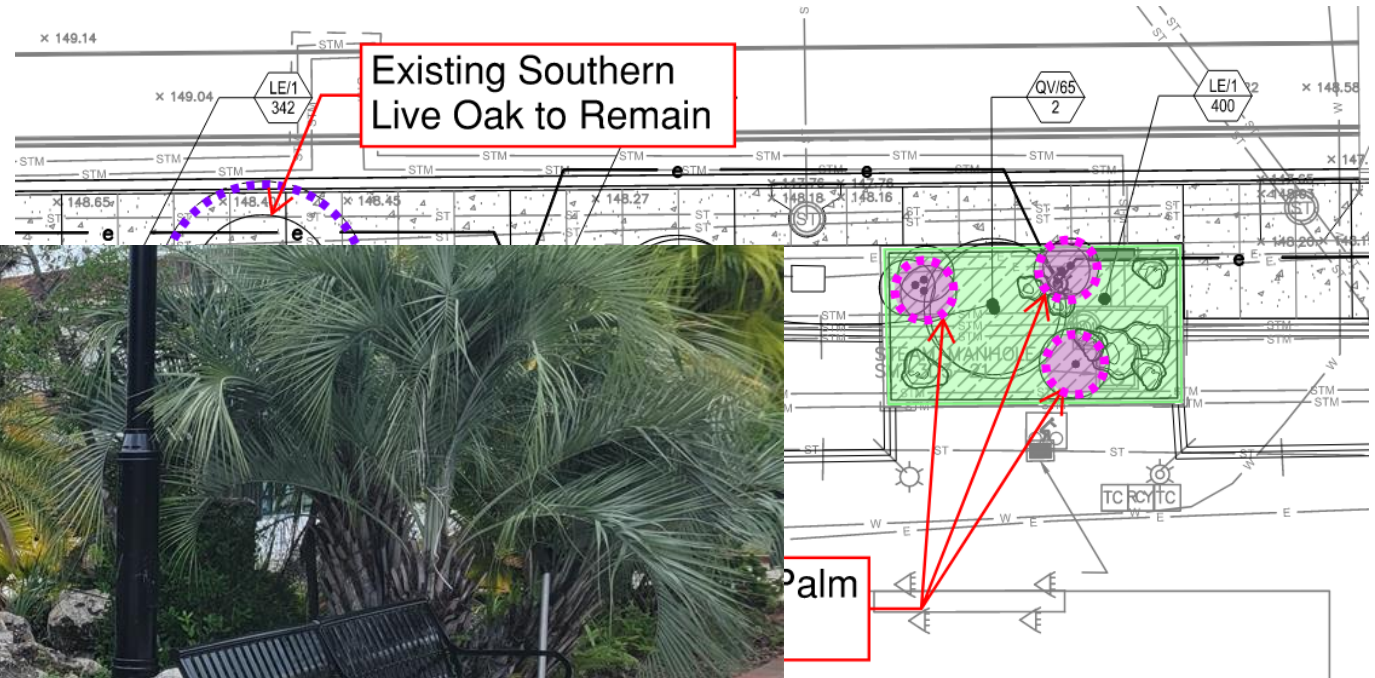
Project Overview – Actual Existing Plantings

Actual existing conditions – 3 existing palm trees in the west planter with oak tress and 3 existing palm trees in the east planter



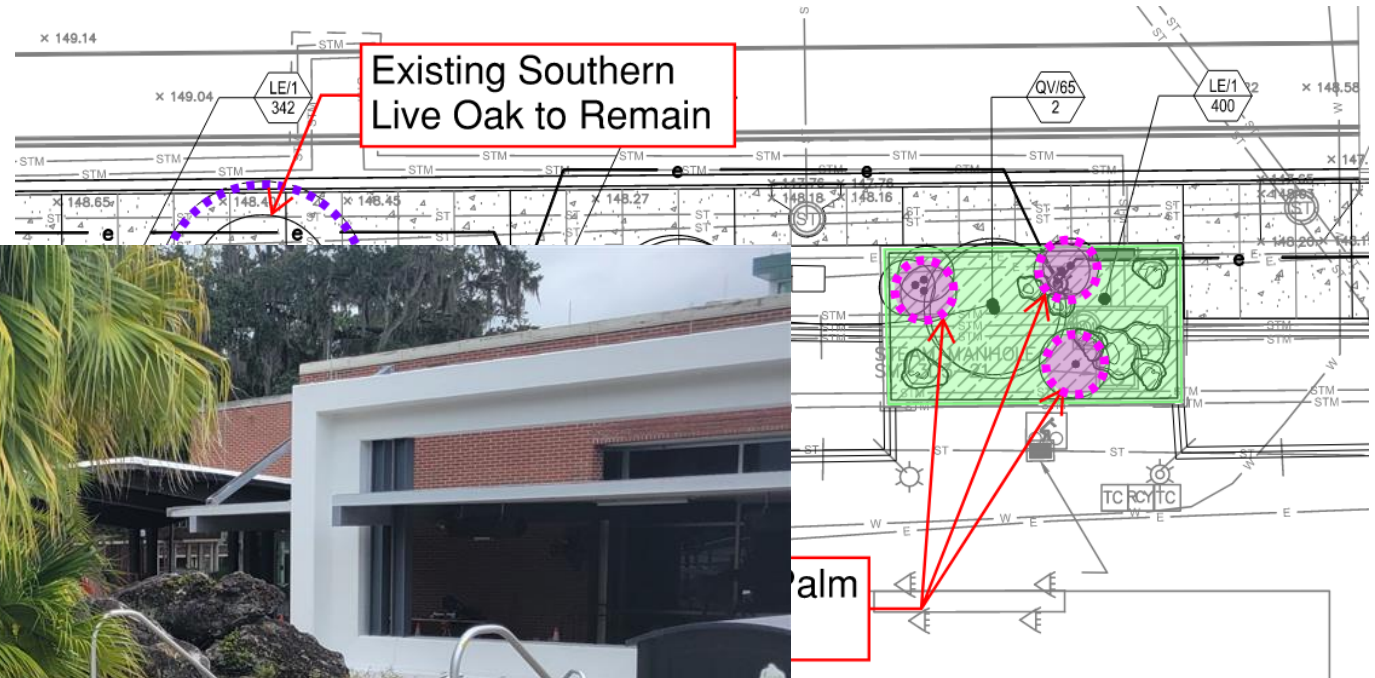
Project Overview – Actual Existing Plantings

Actual existing conditions – 3 existing palm trees in the west planter with oak tree and 3 existing palm trees in the east planter



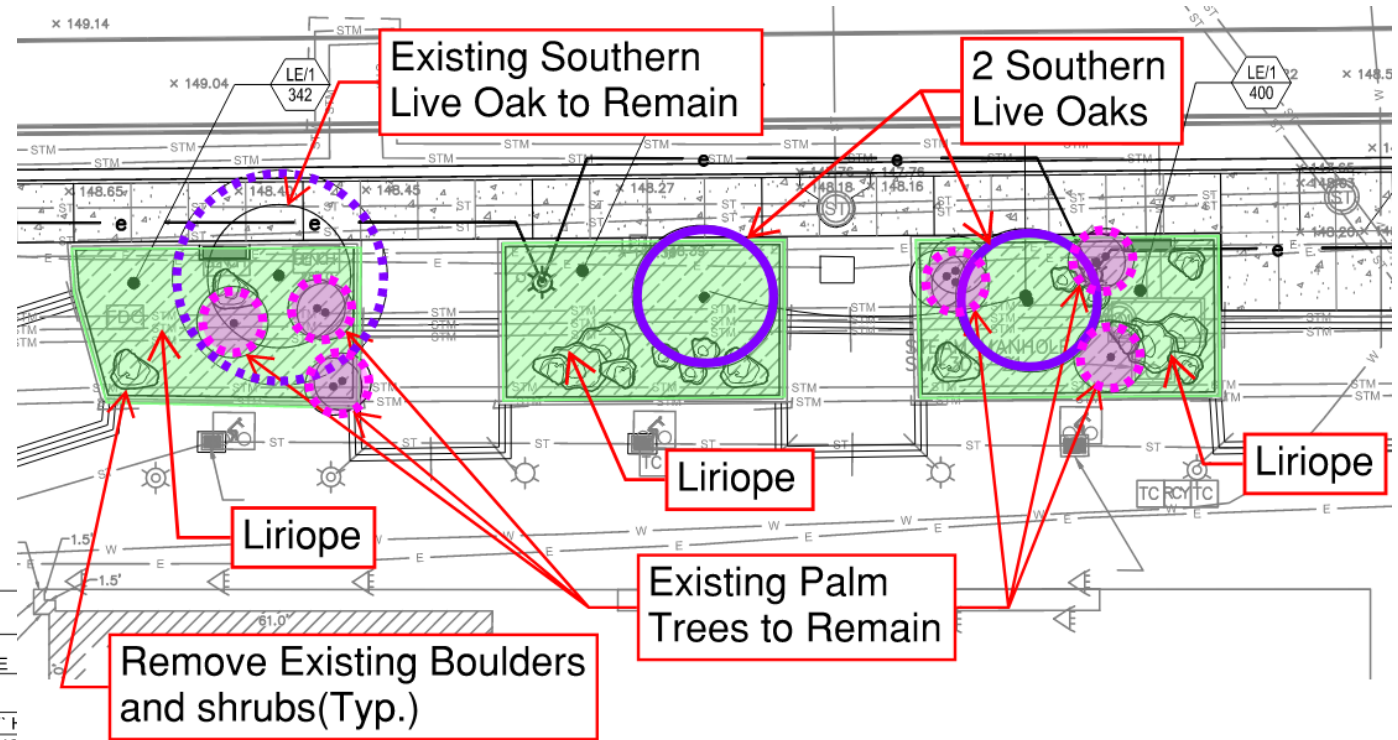
Project Overview – Actual Existing Plantings

Actual existing conditions – 3 existing palm trees in the west planter with oak tree and 3 existing palm trees in the east planter



Project Overview – Proposed Landscape Plan

Proposed landscape plan: 1 - 28" Southern Live Oak tree with the 3 existing palm trees in the west planter and 3 existing palm trees in the east planter to remain and 2 new Southern Live Oaks with Liriope



PLANT SCHEDULE BASE

CODE	QTY	BOTANICAL NAME	COMMON NAME	CONT	CAL	SIZE		
TREES								
IV	1	<i>Ilex vomitoria</i> 'Pride of Houston'	Yaupon Holly	30 GAL.		6'-7' t		
LIM/30	5	<i>Lagerstroemia indica</i> 'Muskogee'	Crape Myrtle Multi-Trunk	30 GAL.	MULTI-TRUNK	10'-12		
LIN/30	2	<i>Lagerstroemia indica</i> 'Natchez'	Crape Myrtle White	30 GAL.	MULTI-TRUNK	10'-12		
PM/EX	1	<i>Phoenix dactylifera</i> 'Medjool'	Date Palm	Existing	--			Relocate existing
QM	2	<i>Quercus michauxii</i>	Swamp Chestnut Oak	65 GAL.				14'-16' Ht x 8'-10'
QV/65	20	<i>Quercus virginiana</i>	Southern Live Oak	65 gal	3.5"Cal			
SP/EX	15	<i>Sabal palmetto</i>	Cabbage Palmetto	Existing	--	Existing		Relocate existing
CODE	QTY	BOTANICAL NAME	COMMON NAME	CONT	SIZE	NATIVE/NON-NATIVE	REMARKS	
SHRUBS								
IP/3	30	<i>Illicium floridanum</i>	Florida Anise	3 GAL.	18"-24" OA			Full & Thick
MC/3	44	<i>Muhlenbergia capillaris</i>	Pink Muhly Grass	3 GAL.				Full & Thick
ZP	27	<i>Zamia pumila</i>	Coontie	3 GAL.	18"-24" OA			Full & Thick
SHRUB AREAS								
LE/1	3,360	<i>Liriope muscari</i> 'Emerald Goddess'	Liriope	1 GAL.	10"-14" HT. X 5-7 PPP			Full & Thick, 18" O.C.
TM	73	<i>Trachelospermum asiaticum</i> 'Minima'	Minima Jasmine	1 GAL.	4"-6" HT. X 12"-18" SPRD.			Full & Thick, 18" O.C.
SOD		<i>Zoysia japonica</i>	Zoysia Grass					Contractor to verify amount

Draft desired motion to be made by the committee:

“Motion to approve the revised landscape plan for Inner Road.”



December 2024



W.W. Glenn Teaching Building

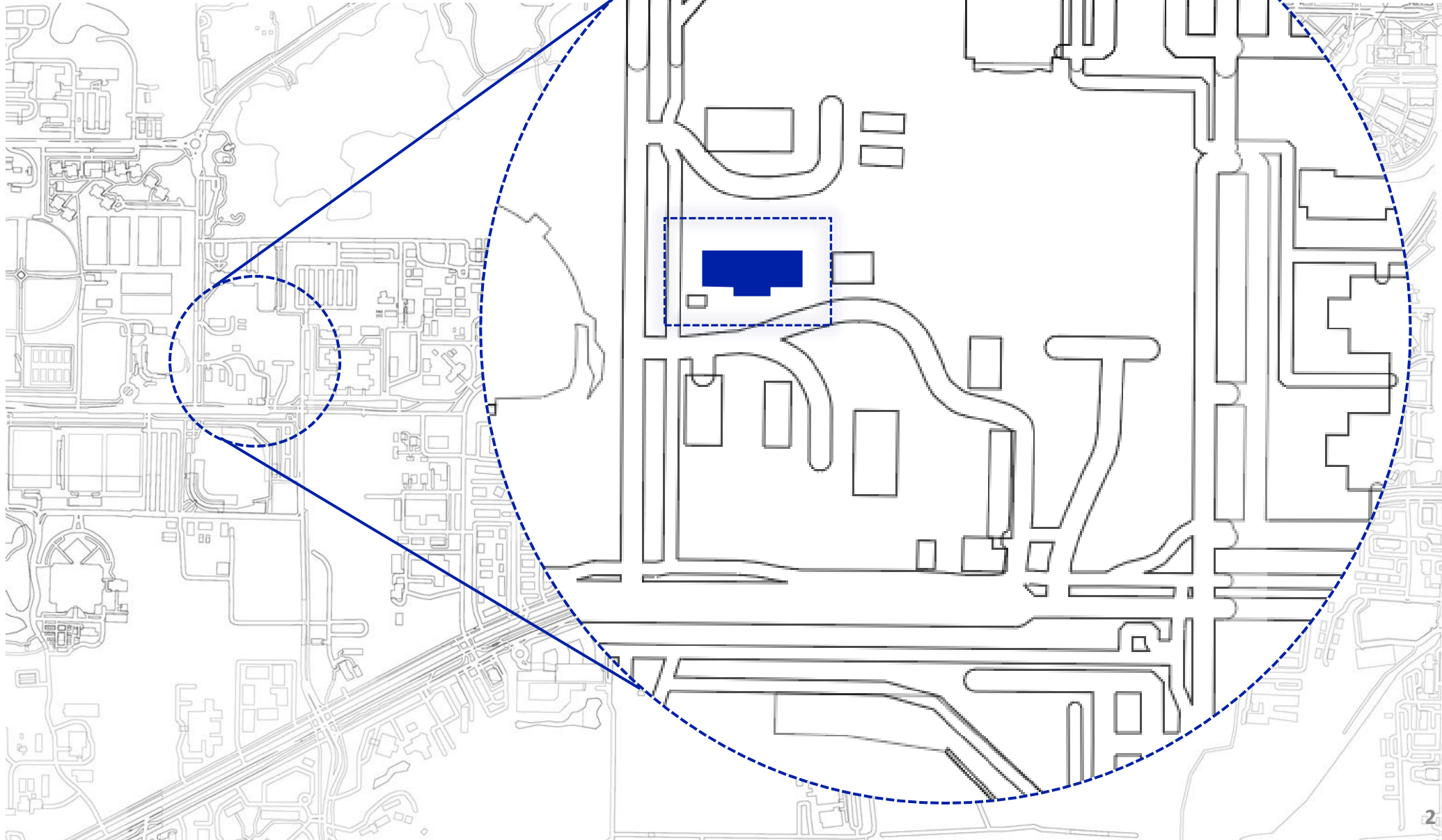
IF24049

Sean Mountain, Assoc. Director IFAS Facilities Planning & Operations

W.W. Glenn Teaching Building IF24049

Project Overview

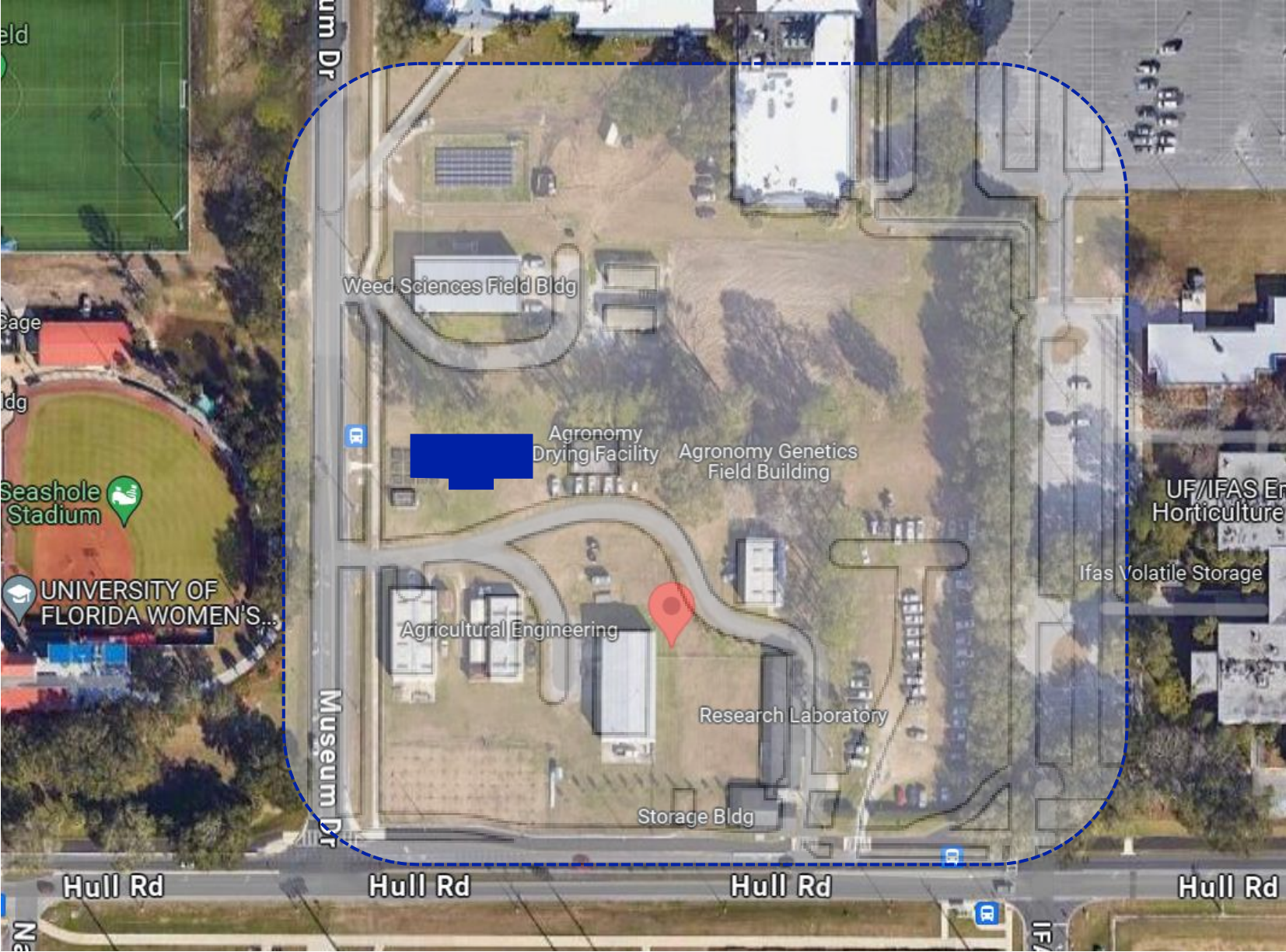
- This project was presented and approved at LVL during the programming stage in January 2024
- The building is located north of the intersection of Hull Road and Museum Road



W.W. Glenn Teaching Building IF24049

Tree Impacts

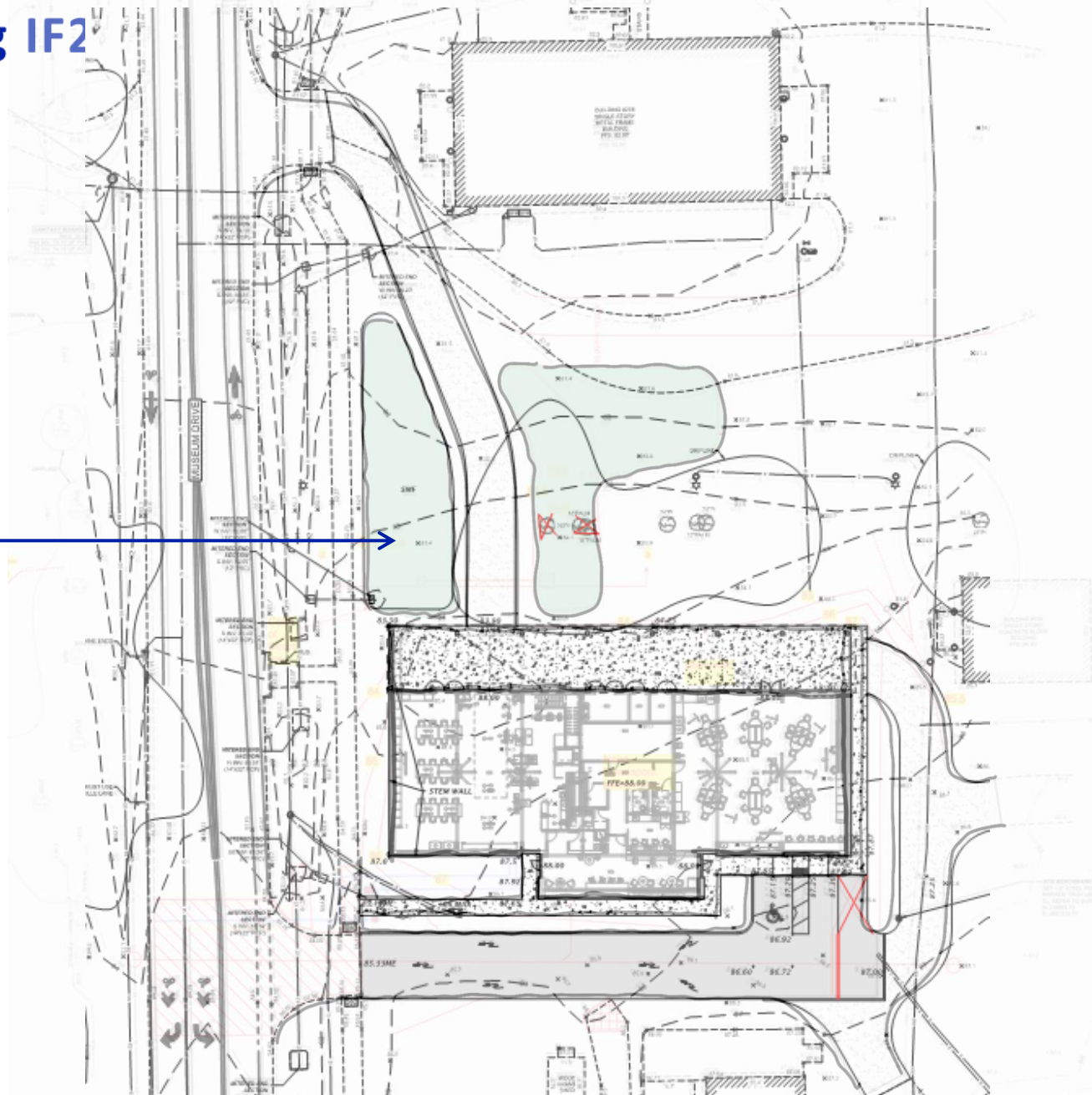
- The project will require onsite stormwater management
- Three non-heritage existing trees will be impacted and require removal:
 - 26" Loblolly Pine
 - 18" Sabal Palm
 - 18" Loblolly Pine



Tree Impacts

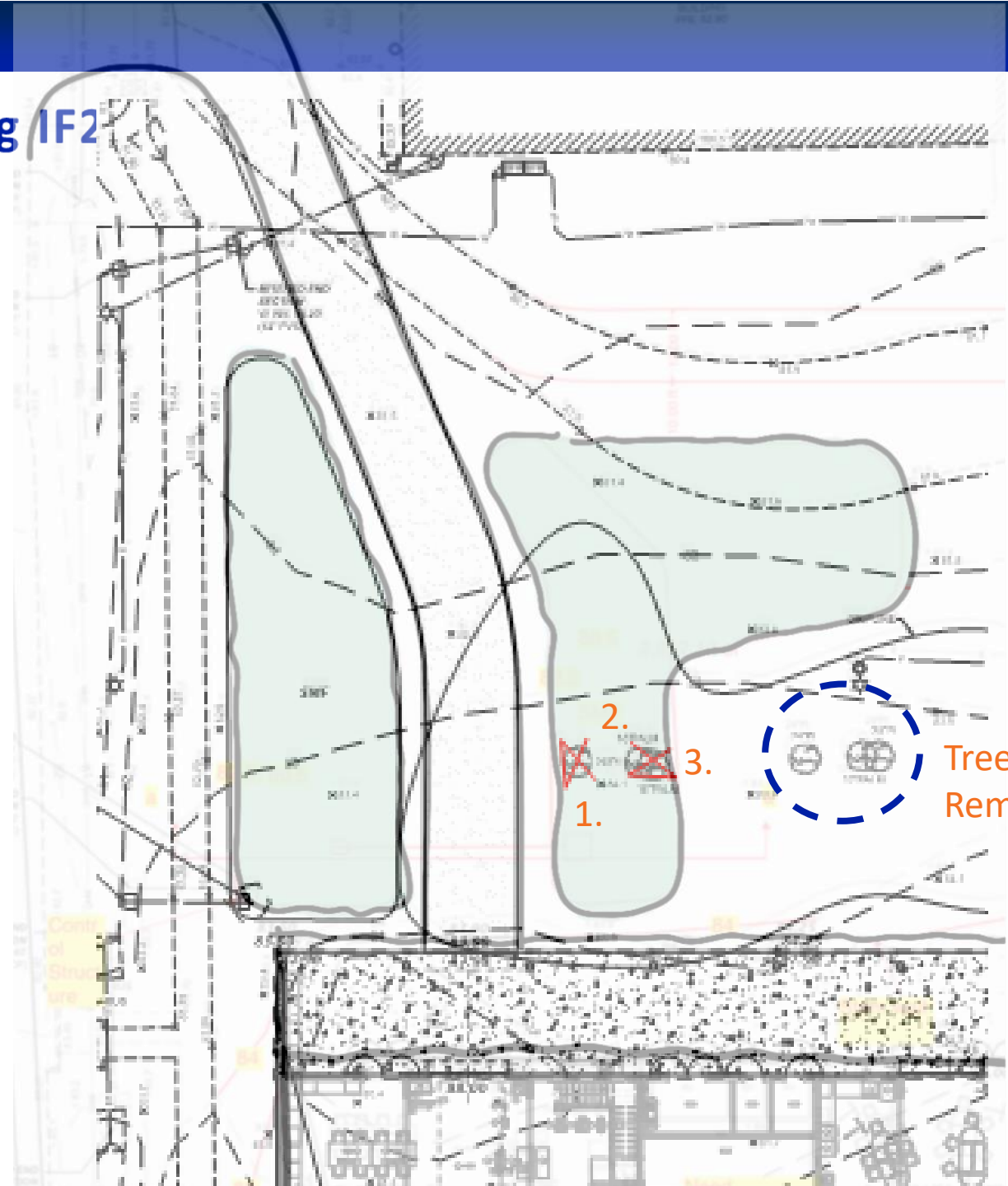
- The project will require onsite stormwater management
- Three non-heritage existing trees will be impacted and require removal:
 - 26" Loblolly Pine
 - 18" Sabal Palm
 - 18" Loblolly Pine

Stormwater Management Areas



Tree Impacts

- 1. 26" Loblolly Pine
- 2. 18" Sabal Palm
- 3. 18" Loblolly Pine



Tree Impacts

1. 26" Loblolly Pine
2. 18" Sabal Palm
3. 18" Loblolly Pine





W.W. Glenn Teaching Building IF24049

Tree Impact Summary

TREE #	SPECIES	DBH	CONDITION
1	Loblolly Pine	26"	Fair
2	Sabal Palm	18"	Fair
3	Loblolly Pine	18"	Fair

NUMBER OF TREES REMOVED	3	NUMBER OF TREES PLANTED ON SITE	TBD
NUMBER OF HERITAGE TREES REMOVED	0	NUMBER OF TREES REQUIRING MITIGATION	6
<u>MITIGATION FEE</u>		Trees anticipated to be planted onsite	

Landscape Plan

- CHW/NV5 will be working with IFAS on the design of the stormwater management facilities.
- Native trees, shrubs, and groundcovers will be used.
- It is anticipated that all mitigation trees will be provided onsite.





A motion to approve the project as presented.

**W.W. GLENN TEACHING BUILDING
IF24049**

The logo for the University of Florida, consisting of the letters 'UF' in white on an orange square background.

UF

Nuclear Field Building Renovation

MP-07381

Construction
05 December 2025

Stephen Caron, Project Manager



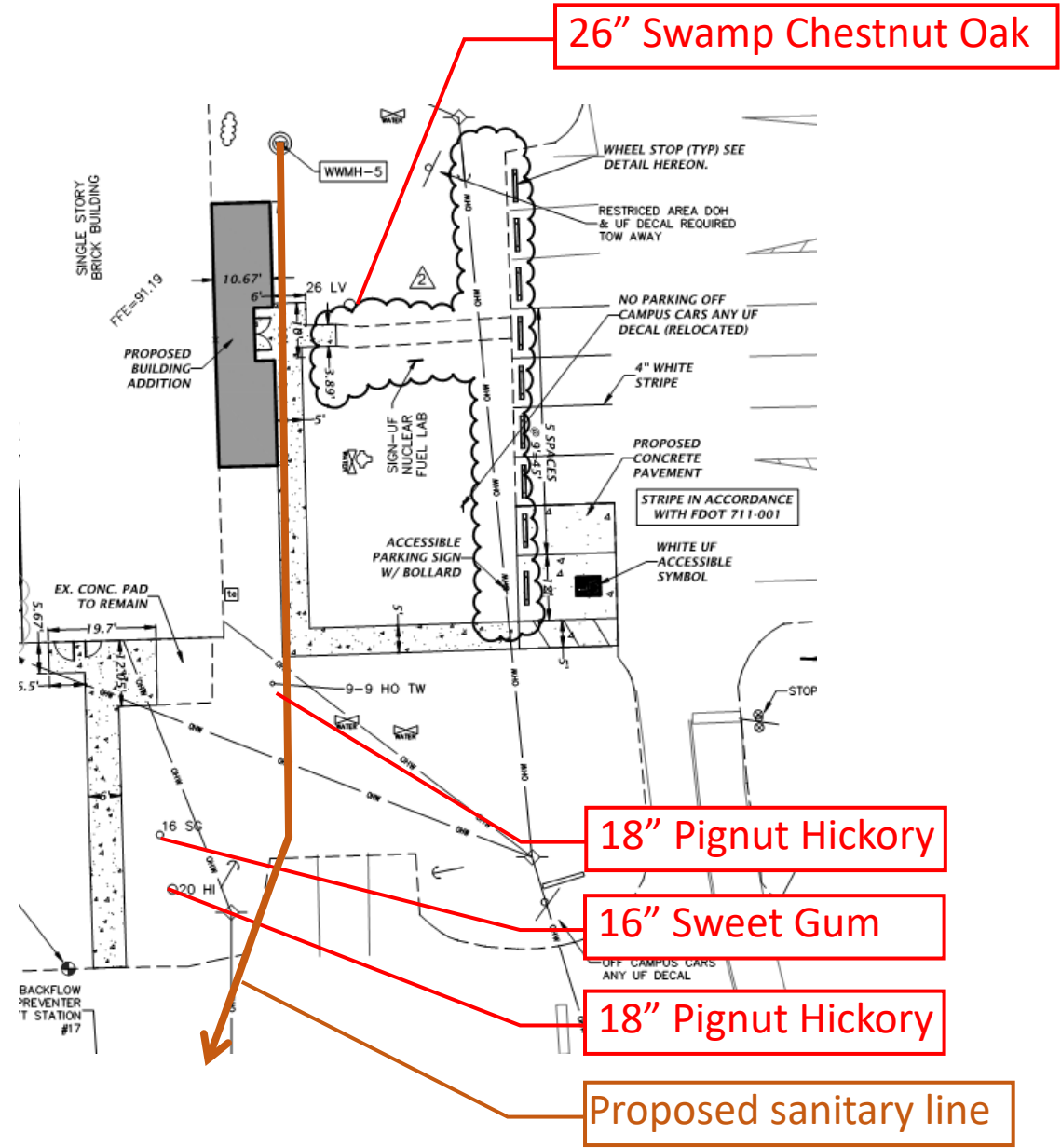
Project Overview

- The Nuclear Field Building (0554; c. 1960) is located in the surge area of campus:
2230 Surge Area Dr., Gainesville FL 32611
- The building will be renovated to house Environmental Health & Safety
- 6,890 GSF
(6,402 GSF Existing; 488 GSF Addition)
- The existing building and site are being vacated by the College of Engineering and building will be adapted for reuse as an office building. Further, a series of projects will help to rehabilitate the site and improve drainage of the surge area.
- Project is currently under construction.



Construction Site Conditions

- Sanitary sewer on provided survey did not match field conditions
- Additional sanitary sewer work will require additional site trenching that will impact 3 additional trees onsite:
 - 26" Swamp Chestnut Oak
 - 16" Sweet Gum
 - 18" Pignut Hickory
 - 9", 9" American Holly



Construction Site Conditions



Required trenching

Required trenching

Construction Site Conditions

Species	DBH	Health	Proposed Mitigation
Swamp Chestnut Oak	26"	FAIR	\$1,000 (4:1)
Pignut Hickory	18"	POOR	\$500 (2:1)
Sweet Gum	16"	FAIR	\$500 (2:1)
American Holly	9", 9"	FAIR	\$500 (2:1)





Requested motion:

“A motion to approve removal of trees and mitigation payment as presented.”



Updated as presented 12/5/24

December 2024



MP09130, MP09139, + MP09143 Maguire and University Apartments

Alex Gauthier + Stephen Caron

Maguire and University Apartments

Project Overview

- Project is located at the former Maguire Village between SW 34th Street, Radio Road, Bledsoe Drive, and Hull Road.
- Current scope of work includes the demolition of existing buildings on the project site.
- Buildings are currently unoccupied

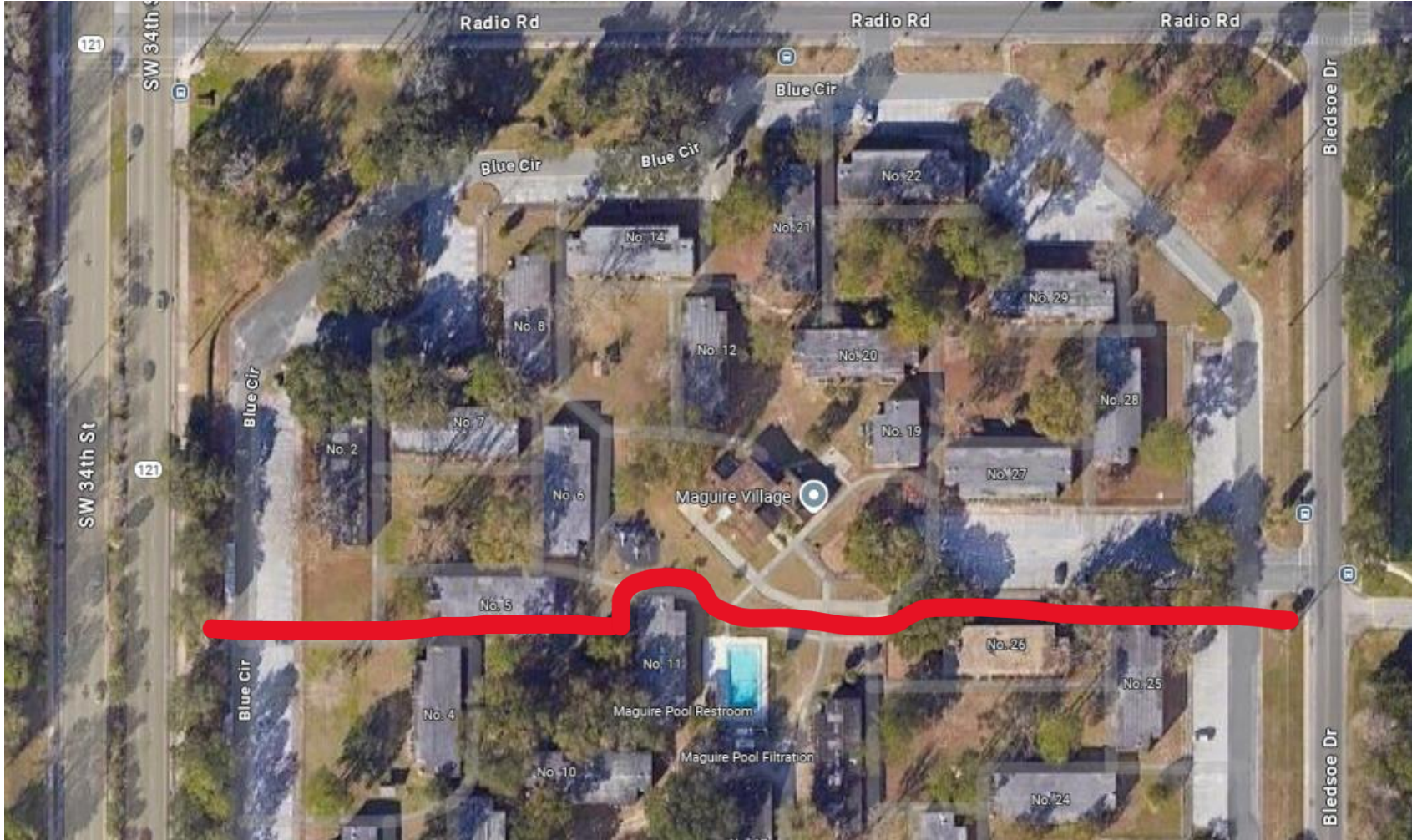




MP09130, MP09139, + MP09143

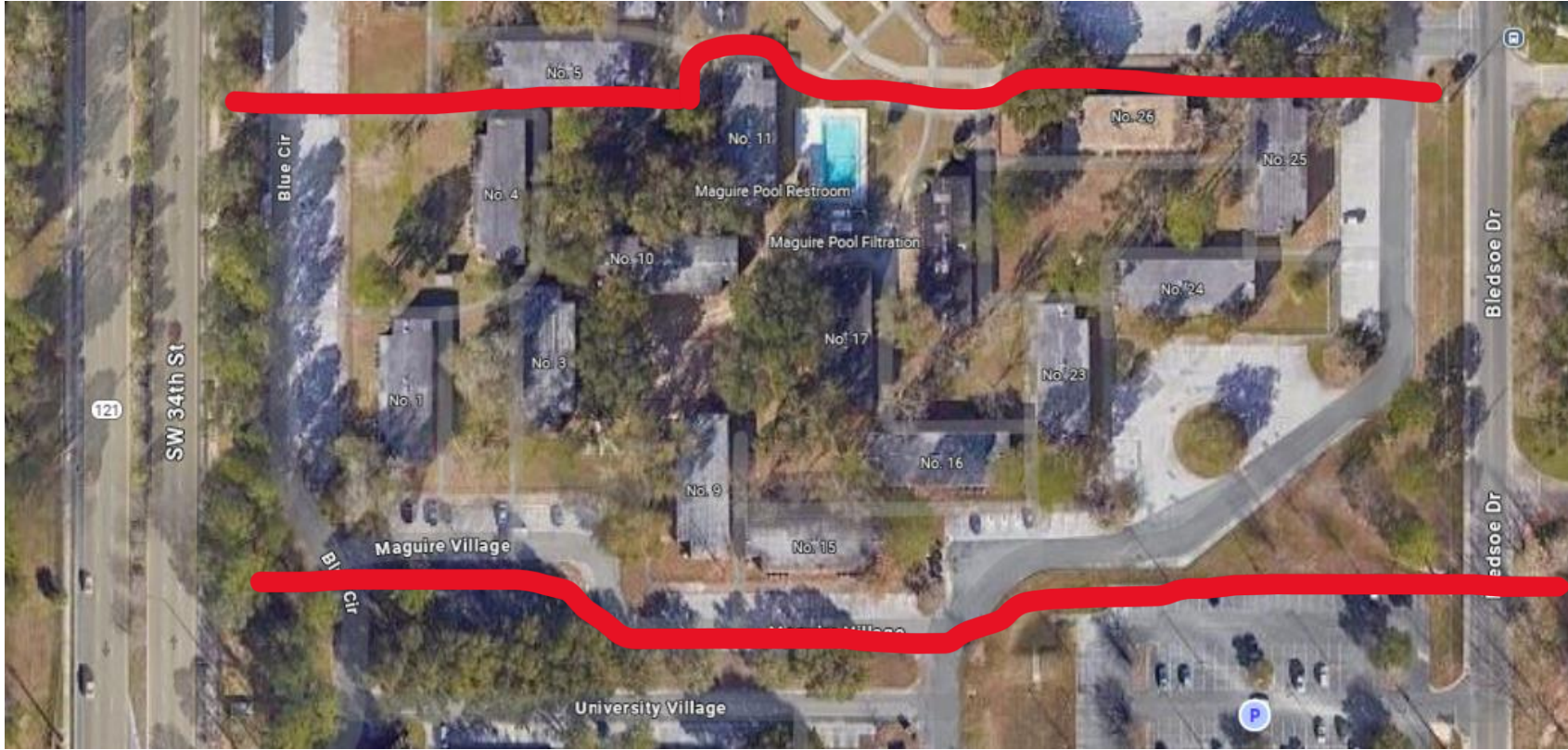
Maguire and University Apartments

MP09139



Maguire and University Apartments

MP09143

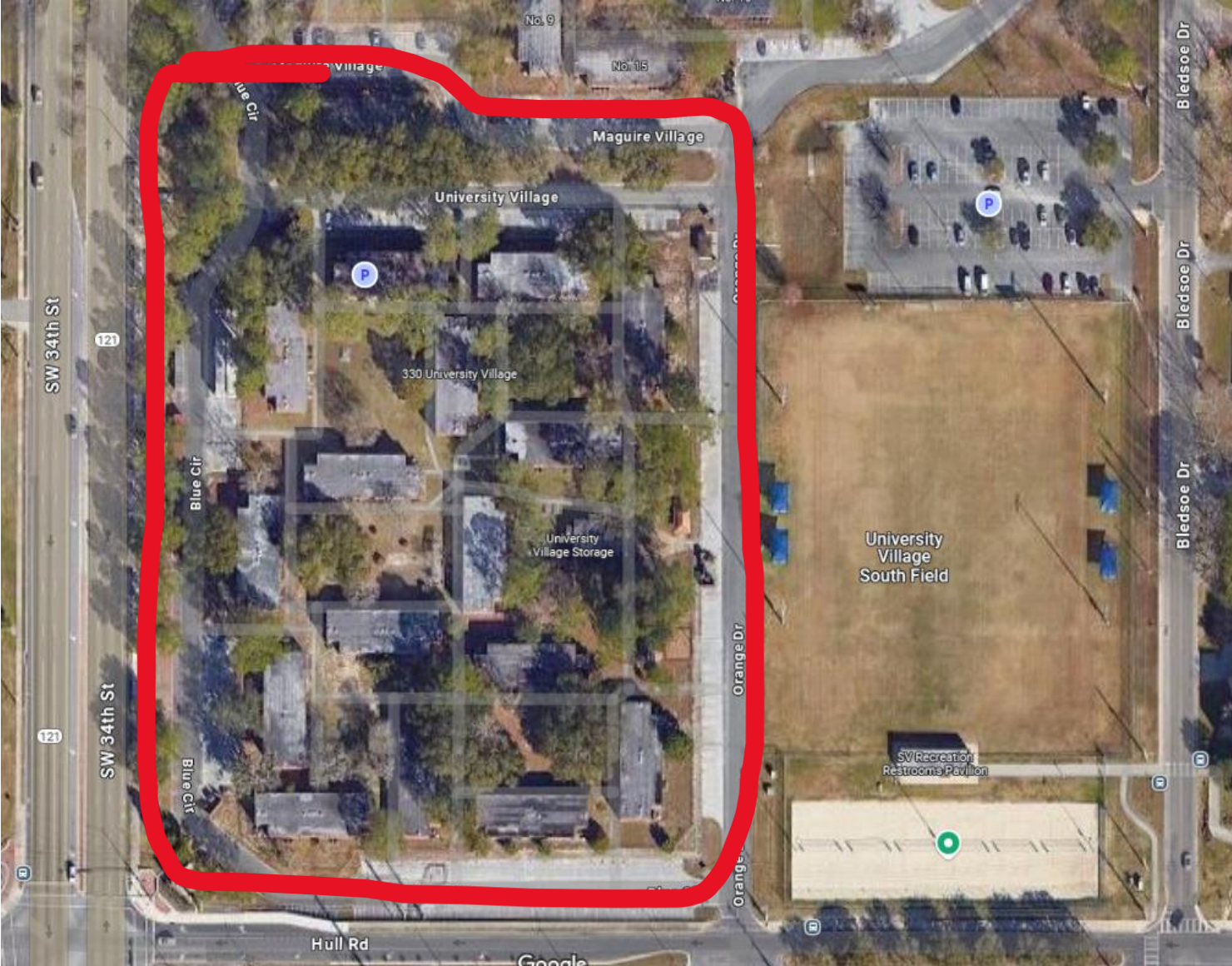




MP09130, MP09139, + MP09143

Maguire and University Apartments

MP09130



Site Conditions

- The site has been unoccupied for some time with many trees that were either planted or have volunteered since the site was developed
- There are a mix of pine species, oak species, palms, and other hardwood species located across the project sites
- For the purposes of this presentation, all trees were located, identified and measured
- There are approximately 330 trees onsite, approximately 82 of which are of heritage size



Site Conditions

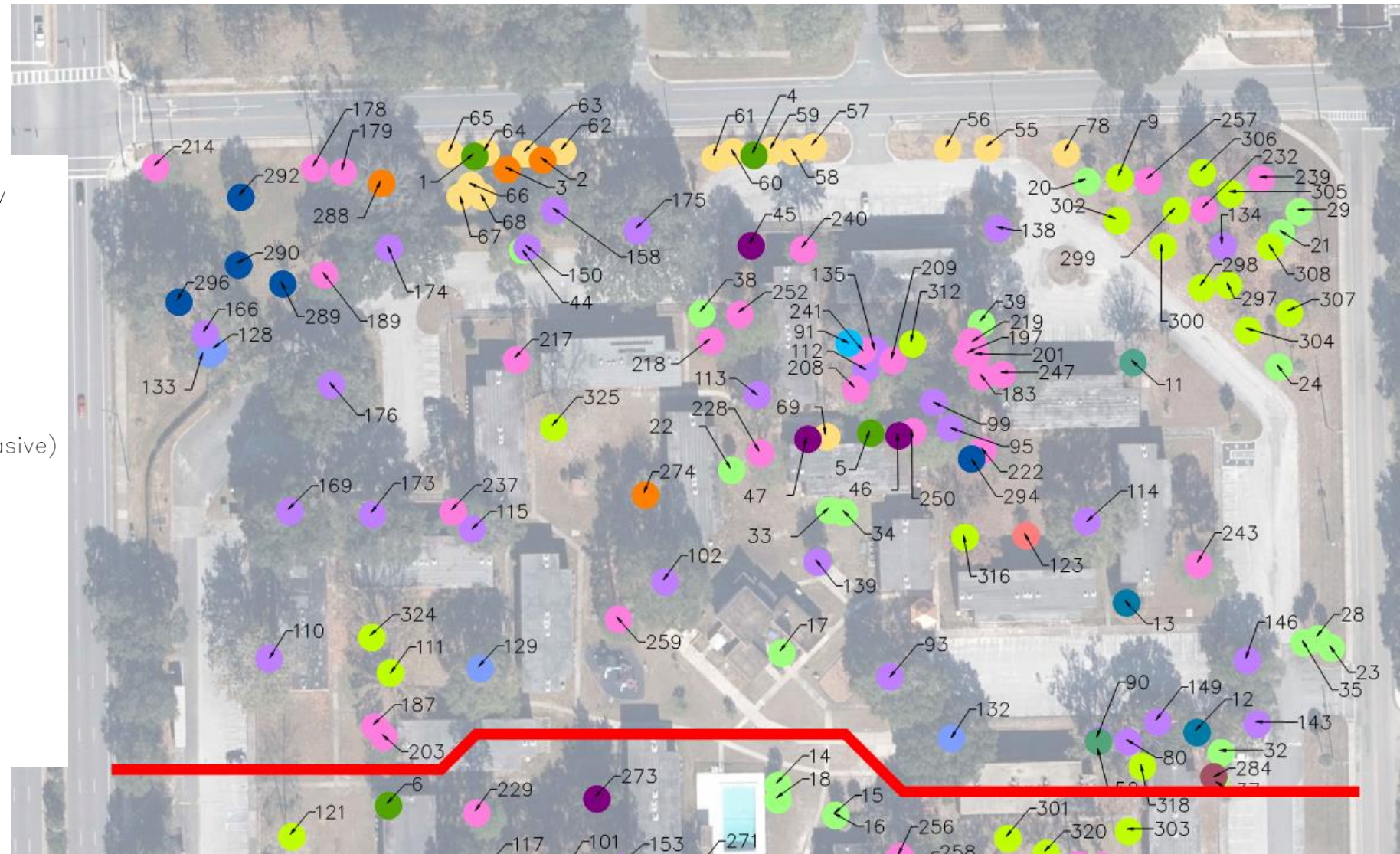
- The buildings onsite are slated for demolition
- Trees onsite are not anticipated for removal, however, as part of the review of trees onsite, we have made recommendations on trees to be removed due to their condition and/or proximity to buildings scheduled for removal
- Any future building projects that could impact trees would be brought back to this committee



Maguire and University Apartments

MP09139

- | | |
|--------------------|--------------------|
| Loblolly Pine | American Holly |
| Magnolia | Black Cherry |
| Red Cedar | Bluff Oak |
| Red Maple | Bradford Pear |
| Short leaf Pine | Cabbage Palm |
| Shumard Oak | Camphor (Invasive) |
| Soap Berry | Cherry Laurel |
| Swamp Chestnut Oak | Chinese Elm |
| Sweet Gum | Crape Myrtle |
| Sycamore | Jelly Palm |
| Water Oak | Laurel Oak |
| Live Oak | |

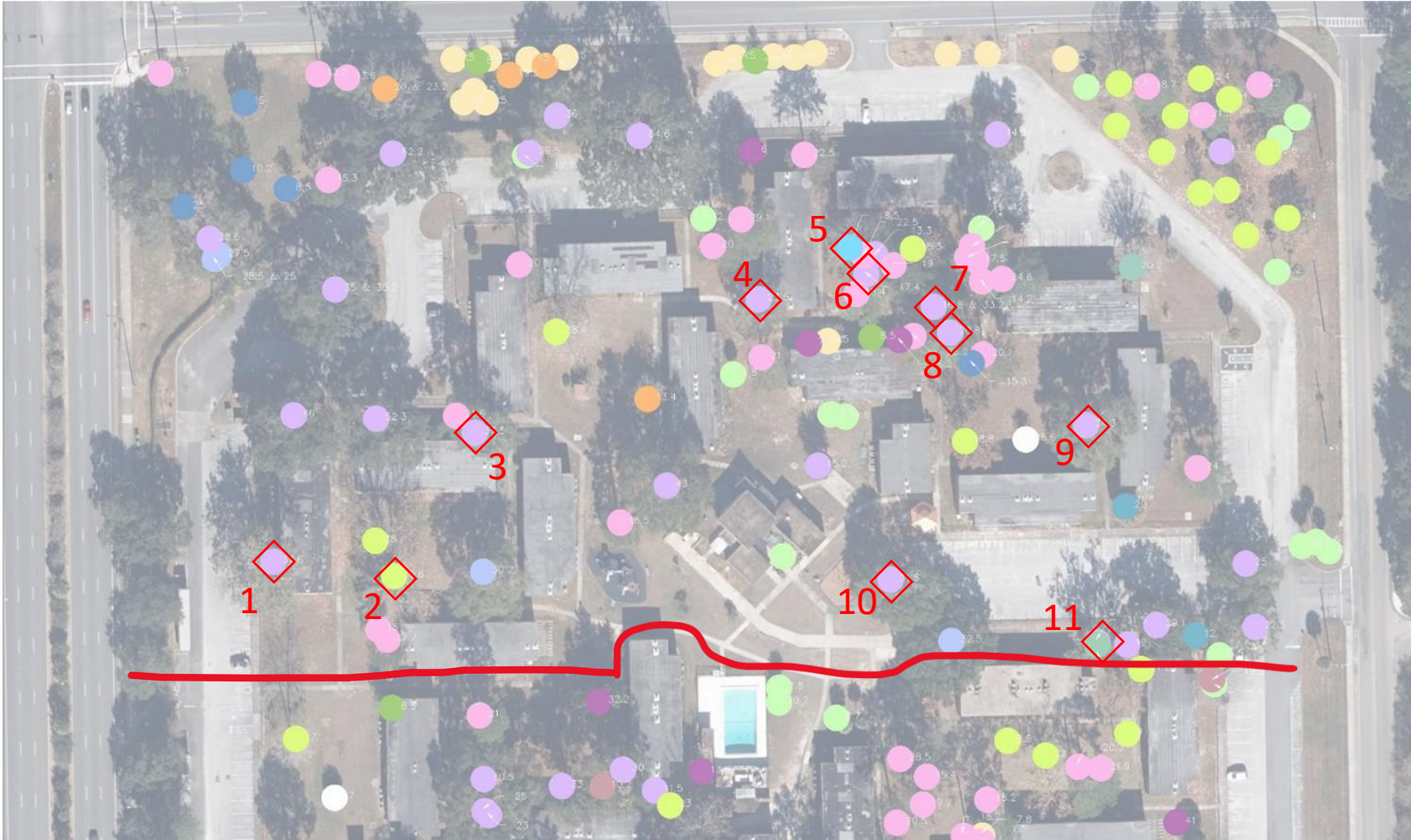


Maguire and University Apartments

MP09139

Trees recommended for removal

1. 37" Shumard Oak
2. 40" Multi-trunk Sycamore
3. 38" Laurel Oak
4. 43" Laurel Oak
5. 19" Elm
6. 17" Loblolly Pine
7. 17", 33" Laurel Oak
8. 21" Laurel Oak
9. 34" Willow Oak
10. 32" Laurel Oak
11. 32" Laurel Oak



Maguire and University Apartments

MP09139

Trees recommended for removal

1. 37" Shumard Oak
2. 40" Multi-trunk Sycamore
3. 38" Laurel Oak
4. 43" Laurel Oak
5. 19" Elm
6. 17" Loblolly Pine
7. 17", 33" Laurel Oak
8. 21" Laurel Oak
9. 34" Willow Oak
10. 32" Laurel Oak
11. 32" Laurel Oak



Maguire and University Apartments

MP09139

Trees recommended for removal

- 1. 37" Shumard Oak
- 2. 40" Multi-trunk Sycamore
- 3. 38" Laurel Oak
- 4. 43" Laurel Oak
- 5. 19" Elm
- 6. 17" Loblolly Pine
- 7. 17", 33" Laurel Oak
- 8. 21" Laurel Oak
- 9. 34" Willow Oak
- 10. 32" Laurel Oak
- 11. 32" Laurel Oak



Maguire and University Apartments

MP09139

Trees recommended for removal

1. 37" Shumard Oak
2. 40" Multi-trunk Sycamore
3. 38" Laurel Oak
4. 43" Laurel Oak
5. 19" Elm
6. 17" Loblolly Pine
7. 17", 33" Laurel Oak
8. 21" Laurel Oak
9. 34" Willow Oak
10. 32" Laurel Oak
11. 32" Laurel Oak



3. 38" Laurel Oak

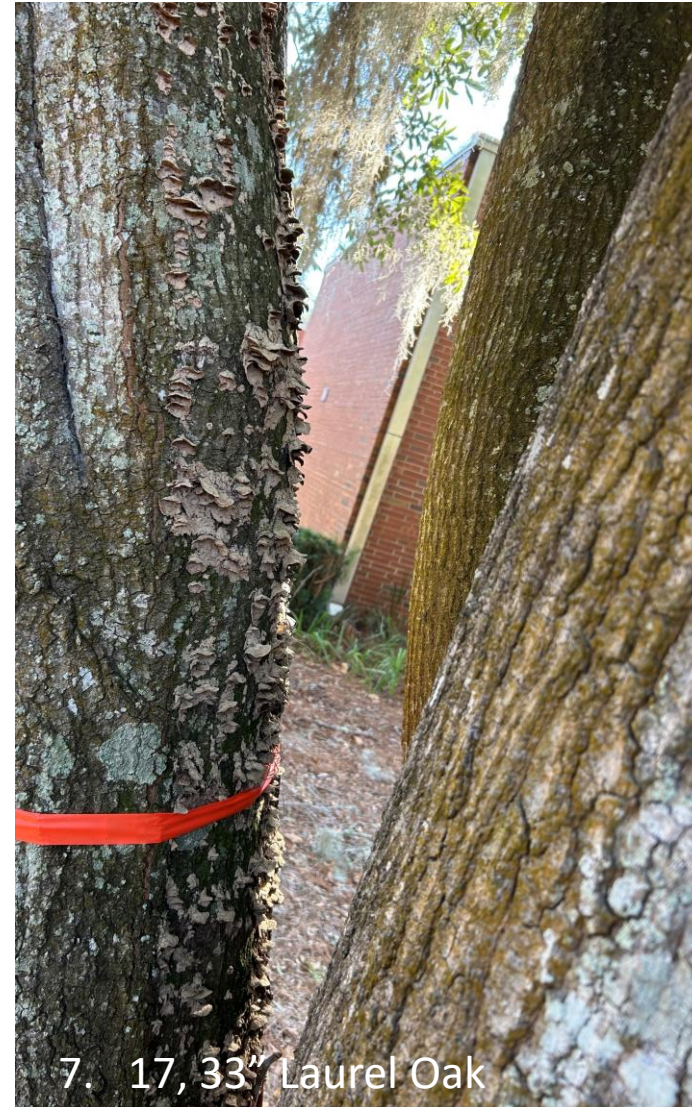


11. 32" Laurel Oak

MP09139

Trees recommended for removal

1. 37" Shumard Oak
2. 40" Multi-trunk Sycamore
3. 38" Laurel Oak
4. 43" Laurel Oak
5. 19" Elm
6. 17" Loblolly Pine
7. 17", 33" Laurel Oak
8. 21" Laurel Oak
9. 34" Willow Oak
10. 32" Laurel Oak
11. 32" Laurel Oak



Maguire and University Apartments

MP09139

Trees recommended for removal

1. 37" Shumard Oak
2. 40" Multi-trunk Sycamore
3. 38" Laurel Oak
4. 43" Laurel Oak
5. 19" Elm
6. 17" Loblolly Pine
7. 17", 33" Laurel Oak
8. 21" Laurel Oak
9. 34" Willow Oak
10. 32" Laurel Oak
11. 32" Laurel Oak



9. 34" Willow Oak



8. 21" Laurel Oak

Maguire and University Apartments

MP09139

Trees recommended for removal

1. 37" Shumard Oak
2. 40" Multi-trunk Sycamore
3. 38" Laurel Oak
4. 43" Live Oak
5. 19" Elm
6. 17" Loblolly Pine
7. 17", 33" Laurel Oak
8. 21" Laurel Oak
9. 34" Willow Oak
10. 32" Laurel Oak
11. 32" Laurel Oak

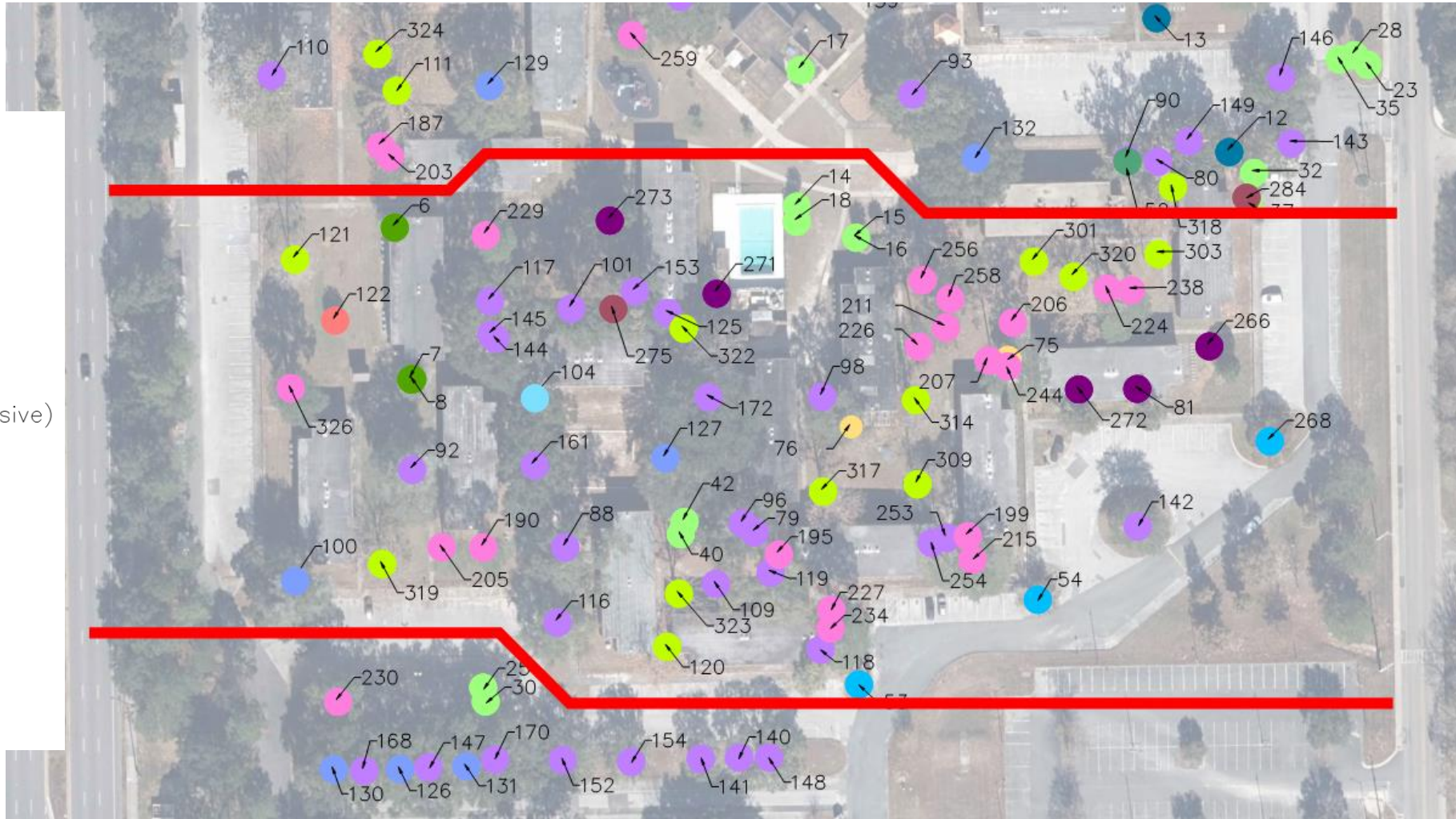


17" Loblolly Pine



MP09143

- Loblolly Pine
- Magnolia
- Red Cedar
- Red Maple
- Short leaf Pine
- Shumard Oak
- Soap Berry
- Swamp Chestnut Oak
- Sweet Gum
- Sycamore
- Water Oak
- Live Oak
- American Holly
- Black Cherry
- Bluff Oak
- Bradford Pear
- Cabbage Palm
- Camphor (Invasive)
- Cherry Laurel
- Chinese Elm
- Crape Myrtle
- Jelly Palm
- Laurel Oak

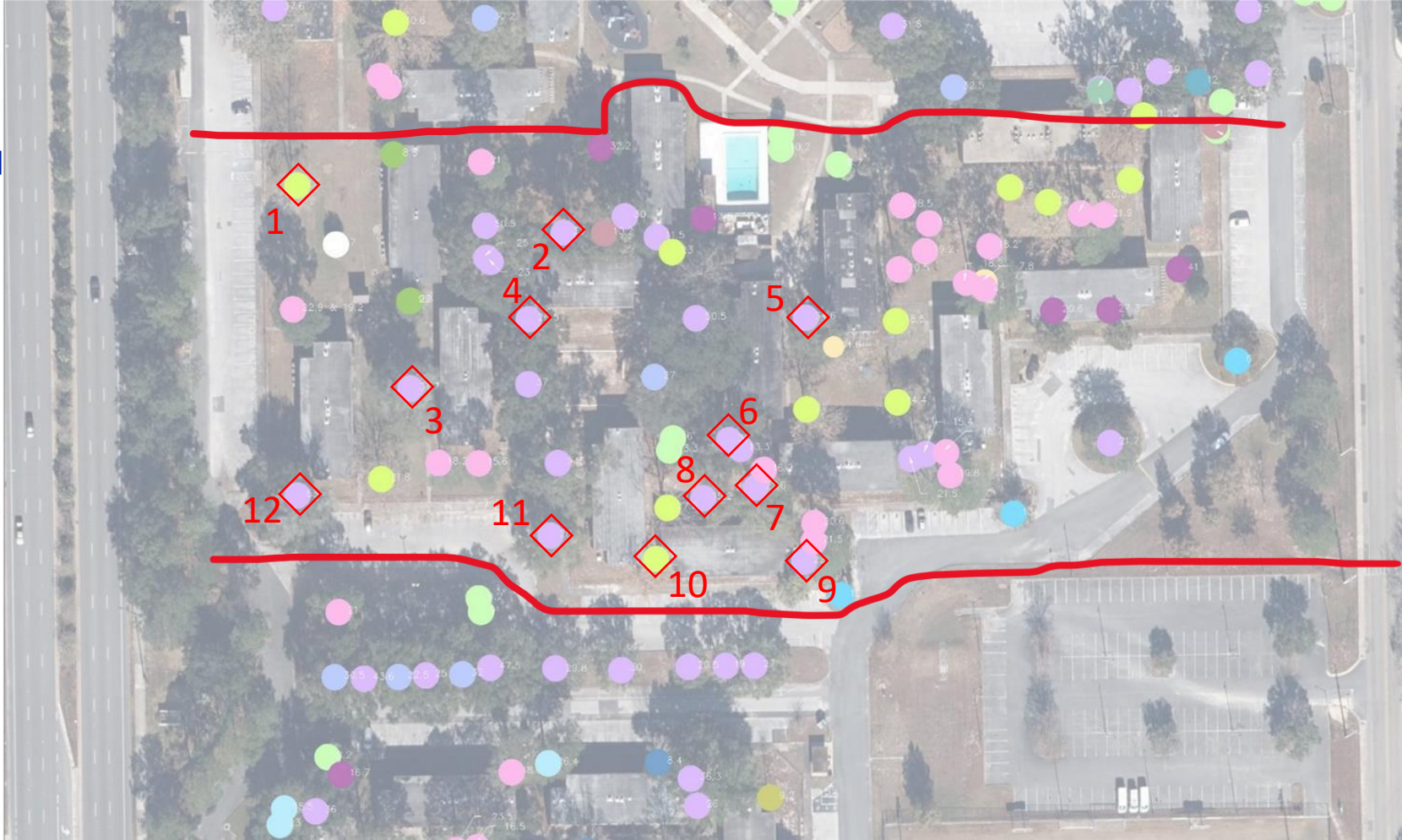


Maguire and University Apartments

MP09143

Trees recommended for removal

1. 27" Sycamore
2. 33" Laurel Oak
3. 32" Laurel Oak
4. 27" Spruce Pine
5. 35" Laurel Oak
6. 31" Laurel Oak
7. 23" Shumard Oak
8. 15" Shumard Oak
9. 22" Shumard Oak
10. 17" Sycamore
11. 28" Laurel Oak
12. 53" Laurel Oak



Maguire and University Apartments

MP09143

Trees recommended for removal

1. 27" Sycamore
2. 33" Laurel Oak
3. 32" Laurel Oak
4. 27" Spruce Pine
5. 35" Laurel Oak
6. 31" Laurel Oak
7. 23" Shumard Oak
8. 15" Shumard Oak
9. 22" Shumard Oak
10. 17" Sycamore
11. 28" Laurel Oak
12. 53" Laurel Oak



10. 17" Sycamore



12. 53" Laurel Oak

Maguire and University Apartments

MP09143

Trees recommended for removal

1. 27" Sycamore
2. 33" Laurel Oak
3. 32" Laurel Oak
4. 27" Spruce Pine
5. 35" Laurel Oak
6. 31" Laurel Oak
7. 23" Shumard Oak
8. 15" Shumard Oak
9. 22" Shumard Oak
10. 17" Sycamore
11. 28" Laurel Oak
12. 53" Laurel Oak



Maguire and University Apartments

MP09143

Trees recommended for removal

1. 27" Sycamore
2. 33" Laurel Oak
3. 32" Laurel Oak
4. 27" Spruce Pine
5. 35" Laurel Oak
6. 31" Laurel Oak
7. 23" Shumard Oak
8. 15" Shumard Oak
9. 22" Shumard Oak
10. 17" Sycamore
11. 28" Laurel Oak
12. 53" Laurel Oak



Maguire and University Apartments

MP09143

Trees recommended for removal

1. 27" Sycamore
2. 33" Laurel Oak
3. 32" Laurel Oak
4. 27" Spruce Pine
5. 35" Laurel Oak
6. 31" Laurel Oak
7. 23" Shumard Oak
8. 15" Shumard Oak
9. 22" Shumard Oak
10. 17" Sycamore
11. 28" Laurel Oak
12. 53" Laurel Oak



5. 35" Laurel Oak



5. 35" Laurel Oak

Maguire and University Apartments

MP09143

Trees recommended for removal

1. 27" Sycamore
2. 33" Laurel Oak
3. 32" Laurel Oak
4. 27" Spruce Pine
5. 35" Laurel Oak
6. 31" Laurel Oak
7. 23" Shumard Oak
8. 15" Shumard Oak
9. 22" Shumard Oak
10. 17" Sycamore
11. 28" Laurel Oak
12. 53" Laurel Oak



6. 31" Laurel Oak



8. 15" Shumard Oak

Maguire and University Apartments

MP09143

Trees recommended for removal

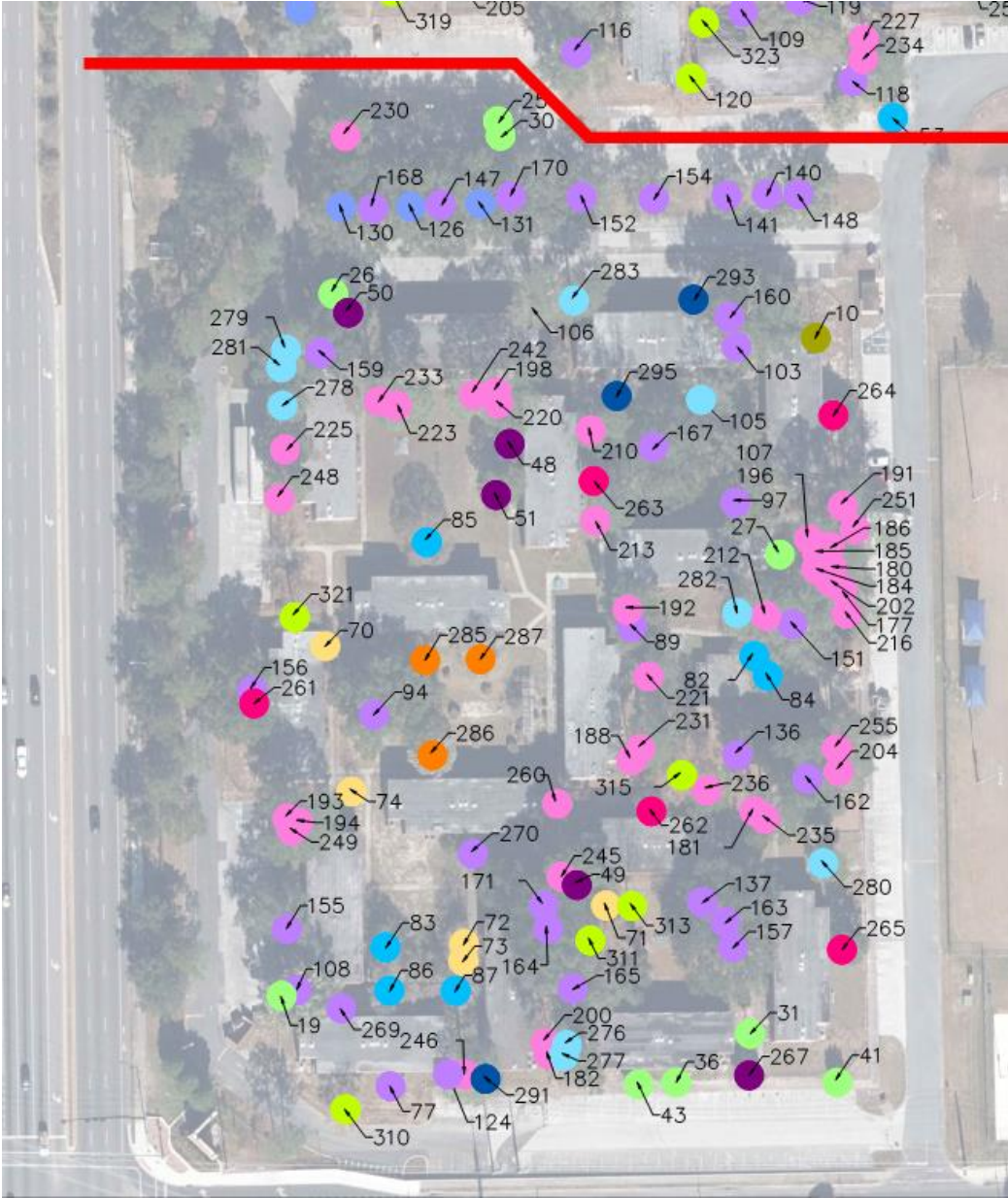
1. 27" Sycamore
2. 33" Laurel Oak
3. 32" Laurel Oak
4. 27" Spruce Pine
5. 35" Laurel Oak
6. 31" Laurel Oak
7. 23" Shumard Oak
8. 15" Shumard Oak
9. 22" Shumard Oak
10. 17" Sycamore
11. 28" Shumard Oak
12. 53" Laurel Oak



11. 28" Shumard Oak

MP09130

- | | |
|--------------------|--------------------|
| Loblolly Pine | American Holly |
| Magnolia | Black Cherry |
| Red Cedar | Bluff Oak |
| Red Maple | Bradford Pear |
| Short leaf Pine | Cabbage Palm |
| Shumard Oak | Camphor (Invasive) |
| Soap Berry | Cherry Laurel |
| Swamp Chestnut Oak | Chinese Elm |
| Sweet Gum | Crape Myrtle |
| Sycamore | Jelly Palm |
| Water Oak | Laurel Oak |
| Live Oak | |

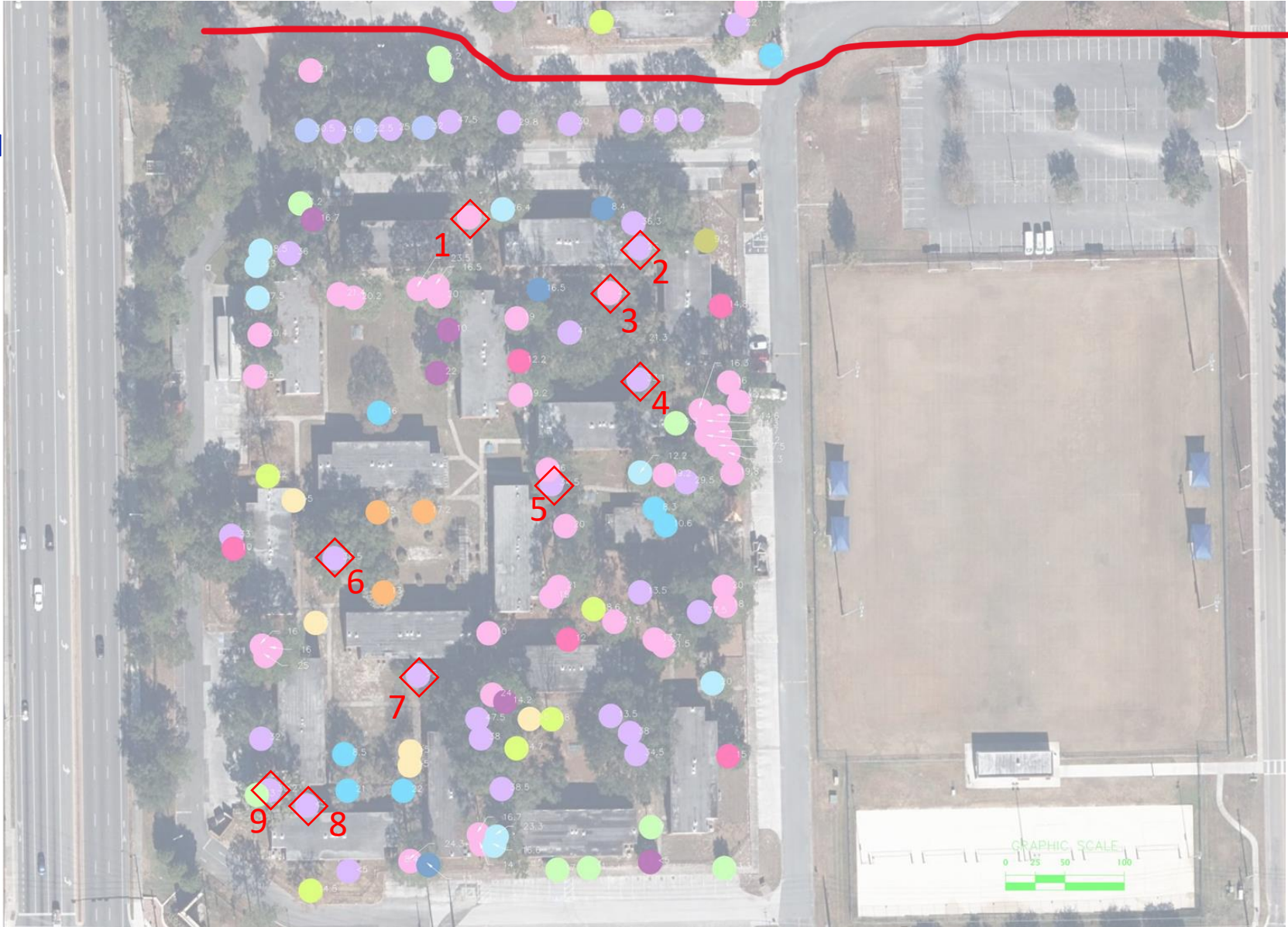


Maguire and University Apartments

MP09130

Trees recommended for removal

1. 39" Laurel Oak
2. 26" Loblolly Pine
3. 21" Loblolly Pine
4. 33" Laurel Oak
5. 35" Camphor (Exotic Invasive)
6. 39" Laurel Oak
7. Multi-trunk Cherry Laurel
8. Multi-trunk Cedar
9. 30" Shumard Oak



Maguire and University Apartments

MP09130

Trees recommended for removal

1. 39" Laurel Oak
2. 26" Loblolly Pine
3. 21" Loblolly Pine
4. 33" Laurel Oak
5. 35" Camphor (Exotic Invasive)
6. 39" Laurel Oak
7. Multi-trunk Cherry Laurel
8. Multi-trunk Cedar
9. 30" Shumard Oak



1. 39" Laurel Oak



2. 26" Loblolly Pine

Maguire and University Apartments

MP09130

Trees recommended for removal

1. 39" Laurel Oak
2. 26" Loblolly Pine
3. 21" Loblolly Pine
4. 33" Laurel Oak
5. 35" Camphor (Exotic Invasive)
6. 39" Laurel Oak
7. Multi-trunk Cherry Laurel
8. Multi-trunk Cedar
9. 30" Shumard Oak



3. 21" Loblolly Pine



5. 35" Camphor (Exotic Invasive)

Maguire and University Apartments

MP09130

Trees recommended for removal

1. 39" Laurel Oak
2. 26" Loblolly Pine
3. 21" Loblolly Pine
4. 33" Laurel Oak
5. 35" Camphor (Exotic Invasive)
6. 39" Laurel Oak
7. Multi-trunk Cherry Laurel
8. Multi-trunk Cedar
9. 30" Shumard Oak



4. 33" Laurel Oak

Maguire and University Apartments

MP09130

Trees recommended for removal

1. 39" Laurel Oak
2. 26" Loblolly Pine
3. 21" Loblolly Pine
4. 33" Laurel Oak
5. 35" Camphor (Exotic Invasive)
6. 39" Laurel Oak
7. Multi-trunk Cherry Laurel
8. Multi-trunk Cedar
9. 30" Shumard Oak



6. 39" Laurel Oak



7. Multi-trunk Cherry Laurel

Maguire and University Apartments

MP09130

Trees recommended for removal

1. 39" Laurel Oak
2. 26" Loblolly Pine
3. 21" Loblolly Pine
4. 33" Laurel Oak
5. 35" Camphor (Exotic Invasive)
6. 39" Laurel Oak
7. Multi-trunk Cherry Laurel
8. Multi-trunk Cedar
9. 30" Shumard Oak



8. Multi-trunk Cedar



9. 30" Shumard

FID	Name
1	American Holly ~ 8.5
2	Acer Maple ~ 18.5
3	Acer Maple ~ 19.5
4	American Holly < 11.5
5	American Holly ~ 8.5
6	American Holly ~ 8.8
7	American Holly ~ 9.6
8	American Holly ~ Double Trunk ~ 20
9	American Sycamore ~ 14.3
10	Black Cherry ~ 9.2
11	Bluff Oak ~ 20.2
12	Bradford Pear ~ 12
13	Bradford Pear ~ 20
14	Cabbage ~ 7.8
15	Cabbage ~ 7.7
16	Cabbage ~ 8
17	Cabbage ~ 9.5
18	Cabbage ~ 10.2
19	Cabbage ~ 13
20	Cabbage Palm ~ 6
21	Cabbage Palm ~ 7
22	Cabbage Palm ~ 7.8
23	Cabbage Palm ~ 8
24	Cabbage Palm ~ 8.2
25	Cabbage Palm ~ 8.2
26	Cabbage Palm ~ 8.2
27	Cabbage Palm ~ 8.3
28	Cabbage Palm ~ 8.5
29	Cabbage Palm ~ 9
30	Cabbage Palm ~ 9
31	Cabbage Palm ~ 9
32	Cabbage Palm ~ 9.5
33	Cabbage Palm ~ 9.6
34	Cabbage Palm ~ 9.8
35	Cabbage Palm ~ 10
36	Cabbage Palm ~ 11
37	Cabbage Palm ~ 11.5
38	Cabbage Palm ~ 12
39	Cabbage Palm ~ 12.4
40	Cabbage Palm ~ 13.3
41	Cabbage Palm ~ 13.3
42	Cabbage Palm ~ 16
43	Cabbage Palm ~ 17
44	Cabbage Palm ~ 17.7
45	Cedar ~ 6
46	Cedar ~ 6.2
47	Cedar ~ 7.3
48	Cedar ~ 10
49	Cedar ~ 14.2

FID	Name	Description
50	Cedar ~ 16.7	Red Cedar
51	Cedar ~ 22	Red Cedar
52	Cherry Laurel ~ 7	Cherry Laurel
53	Chinese Elm ~ 12	Chinese Elm
54	Chinese Elm ~ 13	Chinese Elm
55	CM < 5	Crape Myrtle
56	CM < 5	Crape Myrtle
57	CM < 5	Crape Myrtle
58	CM < 5	Crape Myrtle
59	CM < 5	Crape Myrtle
60	CM < 5	Crape Myrtle
61	CM < 5	Crape Myrtle
62	CM < 5	Crape Myrtle
63	CM < 5	Crape Myrtle
64	CM < 5	Crape Myrtle
65	CM < 5	Crape Myrtle
66	CM < 5	Crape Myrtle
67	CM < 5	Crape Myrtle
68	CM < 5	Crape Myrtle
69	CM < 5	Crape Myrtle
70	Crape Myrtle > 5	Crape Myrtle
71	Crape Myrtle > 5	Crape Myrtle
72	Crape Myrtle > 5	Crape Myrtle
73	Crape Myrtle > 5	Crape Myrtle
74	Crape Myrtle ~ 6	Crape Myrtle
75	Crape Myrtle ~ 7.8	Crape Myrtle
76	Crape Myrtle ~ 11.5	Crape Myrtle
77	Crape Myrtle < 5 Dead	Crape Myrtle
78	Crepe Myrtle < 5	Crape Myrtle
79	Dead ~ Shortleaf Pine ~ 13.3	Short Leaf Pine
80	DEAD oak ~ 12	Oak
81	Double Trunk Cedar? ~ 27.3	Red Cedar
82	ELM ~ 8.3	Chinese Elm
83	Elm ~ 8.5	Chinese Elm
84	Elm ~ 10.6	Chinese Elm
85	Elm ~ 16	Chinese Elm
86	Elm ~ 21	Chinese Elm
87	Elm ~ 22	Chinese Elm
88	Fallen Laurel Oak	Laurel Oak - Fallen
89	Invasive Exotic Camphor Tree ~ 34.5	Camphor_Invasive
90	Laurel Oak ~ 31.5	Laurel Oak
91	Elm ~ 18.5	Elm
92	Laurel ~ 31.7	Laurel
93	Laurel ~ 31.8	Laurel
94	Laurel ~ 38.5	Laurel
95	Laurel Oak ~ 20.8	Laurel
96	Laurel Oak ~ 31	Laurel
97	Laurel Oak ~ 33.1	Laurel
98	Laurel Oak ~ Close To Building ~ 34.6	Laurel
99	Laurel Oak ~ Double Trunk ~ 16.8 & 33.2	Laurel

FID	Name
100	Laurel Oak ~ 53
101	Live Oak ~ 33
102	Live Oak ~ 43
103	Loblolly ~ 26
104	Short Leaf Pine ~ 26.5
105	Shortleaf ~ 21
106	Shortleaf Pine ~ 38.6
107	Shumard ~ 21.3
108	Shumard ~ 30.2
109	Shumard Oak ~ 15.2
110	Shumard Oak ~ 37.6
111	Sycamore ~ Double Trunk ~ 40.6
112	Water Oak ~ 17.4
113	Water Oak ~ 23.5
114	Willow Oak ~ 34.3
115	Laurel ~ 37.5
116	Laurel Oak ~ 28
117	Live Oak ~ 50.5 ~ Maybe Multi Trunk
118	Shumard Oak ~ 22
119	Shumard Oak ~ 22.6
120	Sycamore ~ 17
121	Sycamore ~ 27
122	Jelly Palm ~ 17
123	Jelly Palm ~ 25.6
124	Laurel Cherry ~ 8.4
125	Laurel Cherry ~ Close To Building ~ 11.5
126	Laurel Oak ~ 22.5
127	Laurel Oak ~ 27
128	Laurel Oak ~ 27.5
129	Laurel Oak ~ 30.2
130	Laurel Oak ~ 30.5
131	Laurel Oak ~ 32
132	Laurel Oak ~ 32.5
133	Laurel Oak ~ Two Trunk ~ 28.5 & 25
134	Live Oak ~ 13.3
135	Live Oak ~ 13.3
136	Live Oak ~ 13.5
137	Live Oak ~ 13.5
138	Live Oak ~ 14.6
139	Live Oak ~ 15.2
140	Live Oak ~ 19
141	Live Oak ~ 20.5
142	Live Oak ~ 21.7
143	Live Oak ~ 22.5
144	Live Oak ~ 23
145	Live Oak ~ 25
146	Live Oak ~ 25
147	Live Oak ~ 25
148	Live Oak ~ 27
149	Live Oak ~ 29.1

FID	Name
150	Live Oak ~ 29.5
151	Live Oak ~ 29.5
152	Live Oak ~ 29.8
153	Live Oak ~ 30
154	Live Oak ~ 30
155	Live Oak ~ 32
156	Live Oak ~ 33
157	Live Oak ~ 34.5
158	Live Oak ~ 36
159	Live Oak ~ 36
160	Live Oak ~ 36.3
161	Live Oak ~ 37
162	Live Oak ~ 37.5
163	Live Oak ~ 38
164	Live Oak ~ 38
165	Live Oak ~ 38.5
166	Live Oak ~ 38.6
167	Live Oak ~ 41
168	Live Oak ~ 43.6
169	Live Oak ~ 46
170	Live Oak ~ 47.5
171	Live Oak ~ 47.5
172	Live Oak ~ 50.5
173	Live Oak ~ 52.3
174	Live oak ~ 62.2
175	Live Oak ~ 84.6
176	Live Oak ~ Two Trunks ~ 35 & 35.2
177	Loblolly ~ 12.3
178	Loblolly ~ 13.2
179	Loblolly ~ 13.6
180	Loblolly ~ 13.7
181	Loblolly ~ 13.7
182	Loblolly ~ 14
183	Loblolly ~ 14.2
184	Loblolly ~ 14.2
185	Loblolly ~ 14.3
186	Loblolly ~ 14.6
187	Loblolly ~ 15
188	Loblolly ~ 15
189	Loblolly ~ 15.3
190	Loblolly ~ 15.6
191	Loblolly ~ 16
192	Loblolly ~ 16
193	Loblolly ~ 16
194	Loblolly ~ 16
195	Loblolly ~ 16.2
196	Loblolly ~ 16.3
197	Loblolly ~ 16.5
198	Loblolly ~ 16.5
199	Loblolly ~ 16.7

FID	Name
200	Loblolly ~ 16.7
201	Loblolly ~ 17.5
202	Loblolly ~ 17.5
203	Loblolly ~ 17.7
204	Loblolly ~ 18
205	Loblolly ~ 18.2
206	Loblolly ~ 18.2
207	Loblolly ~ 18.2
208	Loblolly ~ 18.4
209	Loblolly ~ 19
210	Loblolly ~ 19
211	Loblolly ~ 19.2
212	Loblolly ~ 19.2
213	Loblolly ~ 19.2
214	Loblolly ~ 19.7
215	Loblolly ~ 19.8
216	Loblolly ~ 19.8
217	Loblolly ~ 20
218	Loblolly ~ 20
219	Loblolly ~ 20
220	Loblolly ~ 20
221	Loblolly ~ 20
222	Loblolly ~ 20.1
223	Loblolly ~ 20.2
224	Loblolly ~ 20.3
225	Loblolly ~ 20.4
226	Loblolly ~ 20.5
227	Loblolly ~ 20.6
228	Loblolly ~ 21
229	Loblolly ~ 21
230	Loblolly ~ 21
231	Loblolly ~ 21
232	Loblolly ~ 21.3
233	Loblolly ~ 21.4
234	Loblolly ~ 21.5
235	Loblolly ~ 21.5
236	Loblolly ~ 21.5
237	Loblolly ~ 21.6
238	Loblolly ~ 21.9
239	Loblolly ~ 22
240	Loblolly ~ 22.5
241	Loblolly ~ 22.5
242	Loblolly ~ 23.5
243	Loblolly ~ 24
244	Loblolly ~ 24
245	Loblolly ~ 24
246	Loblolly ~ 24.3
247	Loblolly ~ 24.6
248	Loblolly ~ 25
249	Loblolly ~ 25

FID	Name
250	Loblolly ~ 26.2
251	Loblolly ~ 27
252	Loblolly ~ 29.1
253	Loblolly ~ Close To Building ~ 15.4
254	Loblolly ~ Close To Building ~ 21.5
255	Loblolly ~ 20
256	Loblolly Double Trunk ~ 28.5
257	Loblolly Pine ~ 18.7
258	Loblolly ~ 15.4
259	Loblolly ~ 18.5
260	Loquat ~ 10
261	Magnolia ~ 10
262	Magnolia ~ 12
263	Magnolia ~ 12.2
264	Magnolia ~ 14.8
265	Magnolia ~ 15
266	Many Trunk Cedar ~ 41
267	Multi Stem Cedar < 5
268	Multi Trunk Elm ~ 6
269	Needs To Go ~ Cedar ~ Multi Trunk
270	Needs to Go ~ Laurel Cherry ~ Multi Stem
271	Red Cedar ~ 13.5
272	Red Cedar ~ 20.6
273	Red Cedar ~ 32.2
274	Red Maple ~ 13.4
276	Schumard Oak ~ 10.2
277	Short Leaf ~ 23.3
278	Shortleaf ~ 16.6
279	Shortleaf ~ 17.5
280	Shortleaf ~ 18.5
281	Shortleaf ~ 20
282	Shortleaf ~ 23
283	Shortleaf Pine ~ 12.2
284	Shortleaf Pine ~ 26.4
285	Shumard Oak ~ 19.5
286	Soap Berry ~ 15
287	Soapberry ~ 13
288	Soapberry ~ 17.2
289	Sugar berry ~ Two Trunks ~ 20 & 23.2
291	Swamp Chestnut Oak ~ 8.5
292	Swamp Chestnut Oak ~ 10.2
293	Swamp Chestnut Oak ~ 13
294	Swamp Chestnut Oak ~ 15
295	Sweet Gum ~ 8.4
296	Sweet Gum ~ 15.3
297	Sweet Gum ~ 16.5
298	Sweet gum ~ 25
299	Sycamore ~ 6.1
300	Sycamore ~ 6.6
301	Sycamore ~ 7.4

FID	Name
302	Sycamore ~ 8.3
303	Sycamore ~ 8.5
304	Sycamore ~ 9
305	Sycamore ~ 9
306	Sycamore ~ 10.2
307	Sycamore ~ 11
308	Sycamore ~ 12.4
309	Sycamore ~ 12.4
310	Sycamore ~ 13.6
311	Sycamore ~ 14.4
312	Sycamore ~ 14.5
313	Sycamore ~ 14.7
314	Sycamore ~ 15.3
315	Sycamore ~ 18
316	Sycamore ~ 18.5
317	Sycamore ~ 18.6
318	Sycamore ~ 18.8
319	Sycamore ~ 21
320	Sycamore ~ 21.2
321	Sycamore ~ 21.8
322	Sycamore ~ 22
323	Sycamore ~ 22
324	Sycamore ~ 23
325	Sycamore ~ 27.6
326	Sycamore ~ 28
327	Sycamore ~ 28.4
328	Loblolly ~ 22.9 And 19.2



A motion to approve the project as presented.

MP09130, MP09139, + MP09143

Maguire and University Apartments