

MP08578 BUCKMAN DRIVE & FLETCHER DRIVE

ONE WAY PAIRS STUDY & DESIGN

Public Informational Meeting
April 10, 2024

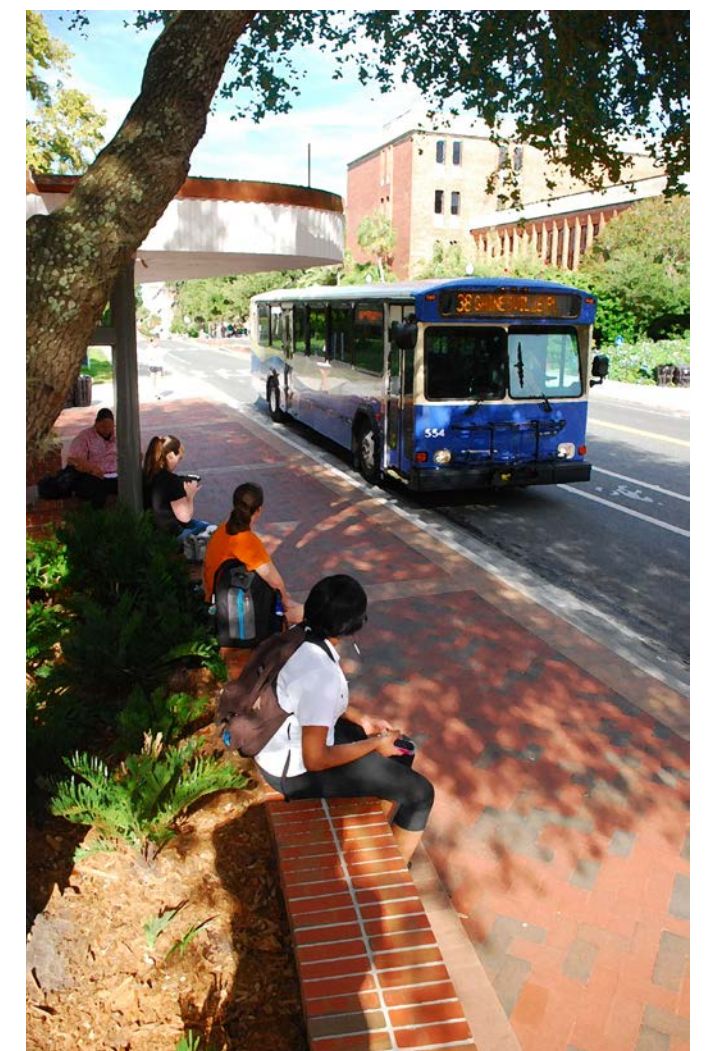
Melanie Heflin, Project Manager

CH2M
AN NV5 COMPANY

UF
UNIVERSITY of
FLORIDA



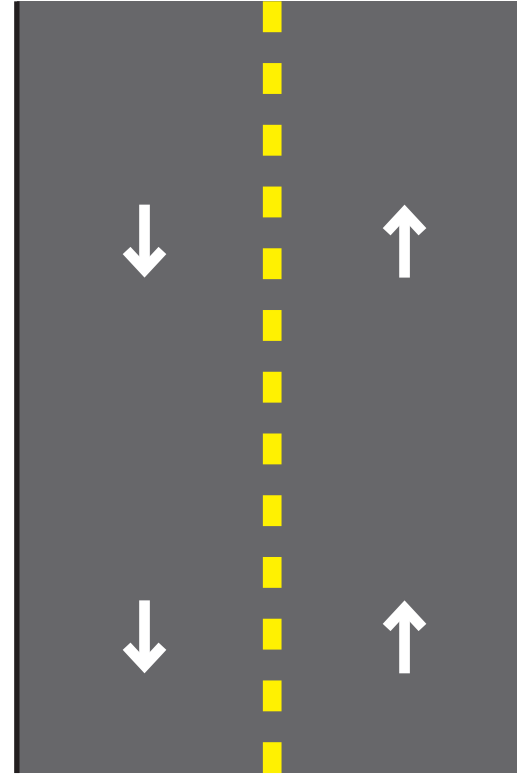
- Explore conversion of Fletcher Drive and Buckman Drive to **one-way pairs** to integrate with the configurations at NW 17th Street and NW 18th Street.
- Enhance pedestrian and bicycle travel and encourage **safer non-vehicular travel** by reducing conflicts.
- Accommodate **buses and emergency vehicles**.
- **Improve loading zones** for official vehicles and delivery vehicles. Discourage street parking of delivery vehicles.



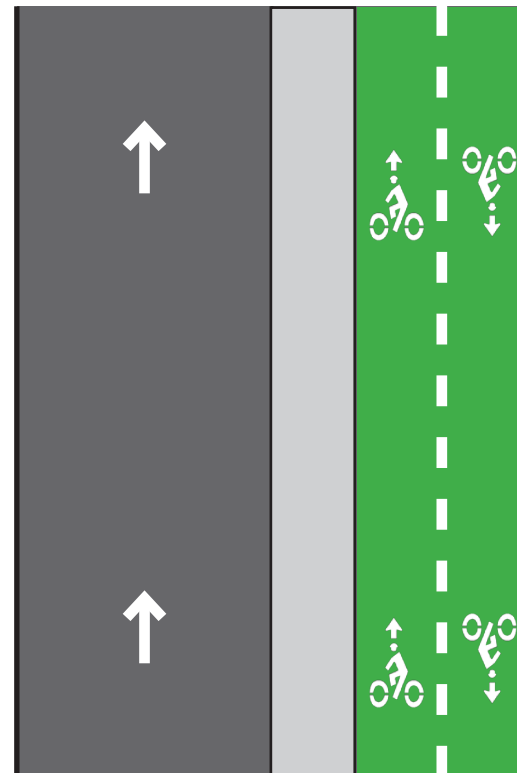
WHAT IS A ONE-WAY PAIR?

- A one-way pair is a traffic controlling roadway design that converts two-way corridors into 2 one-way corridors operating in different directions. (MTPO Urban Design Policy)
- This method is utilized often in urban areas where curbs are unable to be moved.
- One-way pairs are typically a low cost option, and can be implemented with striping/markings, signage, and signal updates.
- The conversion from two-lane to one-lane traffic can provide dedicated space for bikes, pedestrians, and other modes of transportation.
- One-way pairs reduce opportunities for bike/pedestrian conflicts with vehicular traffic.

TWO WAY STREET



ONE WAY PAIR



	NOVEMBER				DECEMBER				JANUARY				FEBRUARY				MARCH				APRIL			
	WEEK 1	WEEK 2	WEEK 3	WEEK 4	WEEK 1	WEEK 2	WEEK 3	WEEK 4	WEEK 1	WEEK 2	WEEK 3	WEEK 4	WEEK 1	WEEK 2	WEEK 3	WEEK 4	WEEK 1	WEEK 2	WEEK 3	WEEK 4	WEEK 1	WEEK 2	WEEK 3	WEEK 4
PTAC Meeting			11/28																					
1st Stakeholders Meeting				12/5																				
PDC/PTAC Meeting					12/12																			
2nd Stakeholders Meeting						12/18																		
LVL								1/4																
PTAC									1/9															
PHBS										1/16														
Land Use													2/6											
Public Meeting #1 (Public Forum - Informational Session)																				3/27				
Public Meeting #2 (Zoom Call)																							4/10	
60% Drawings & Narrative/Presentation																								

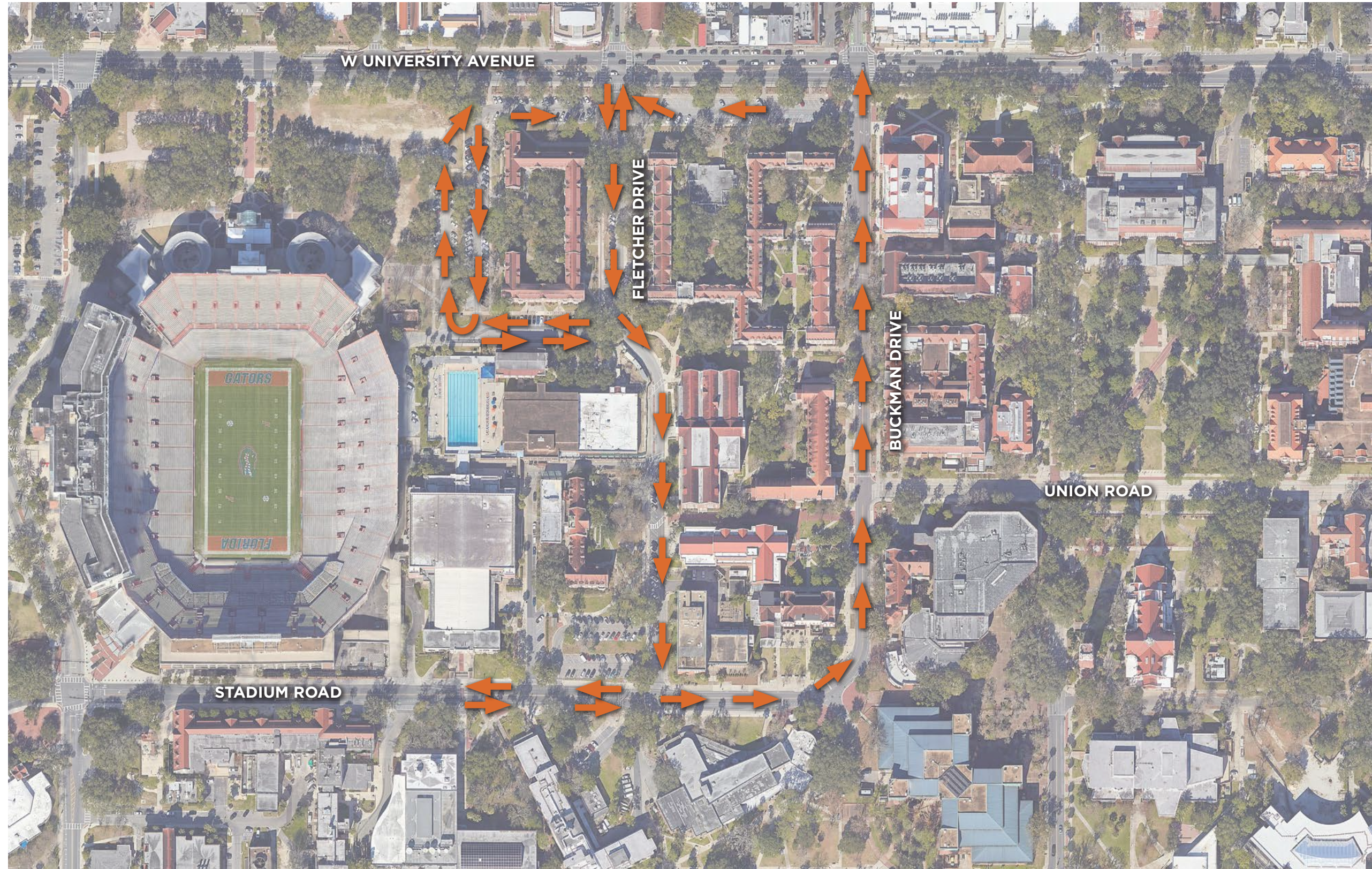




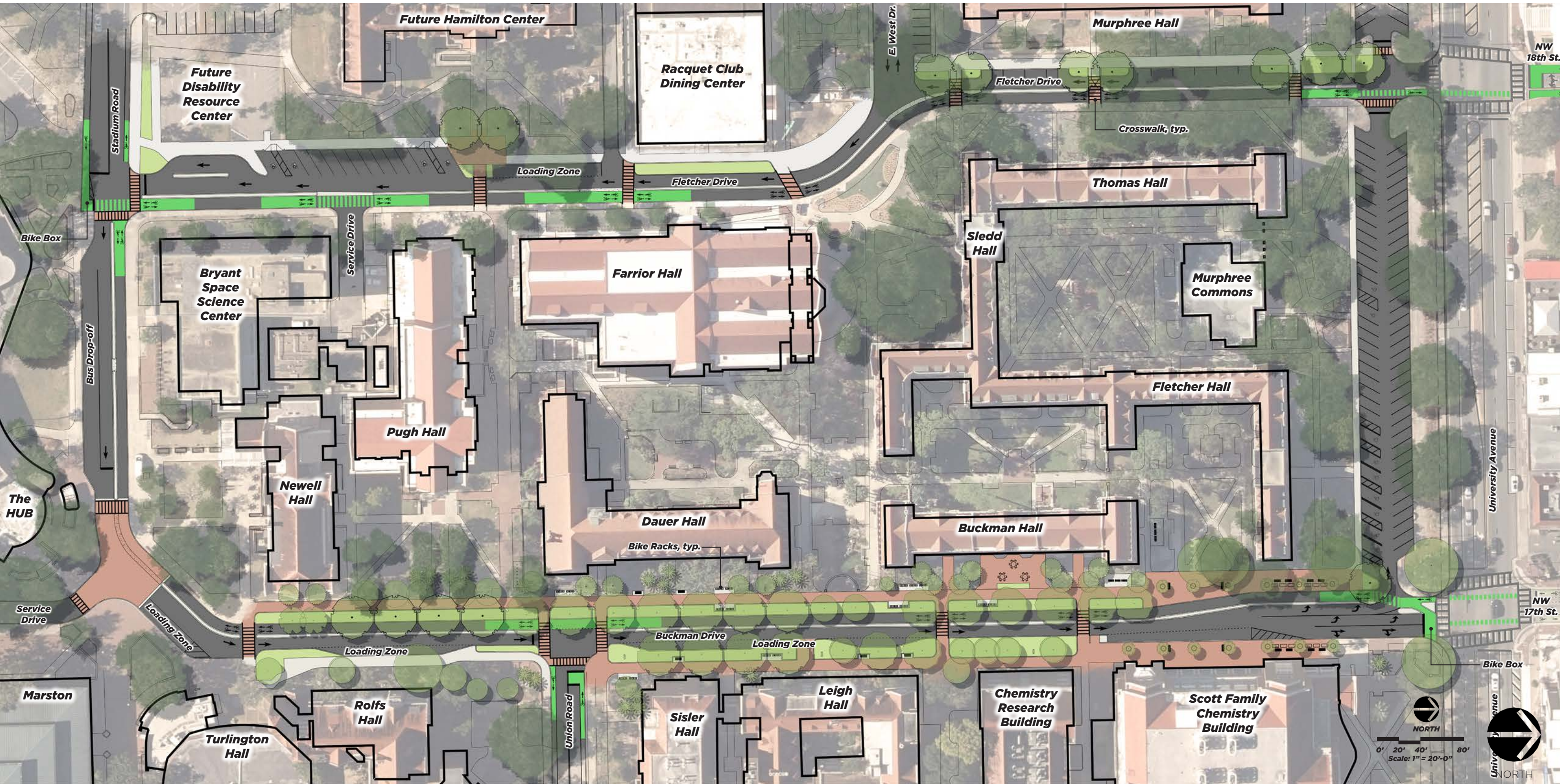
RECOMMENDED OPTION

MP08578 BUCKMAN DRIVE & FLETCHER DRIVE
ONE WAY PAIRS STUDY & DESIGN

BUCKMAN DRIVE & FLETCHER DRIVE | ROUTING MAP (ONE WAY PAIRS)

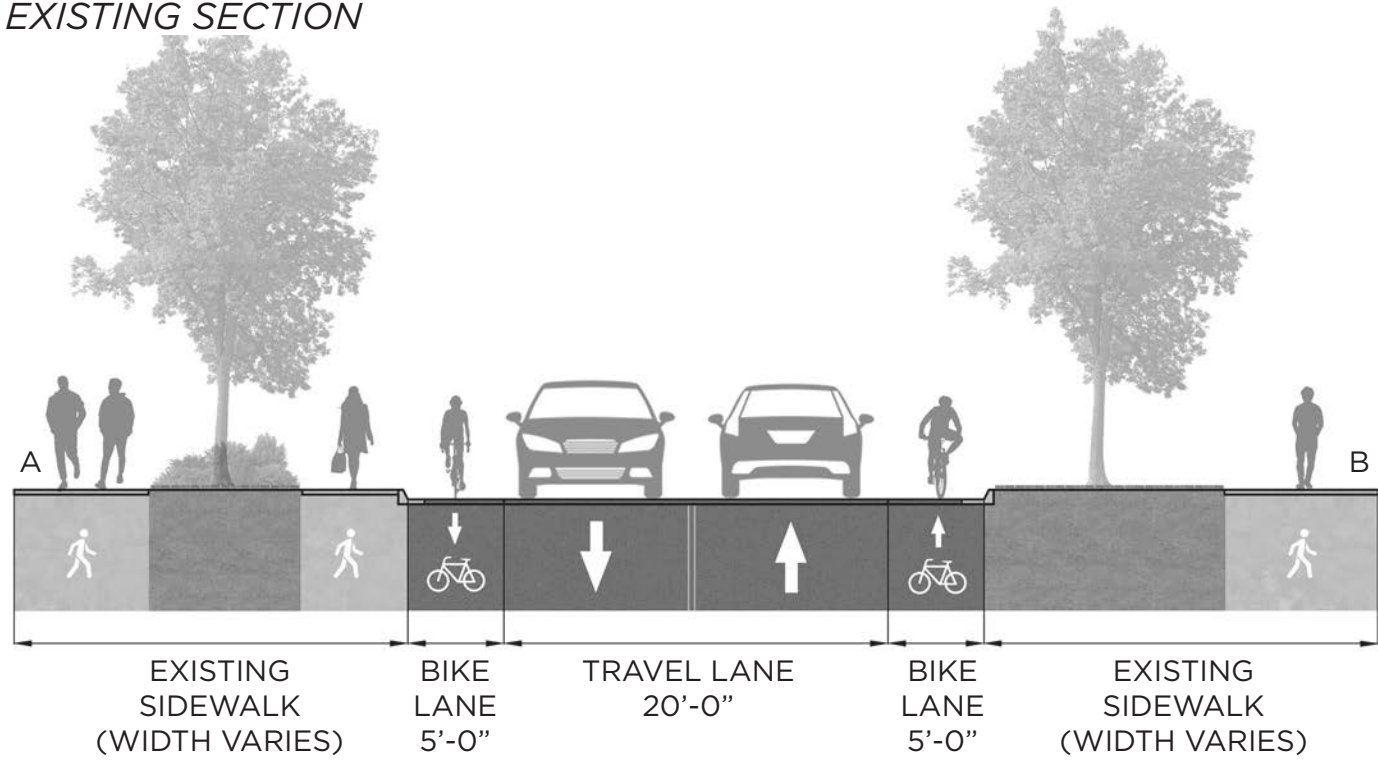


BUCKMAN DRIVE & FLETCHER DRIVE | SITE PLAN

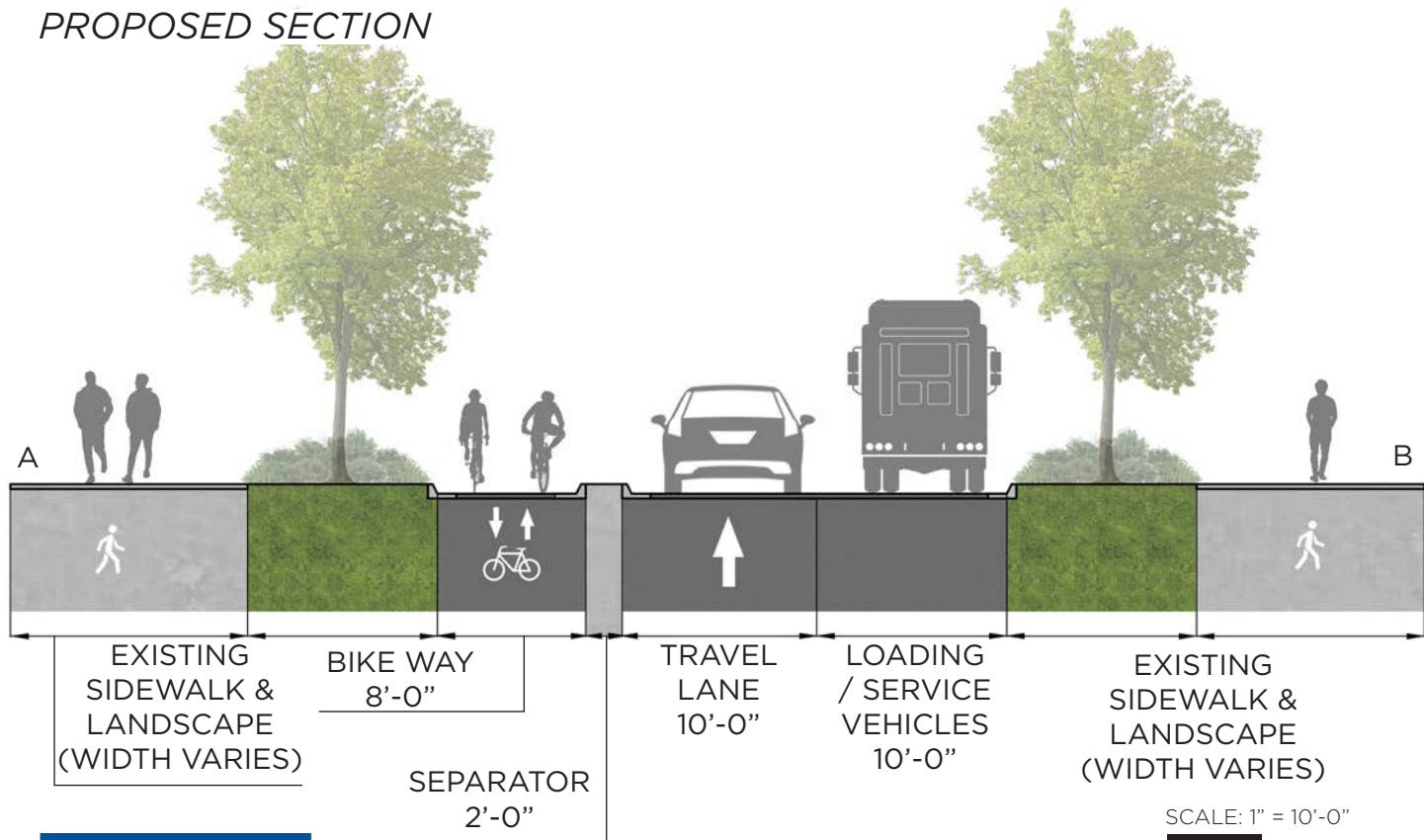


BUCKMAN DRIVE | SEPARATOR/TWO-WAY CYCLE TRACK

EXISTING SECTION



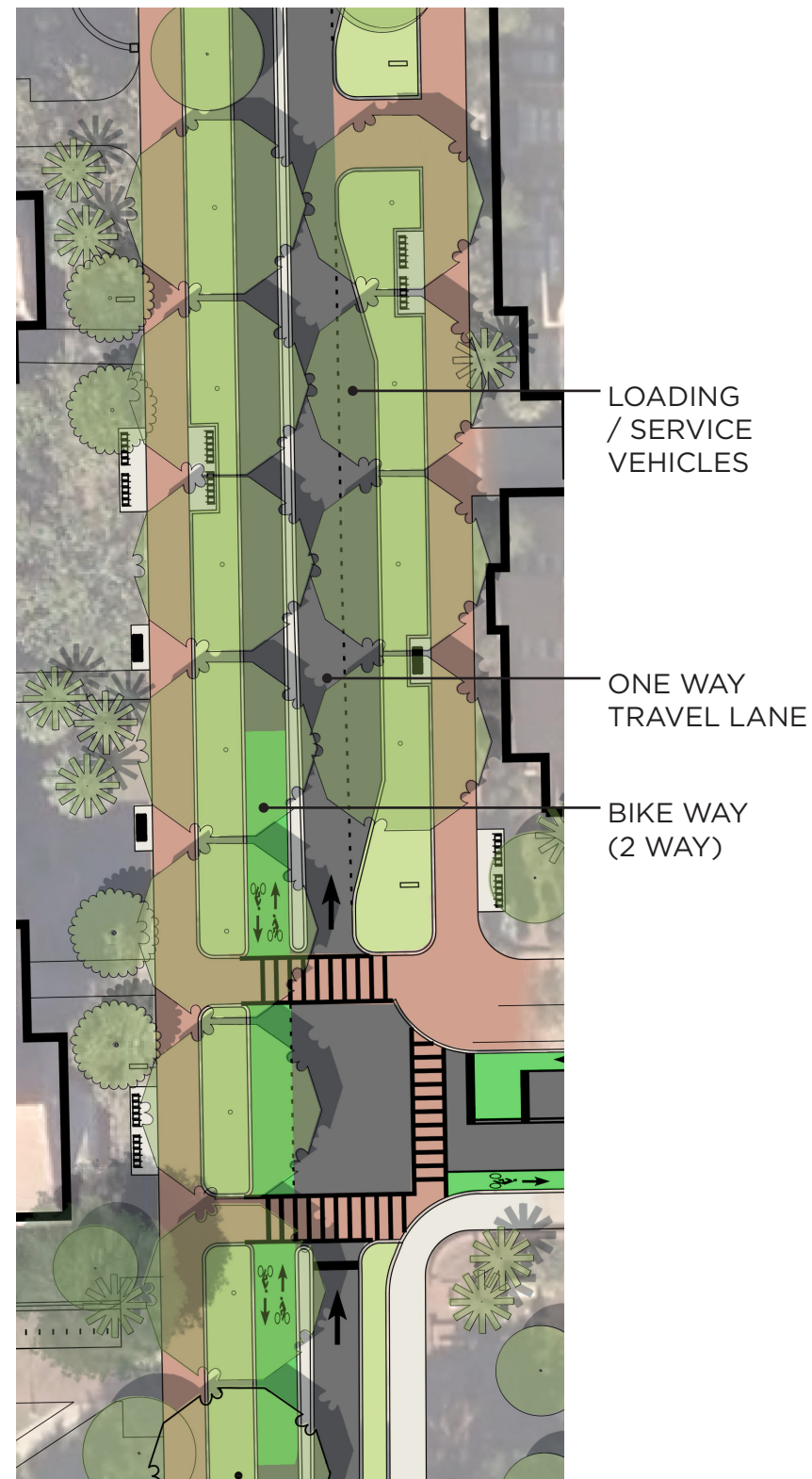
PROPOSED SECTION



SCALE: 1" = 10'-0"

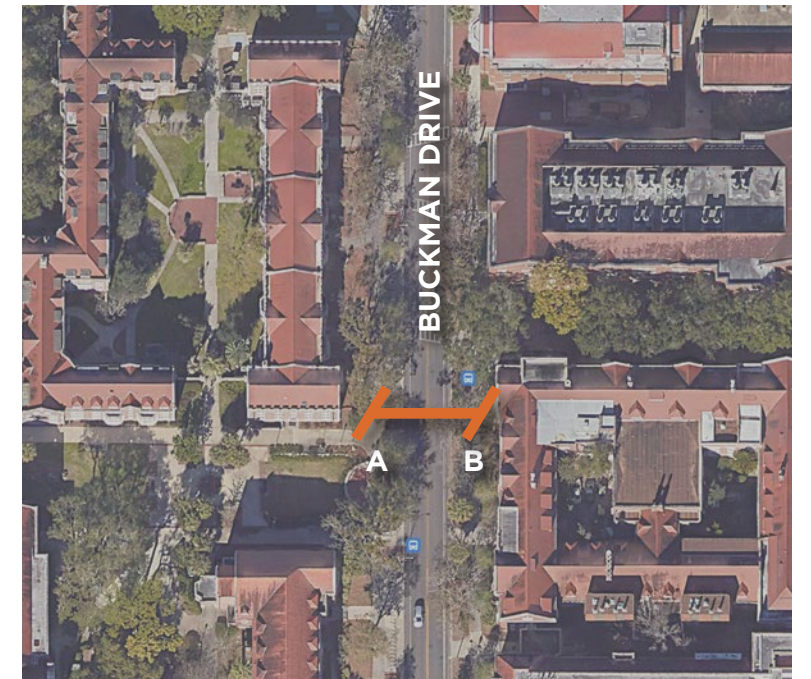
0' 5' 10'

PROPOSED TYPICAL PLAN VIEW



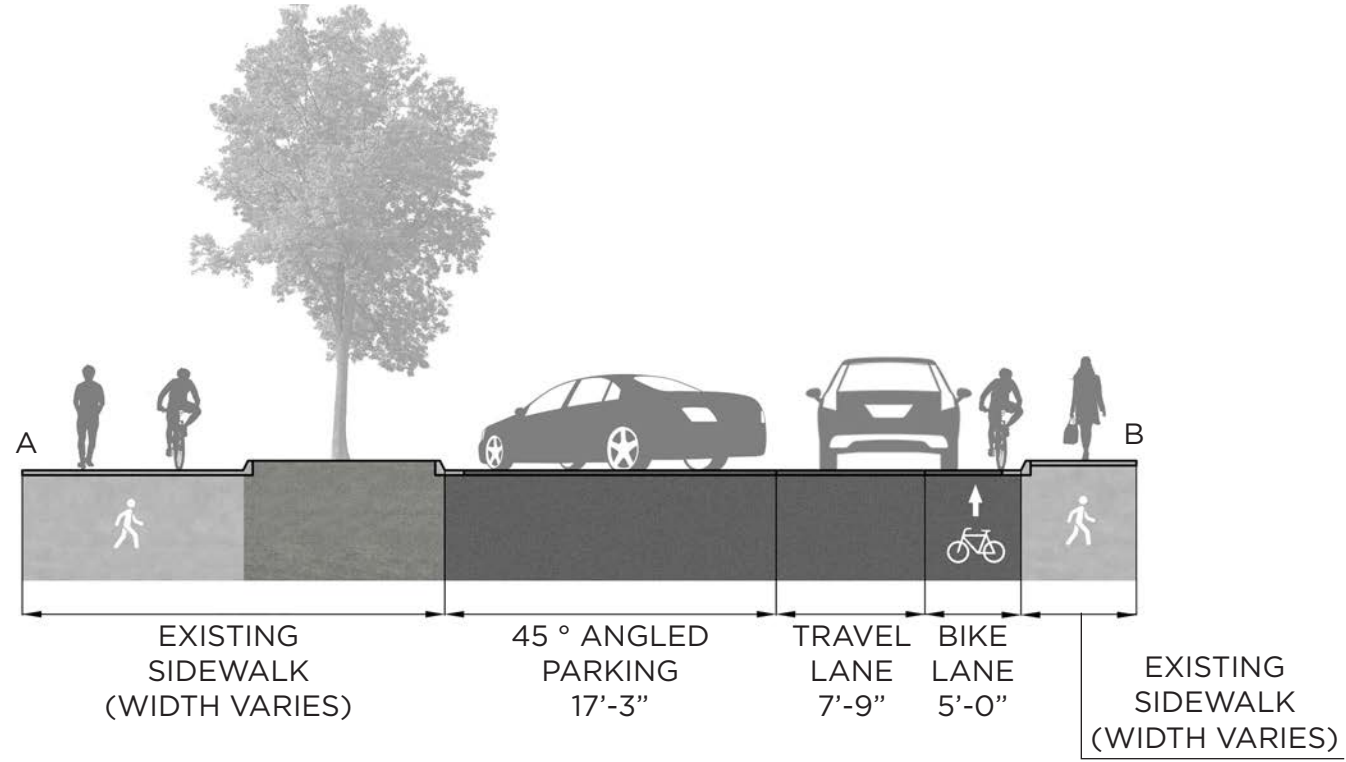
SCALE: N.T.S.

KEY MAP

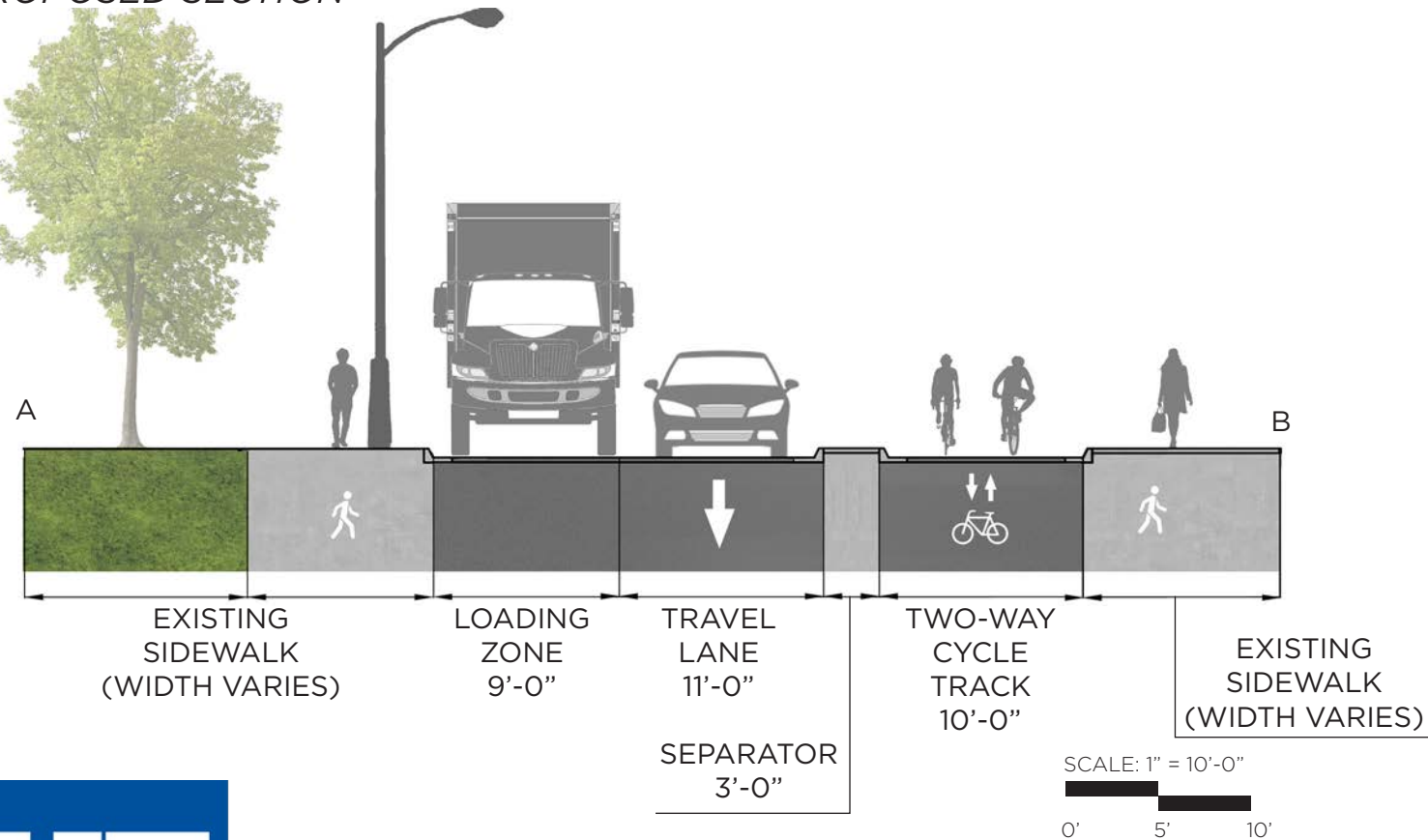


FLETCHER DRIVE | SEPARATOR/TWO-WAY CYCLE TRACK

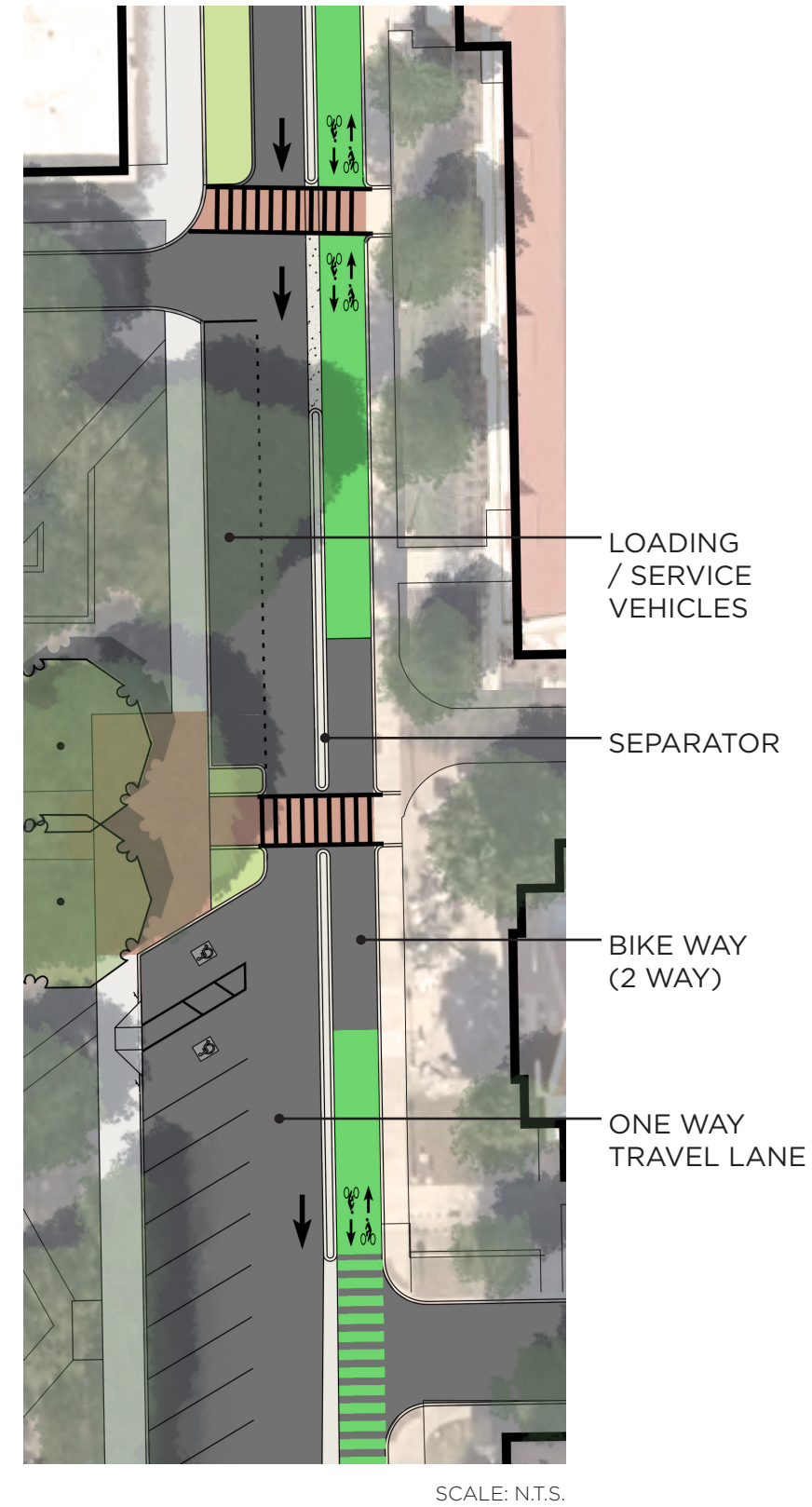
EXISTING SECTION



PROPOSED SECTION



PROPOSED TYPICAL PLAN VIEW



KEY MAP

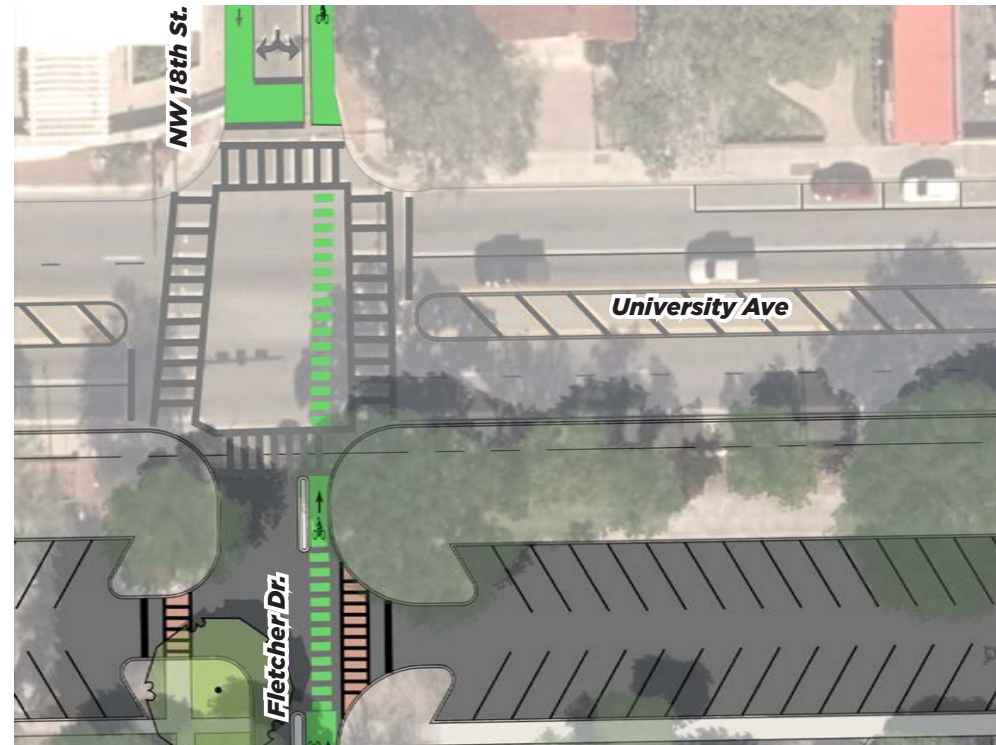


BUCKMAN DRIVE



STREET VIEW - NW 17TH STREET

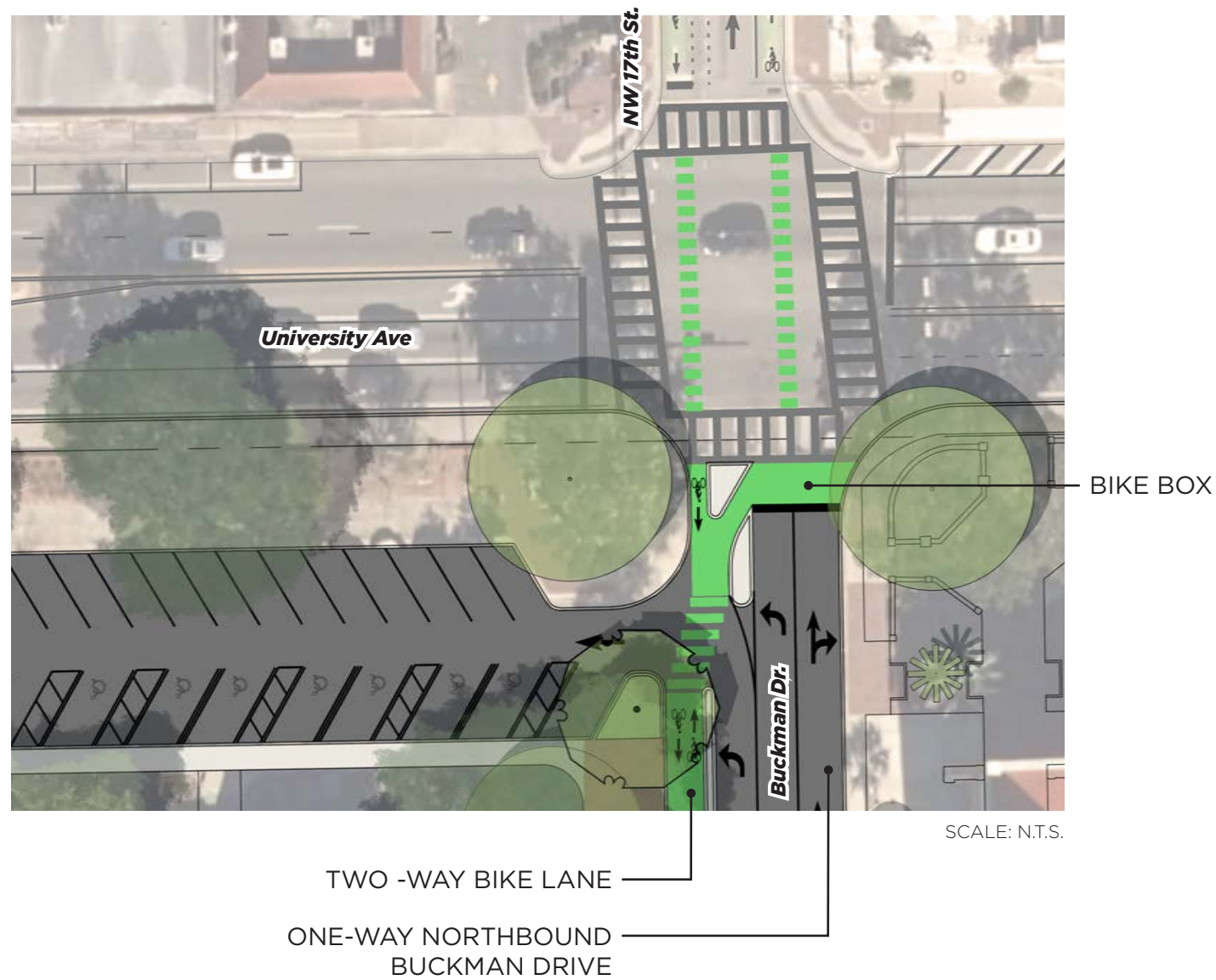
FLETCHER DRIVE



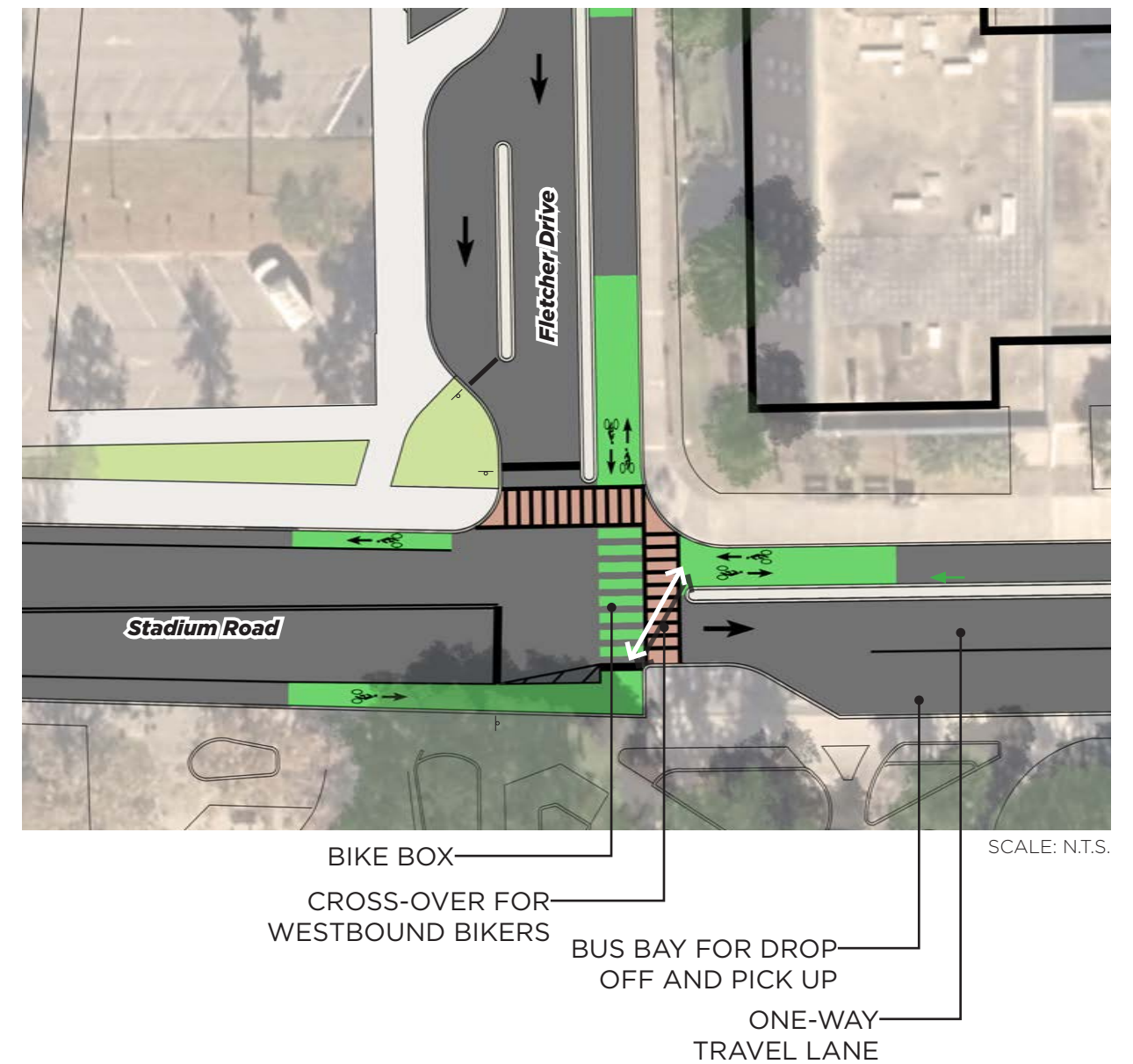
STREET VIEW - NW 18TH STREET



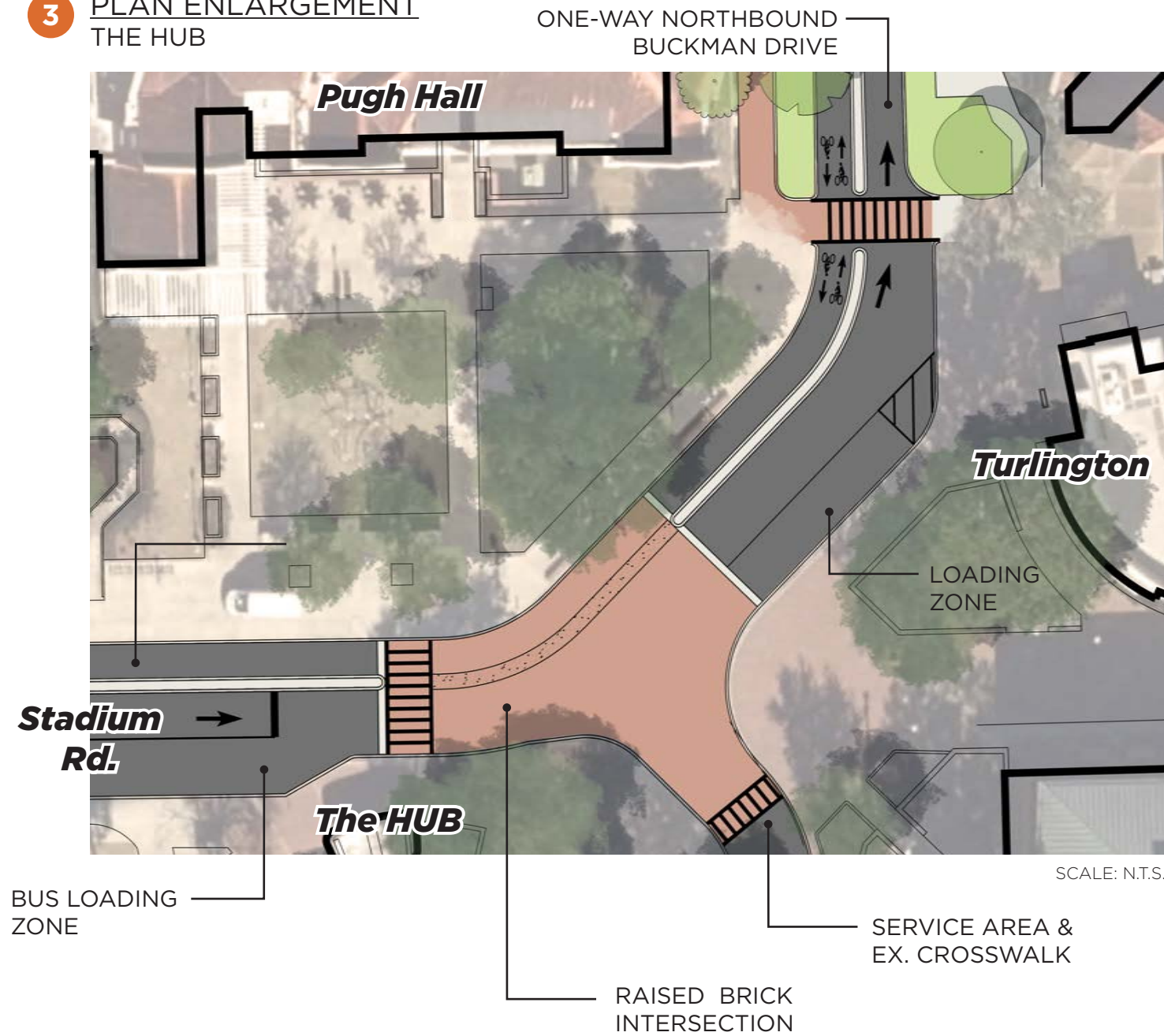
1 PLAN ENLARGEMENT
BUCKMAN DRIVE & UNIVERSITY AVE BIKE BOX



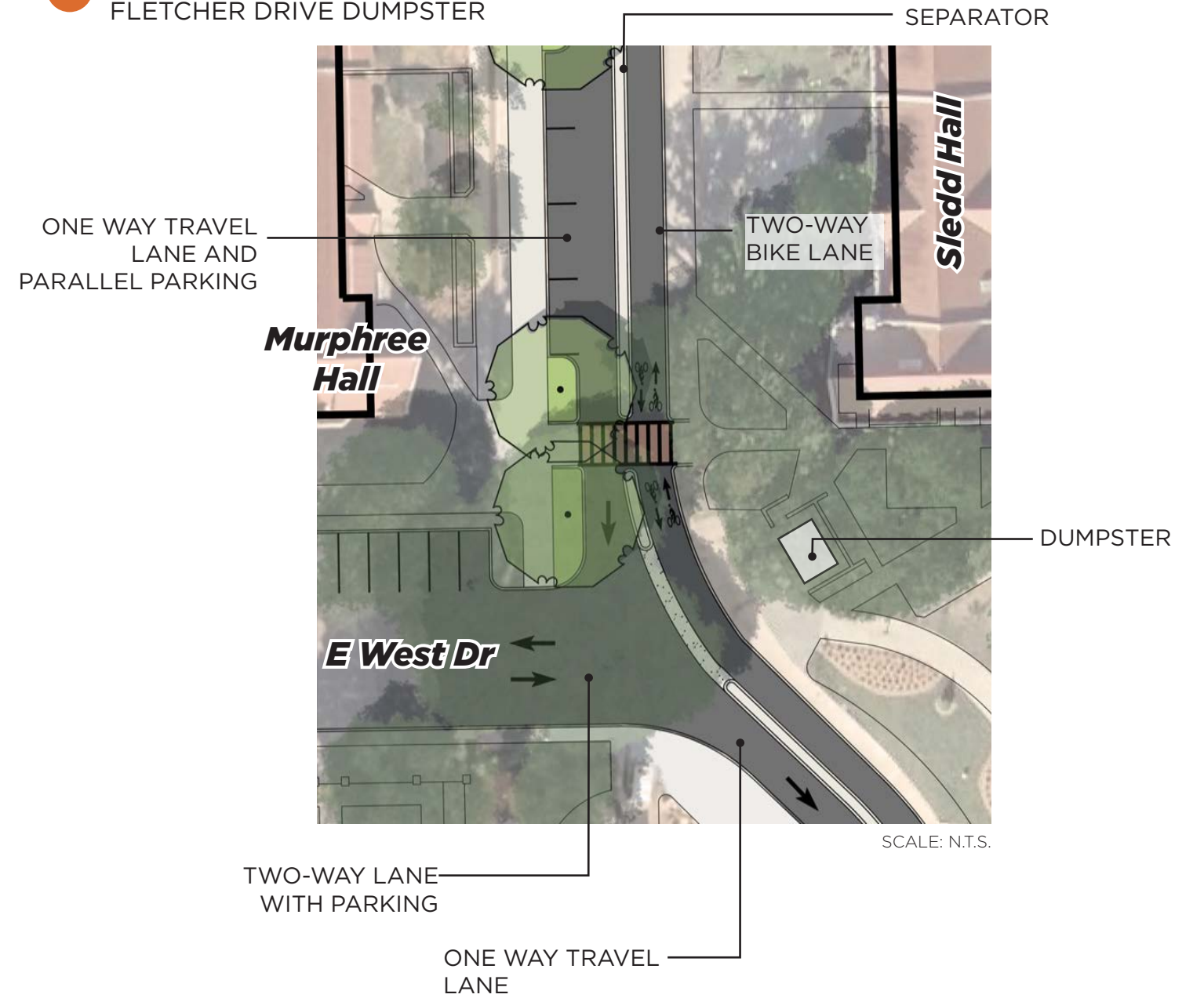
2 PLAN ENLARGEMENT
BUS HUB



3 PLAN ENLARGEMENT THE HUB



4 PLAN ENLARGEMENT FLETCHER DRIVE DUMPSTER



QUESTIONS & COMMENTS?



scan the
QR code
to provide
feedback

MP08578 BUCKMAN DRIVE & FLETCHER DRIVE

ONE WAY PAIRS STUDY & DESIGN

