

Reitz Union - Repair South Terrace Concrete and Seawall

MP07468

Construction Document
March 05, 2024

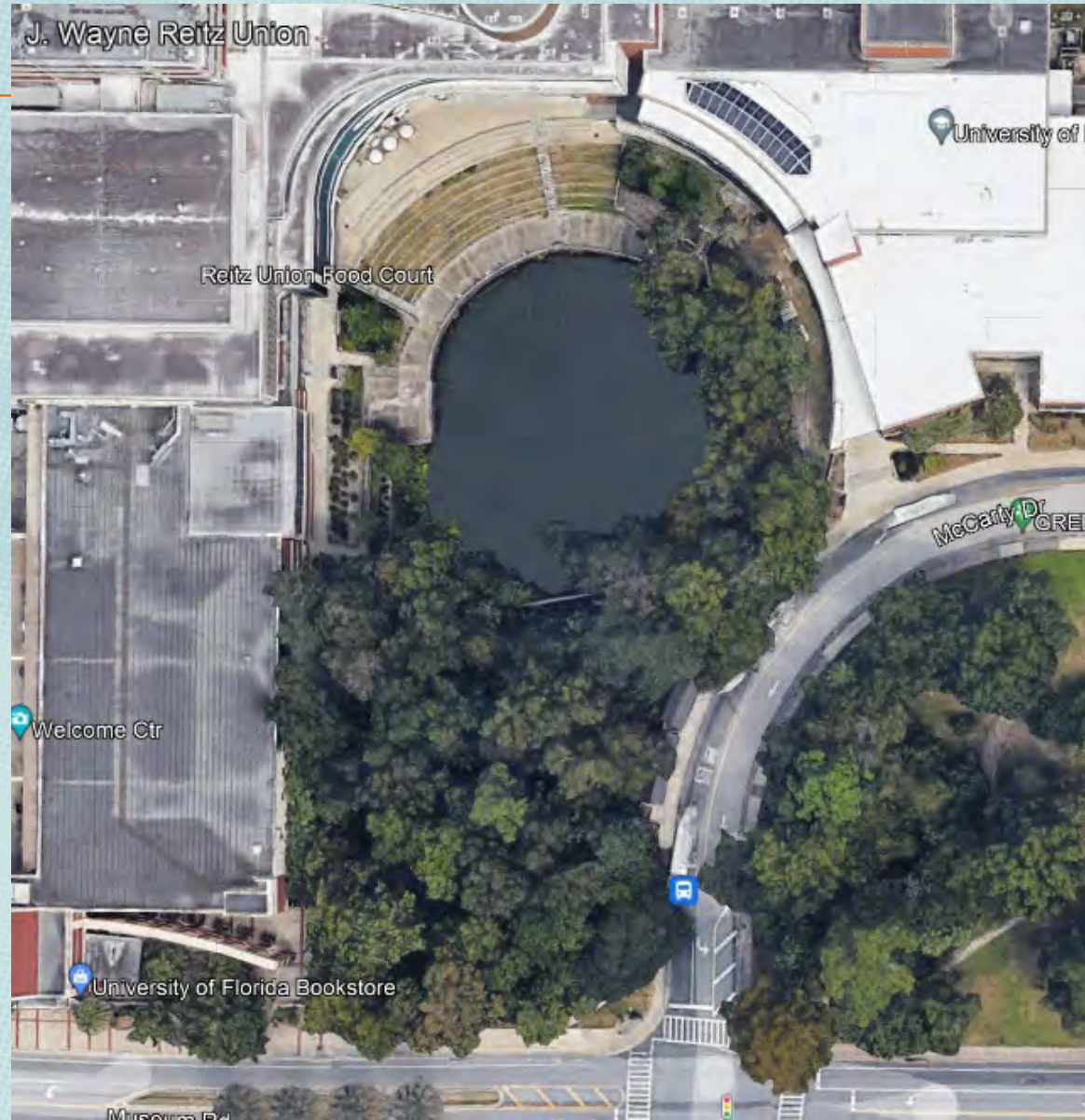
Project Manager : Stephen Caron



Project Location



Project Location (Enlarged)



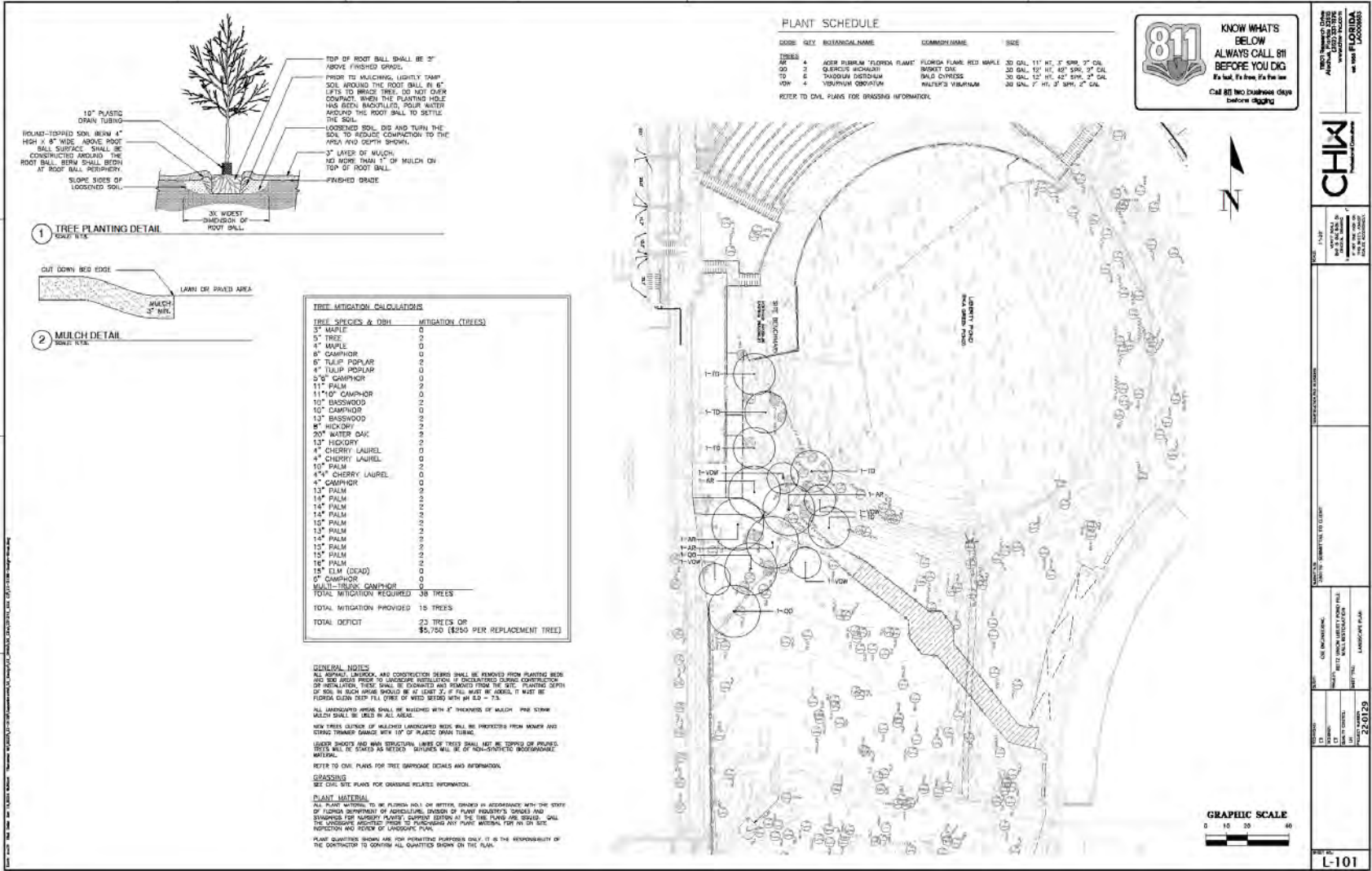
Project Overview

- The purpose of the following project is to repair/replace existing Liberty Pond seawall and south lower concrete terrace



[illegible]

Landscape Plan



A motion to approve the project as presented



MP08046 MCCARTY WOODS

FINAL CONCEPTUAL PLAN

MARCH 2024



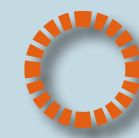
CONCEPTUAL PLAN



CONCEPTUAL WAYFINDING PLAN



LEGEND



KIOSK



INTERPRETIVE SIGN



TRAIL MARKER



BOUNDARY MARKER

REFER TO THE CAMPUS TRAILS
MASTER PLAN FOR MORE
INFORMATION ON UF TRAILS.



KIOSK



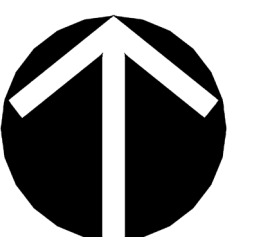
INTERPRETIVE SIGN



INTERPRETIVE SIGN



TRAIL MARKER

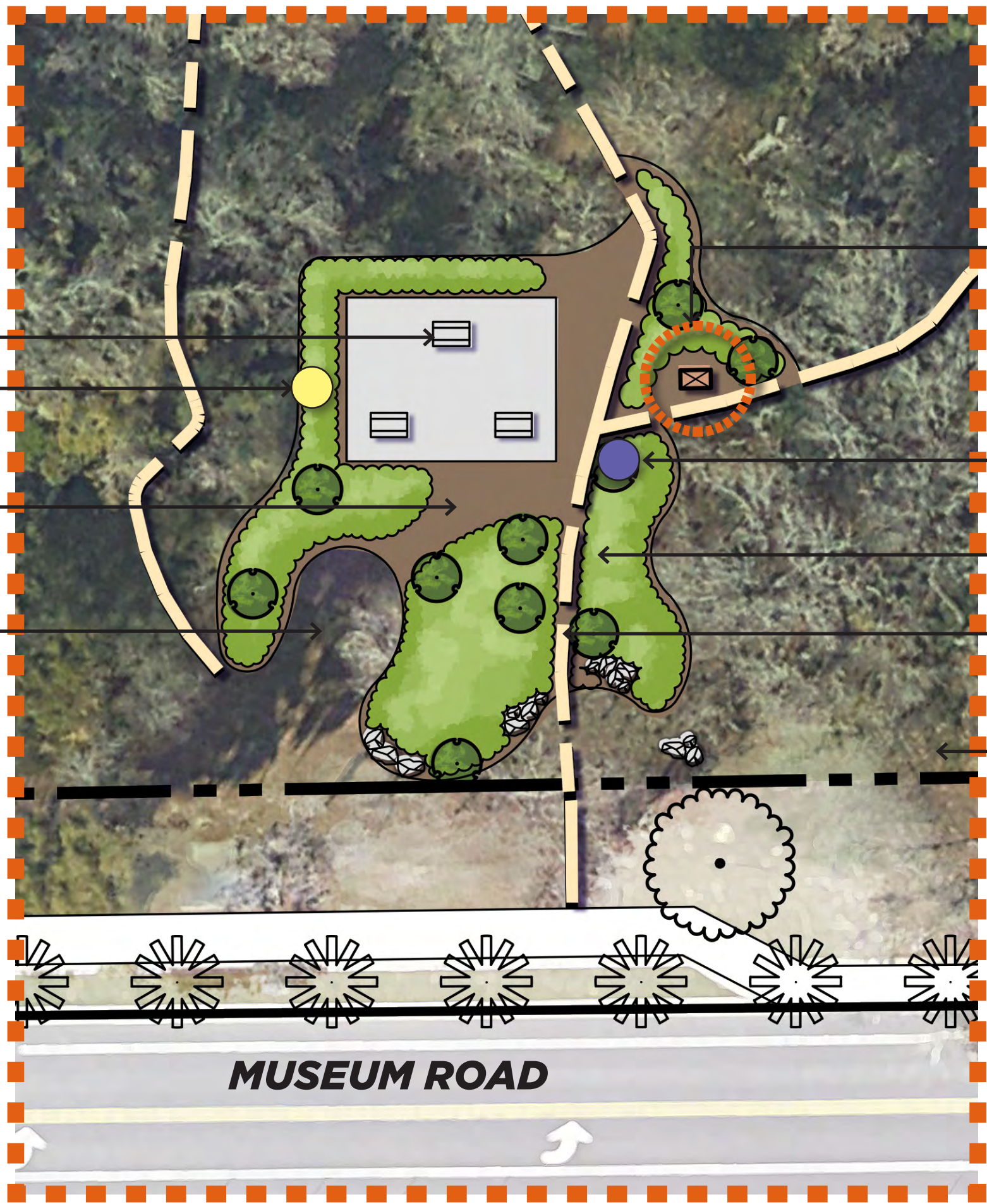


NORTH



CONCEPTUAL PLAN ENLARGEMENTS

- WHEN FUNDS PERMIT, REMOVE ALL CONCRETE PICNIC TABLES AND REPLACE WITH UF LSMP STANDARD TABLES & BENCHES.
- INTERPRETIVE SIGN
- PINE STRAW MULCH (TYP.)
- PROPOSED UNDERSTORY TREE (TYP.)



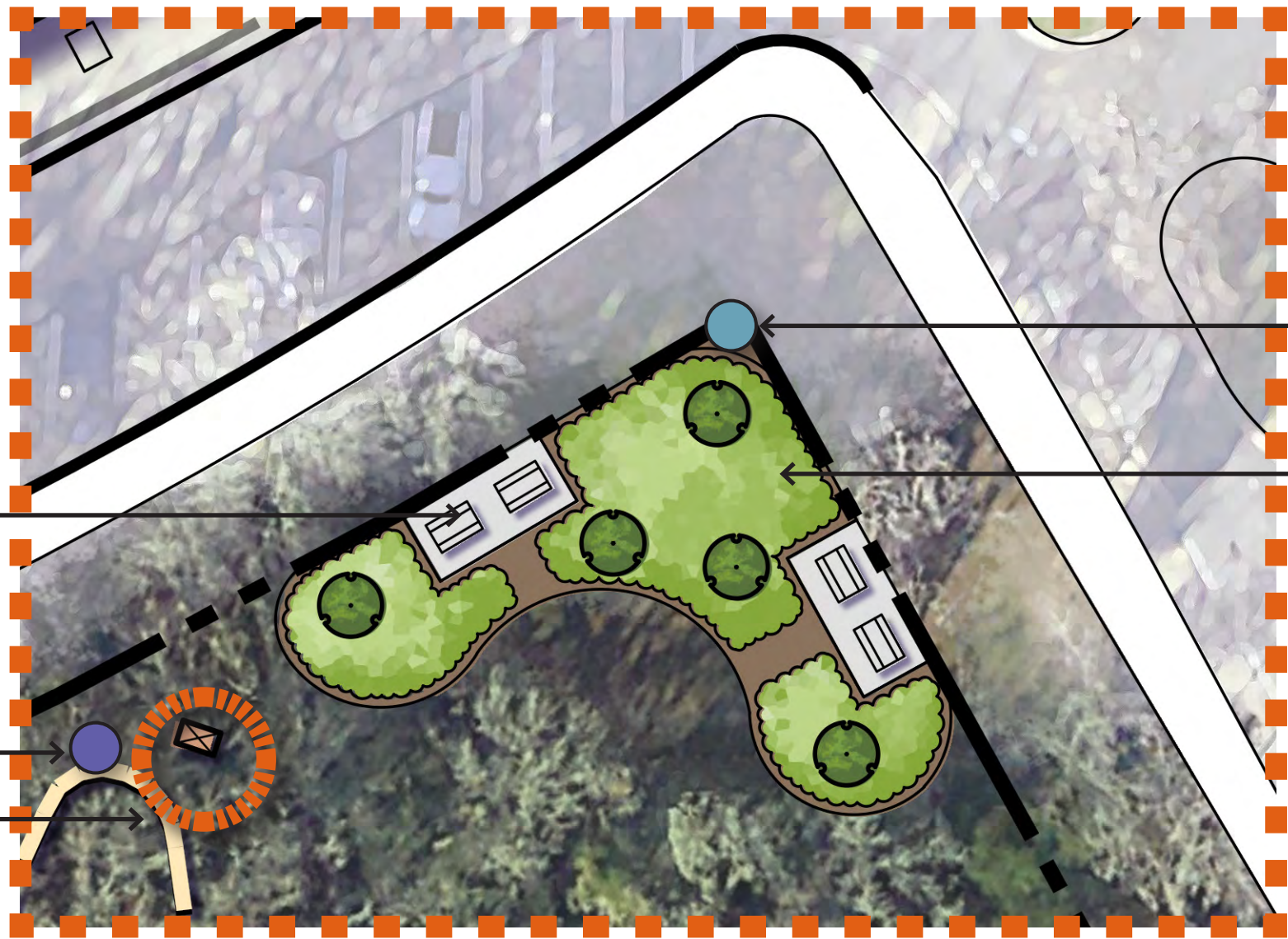
SITE PLAN LANDSCAPE ENLARGEMENT AREA 'A'
SCALE: 1" = 20'-0"

- EXISTING KIOSK, TO REMAIN AND BE REPAIRED OR TO BE REPLACED
- TRAIL MARKER
- PROPOSED SHRUBS & GROUNDCOVERS (TYP.)
- EXISTING TRAILS TO REMAIN (TYP.)
- LANDSCAPE BOULDERS TO DELINEATE MOW EDGE

WHEN FUNDS PERMIT, REMOVE ALL CONCRETE PICNIC TABLES AND REPLACE WITH UF LSMP STANDARD TABLES & BENCHES.

PROPOSED TRAIL
(SEE PAVING OPTIONS)

- ADD NEW CONCRETE PADS WITH UF LSMP STANDARD TABLES & BENCHES.
- TRAIL MARKER, TYP.
- EXISTING KIOSK, TO REMAIN AND BE REPAIRED OR TO BE REPLACED



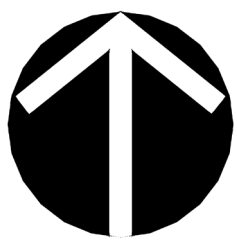
SITE PLAN LANDSCAPE ENLARGEMENT AREA 'B'
SCALE: 1" = 20'-0"

- BOUNDARY MARKER POST (TYP.), AROUND CONSERVATION AREA BOUNDARY
- PROPOSED SHRUBS & GROUNDCOVERS (TYP.)



SITE PLAN ENLARGEMENT AREA 'C'
SCALE: 1" = 20'-0"

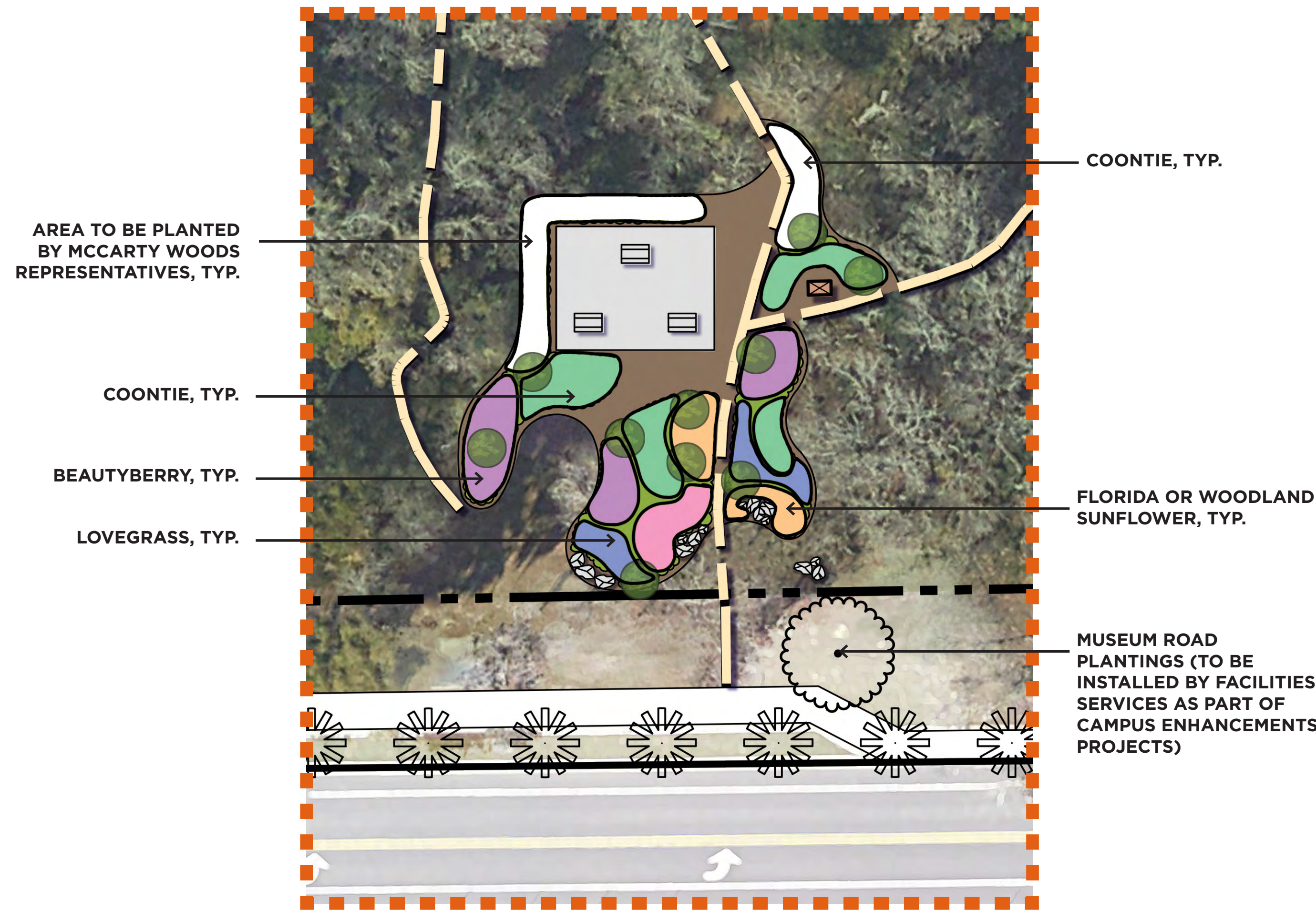
- EXISTING CONCRETE SIDEWALK TO REMAIN (TYP.)
- INTERPRETIVE SIGN, TYP.
- BOUNDARY MARKER POST (TYP.), AROUND CONSERVATION AREA BOUNDARY
- PROPOSED LANDSCAPE MASTER PLAN BENCH
- PROPOSED UNDERSTORY TREE (TYP.)
- PROPOSED CONCRETE WALK, 6' WIDTH
- TRAIL MARKER, TYP.
- PROPOSED KIOSK
- PROPOSED LANDSCAPE PLANTINGS, SEE PLANT PALETTE FOR MORE INFORMATION (TYP.)



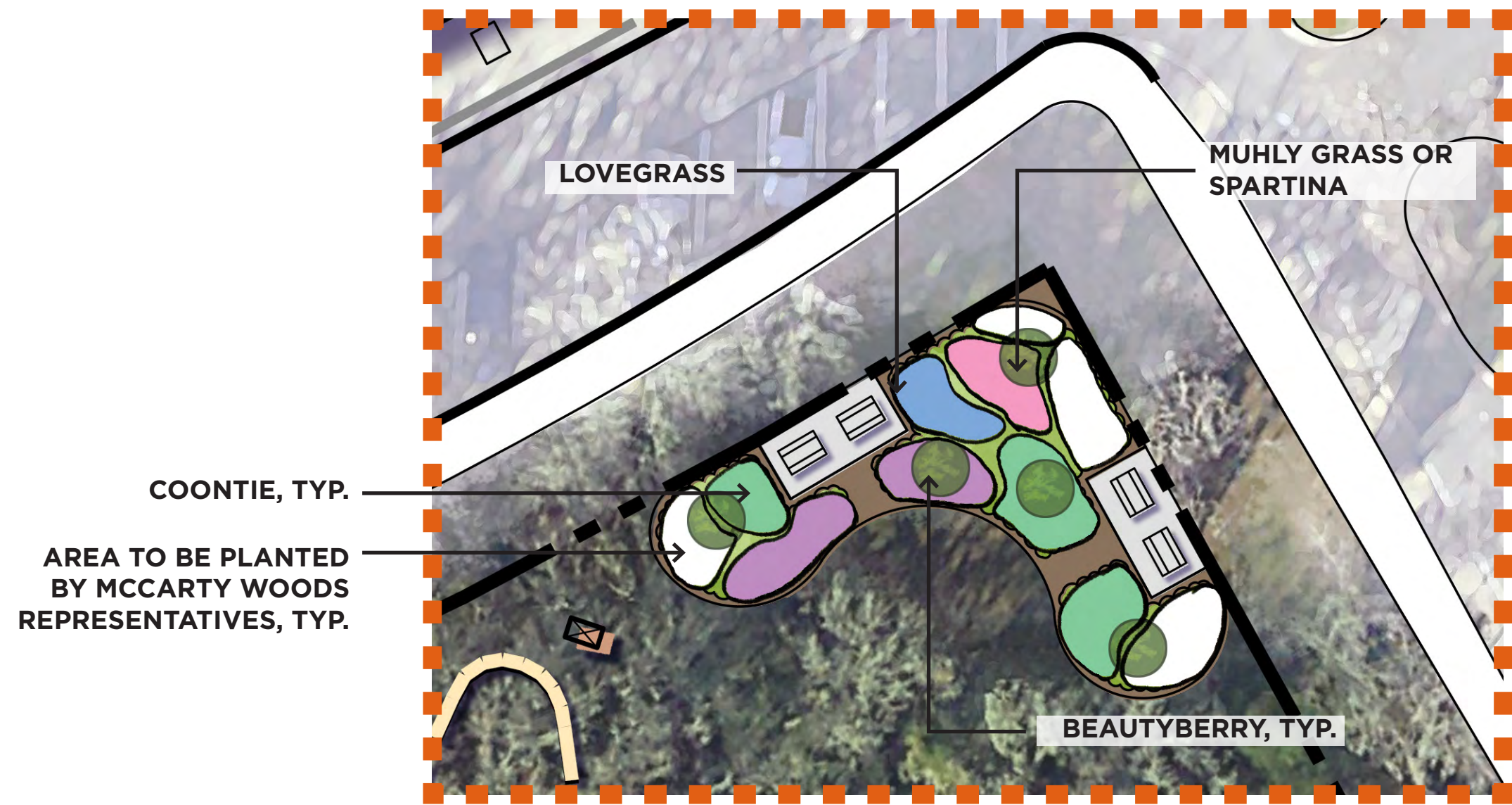
NORTH



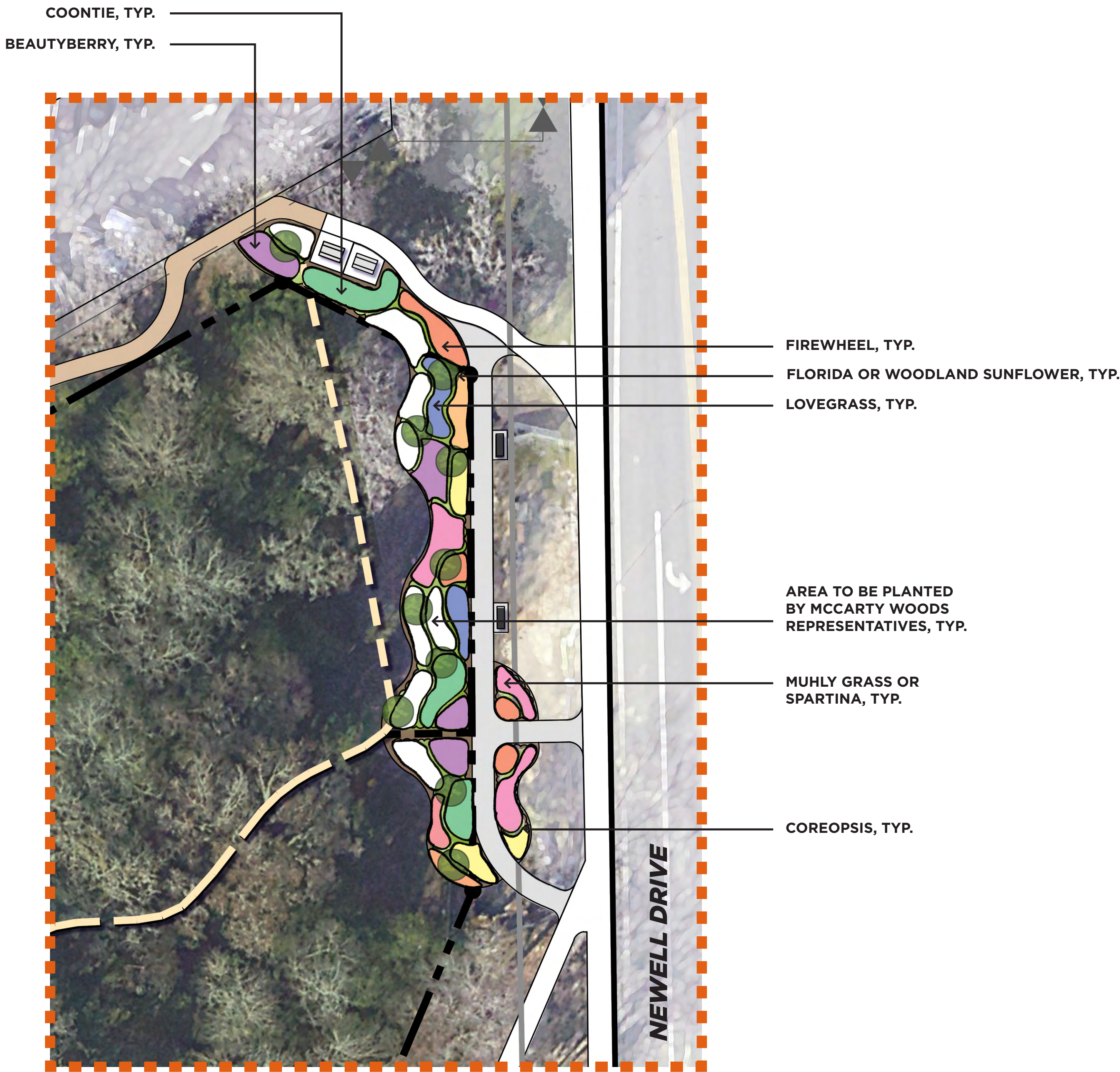
CONCEPTUAL PLANTING PLAN ENLARGEMENTS



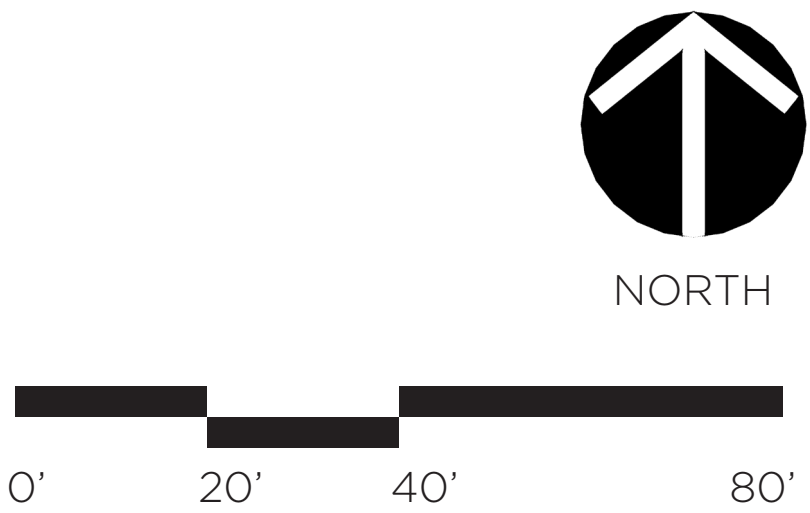
SITE PLAN LANDSCAPE ENLARGEMENT AREA 'A'
SCALE: 1" = 20'-0"



SITE PLAN LANDSCAPE ENLARGEMENT AREA 'B'
SCALE: 1" = 20'-0"



SITE PLAN LANDSCAPE ENLARGEMENT AREA 'C'
SCALE: 1" = 20'-0"



SITE FURNISHINGS



PICNIC TABLE (PROPOSED)
TYPE: TABLE & BENCHES
COLOR: BLACK
MANUFACTURER: KEYSTONE RIDGE

(LANDSCAPE MASTER PLAN STANDARD)



PICNIC TABLE (EXISTING/TEMPORARY)
TYPE: CONCRETE PICNIC TABLE, TO MATCH EX.

COLOR: n/a
MANUFACTURER: n/a



BENCH
TYPE: PULLMAN P28C (BACKED)
COLOR: BLACK
MANUFACTURER: KEYSTONE RIDGE

(LANDSCAPE MASTER PLAN STANDARD)



BOUNDARY MARKER POST
TYPE: 4"X4"X36" CONCRETE POST WITH BEVELED CHAMFER EDGE

COLOR: N/A
MANUFACTURER: N/A

PAVING OPTIONS



FLEXIPAVE
COST = ~\$12 PER S.F.



CONCRETE
COST = ~\$6 PER S.F.



CONCRETE FINES
COST = ~\$5 PER S.F.

PROPOSED PLANT PALETTE

TREES & LARGE SHRUBS



Pignut Hickory
Carya glabra



Swamp Chestnut Oak
Quercus michauxii



Sweetgum*
Liquidambar styraciflua



Green Ash*
Fraxinus pennsylvanica



Fringetree
Chionanthus virginicus



Muscle Wood*
Carpinus caroliniana



Redbud
Cercis canadensis



Beautyberry
Callicarpa americana



Coral Bean*
Erythrina herbacea



Carolina Buckthorn*
Frangula caroliniana



Hog Plum*
Prunus umbellata



Pawpaw*
Asimina parviflora



Tree Lyonia*
Lyonia ferruginea

**Not in UF Landscape Master Plan*

PROPOSED PLANT PALETTE

SMALL SHRUBS & GROUNDCOVERS



Sand Cordgrass
Spartina bakeri



Coontie
Zamia floridana



Dwarf Fakahatchee Grass
Tripsacum floridanum



Pink Muhly
Muhlenbergia capillaris



Ironweed*
Vernonia gigantea



Scarlet Salvia*
Salvia coccinea



Bluestem*
Andropogon glomeratus



Lovegrass*
Eragrostis



Florida Sunflower*
Helianthus floridanus



Woodland Sunflower*
Helianthus strumosus



Silkgrass*
Pityopsis graminifolia



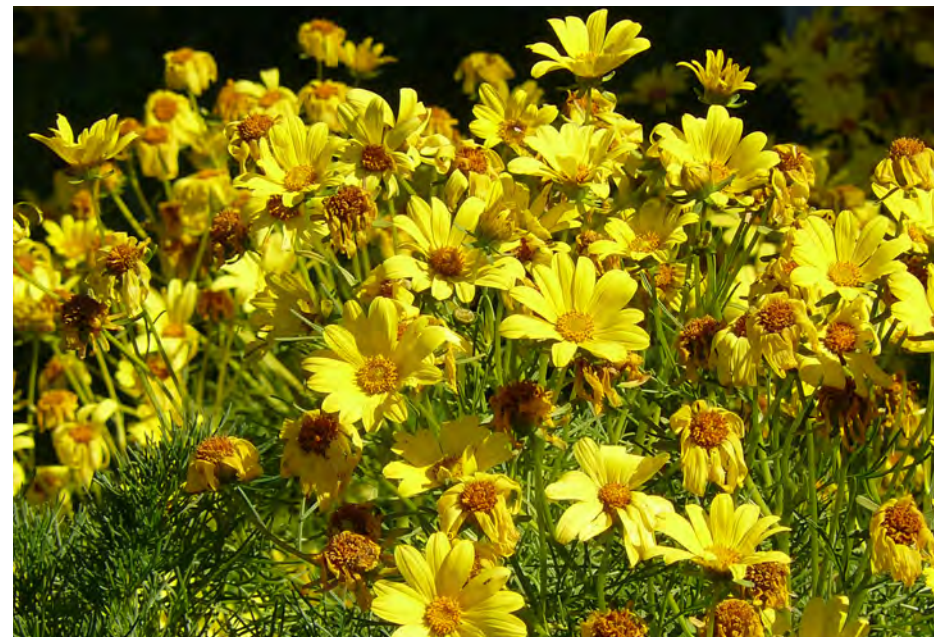
Milkweed*
Asclepias tuberosa



Florida Paintbrush*
Carphephorus corymbosus



Beebalm*
Monarda punctuata



Coreopsis*
Coreopsis leavenworthii



Partridge Pea*
Chamaecrista fasciculata



Firewheel*
Gaillardia pulchella

*Not in UF Landscape Master Plan



February 1, 2024
Facilities Services



Landscaping and Natural Resource Projects

Maintaining the aesthetics and functions of our natural areas

Current Projects

Tigert Circle

- Work within circle nearing completion.
- Phase III of project at Gerson Hall to commence soon. Timeline for completion is approximately six weeks.



Project Planning

- Stormwater Master Plan process approaching stage of project prioritization.
- Consulting session has been completed with Claire Lewis from Florida-Friendly Landscaping to create a plan for Malachowsky Hall. Plan is being developed to utilize a variety of native species.