

---

*Updated January 2024*  
*PRESERVATION OF HISTORIC BUILDINGS & SITES*



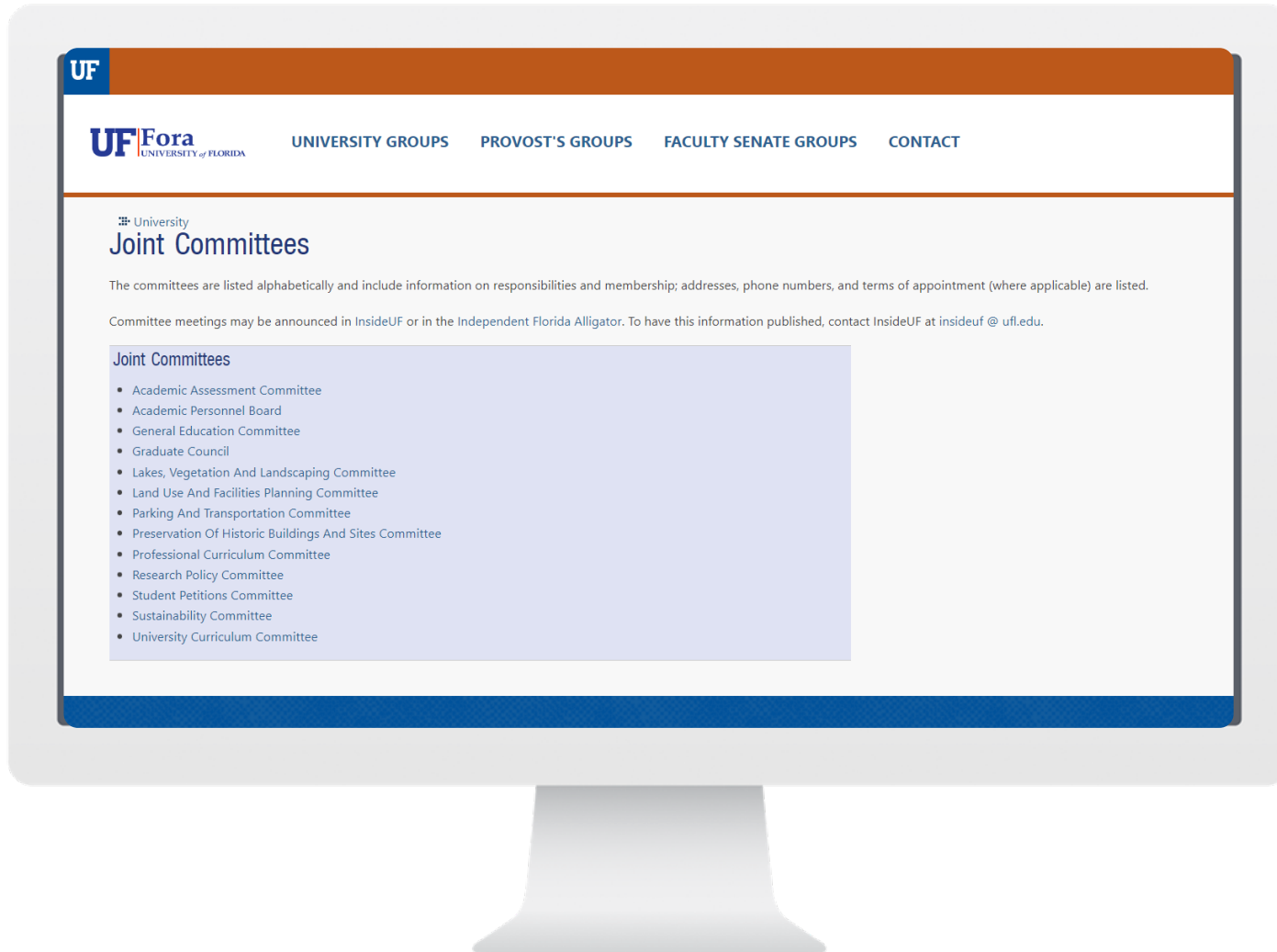
# COMMITTEE ORIENTATION



**BUILDING FOR THE  
GATOR GOOD**

PLANNING•DESIGN•CONSTRUCTION

## WHY DOES UF HAVE COMMITTEES?



### 1 SHARED GOVERNANCE

Shared governance is a system of dual authority and responsibility, constitutionally created, in which administrators and faculty participate in the decision and policy making process.

### 2 PARTICIPATION

Serving on University Councils and Committees is the primary means of direct participation in University governance.

### 3 RECOMMENDATIONS

Committees are the vehicles for providing recommendations to the UF Faculty Senate & UF President. **The PHB&S Committee makes recommendations directly to the VP of Business Affairs.**

## COMMITTEE ROLES & RESPONSIBILITIES

# PRESERVATION OF HISTORIC BUILDINGS & SITES

- Assists the University in implementing policies regarding Historic Preservation and fulfilling its state obligations with respect to its historic and archaeological resources.
- Provides input on preserving historic character in rehabilitation projects or, alternatively, incorporating historic elements into new construction to ensure compatibility with the character of the historic district or historic impact area.
- Provides recommendations to the VP of Business Affairs for construction on campus, focusing on historic building design, archaeological resources and policy compliance.

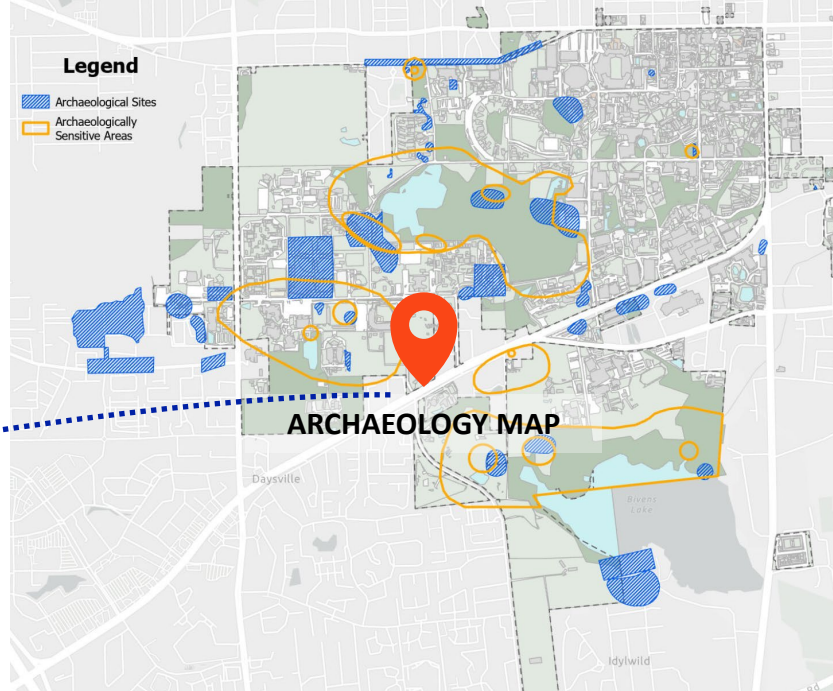
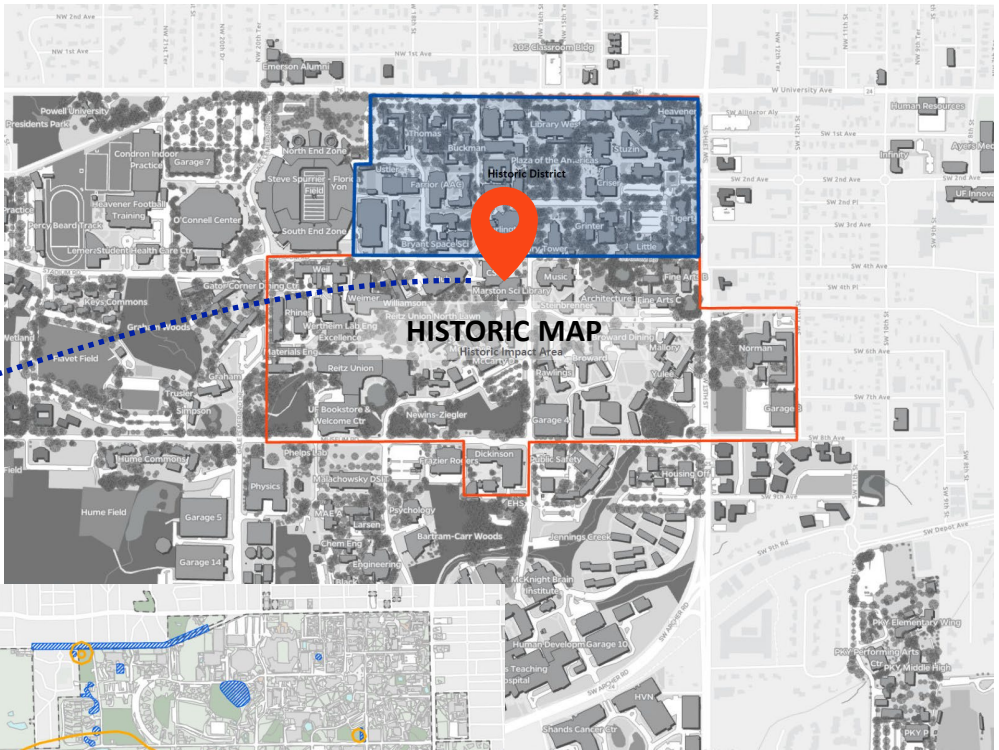


COMMITTEE ORIENTATION

# PRESERVATION OF HISTORIC BUILDINGS & SITES

The PHB&S is tasked with reviewing projects that:

- Impact buildings that are in, or have been deemed eligible for inclusion in, the **National Register of Historic Places**
- Major projects that impact known **archaeological sites** or **sensitivity zones**
  
- UF has 31 buildings and one outdoor space, the Plaza of the Americas, on the **National Register of Historic Places**.
  
- Additionally, the campus has known **archeological sites**, as well as identified areas of **archaeological sensitivity**.





***PRESERVATION OF HISTORIC  
BUILDINGS & SITES COMMITTEE***

## **COMMITTEE INFORMATION:**

The PHB&S committee has **14 faculty members**, five appointed by the president and seven elected by the Senate from the faculty at large, plus two non-voting student members. The University Archivist and the Director of Preservation Programs are voting members.

The committee meets the **3<sup>rd</sup> Tuesday of the month at 2pm.**

Currently, our committee meetings are hosted on Zoom.

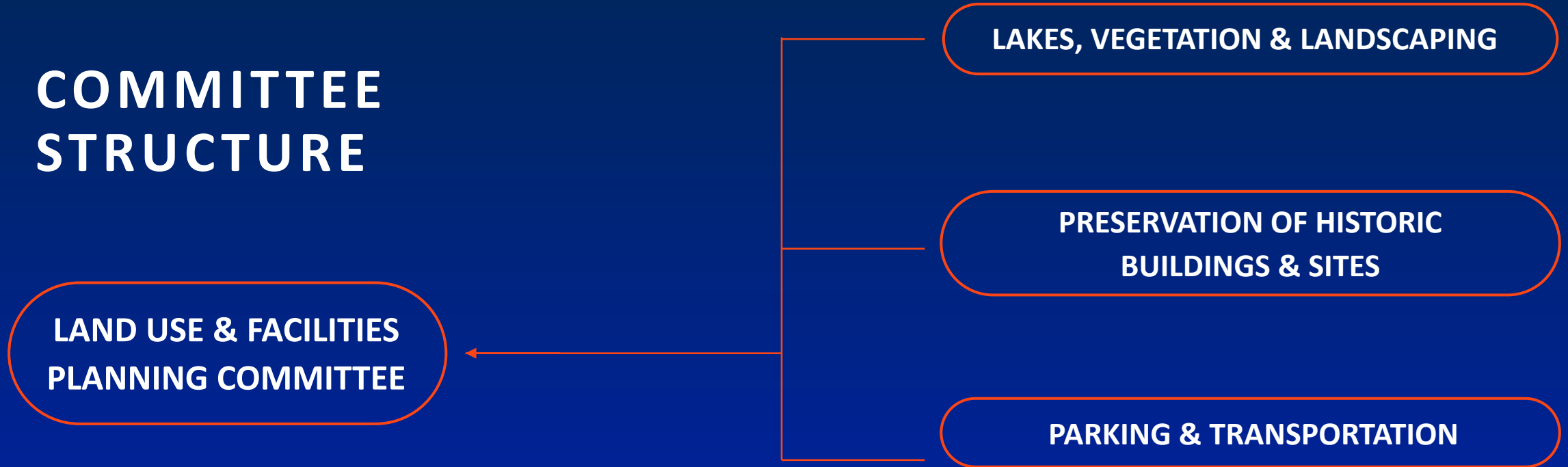
The agenda and presentations are provided a week in advance of the meeting and are also published to the Committee's website.

---

### **Website:**

- <https://facilities.ufl.edu/campus-planning/committees/preservation-of-historic-buildings-and-sites-committee/>

# COMMITTEE STRUCTURE



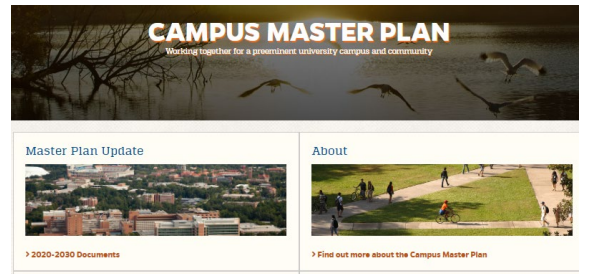
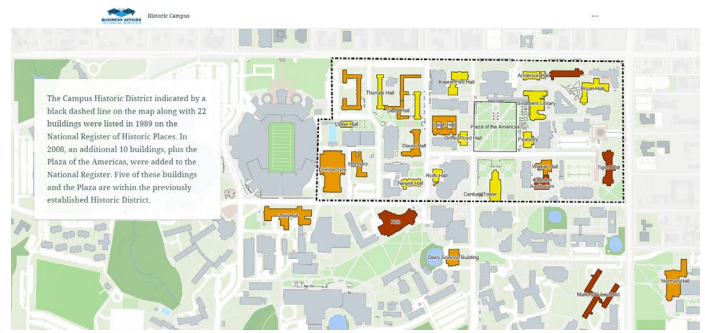
- Projects attend the Lakes, Vegetation & Landscaping Committee, Preservation of Historic Buildings and Sites and the Parking & Transportation Committee prior to attending the Land Use & Facilities Planning Committee.
- The **PHB&S Committee** provides input to the Land Use and Facilities Planning Committee with respect to the committee's findings on a project's historic and archaeological resources.

## Major and Minor Projects

- The PHB&S Committee will review Major and Minor construction projects.
- A **minor project** is a project with a budget less than \$4,000,000
- A minor project may only need to come to the committee one time for review
- A **major project** is a project with a budget greater than \$4,000,000

## Related Sources

- Committee Members should be familiar with the following resources:
  - The [Campus Master Plan](#)
  - The [Campus Design Guidelines](#)
  - The [Historic Campus StoryMap](#)
  - The [Historic Preservation Planning Website](#)



A MAJOR PROJECT WILL  
COME THROUGH THE  
COMMITTEE THREE TIMES

# COMMITTEE SCHEDULE (BY PROJECT PHASE)

## PROGRAMMING

- Site Selection
- Review of Existing Conditions
- Site Constraints
- Architectural & Design Considerations



## SCHEMATIC DESIGN

- Building Footprint
- Proposed Materials
- Renderings
- Compatibility with Campus Design Guidelines

## CONSTRUCTION

- Potential Changes or Unforeseen Impacts
- Finalized Building Design





## COMMITTEE ORIENTATION

### Bylaws of the Faculty Senate & Florida Sunshine Laws

- Committee Members should be familiar with the [Bylaws of the Faculty Senate](#)
  - Joint committees are subject to [The “Sunshine” Law](#)
- [The Sunshine Law](#) provides a **right to access** to governmental proceedings at both the state and local levels.
- [The Sunshine Law](#) applies to any gathering of two or more members of the same board discussing a matter which will foreseeably come before that board for action.

**Committee members must not discuss committee matters outside of the public meeting setting.**

## PRESERVATION OF HISTORIC BUILDINGS & SITES

- **Additional information may be found on the committee webpage.**  
<https://facilities.ufl.edu/campus-planning/committees/preservation-of-historic-buildings-and-sites-committee/>
- **For meeting information and other general questions, please contact Rachel Mandell or call the main PDC phone number:**  
[r.mandell@ufl.edu](mailto:r.mandell@ufl.edu)  
352-273-4000