
Updated December 2023
LAKES, VEGETATION & LANDSCAPING



COMMITTEE ORIENTATION



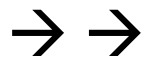
**BUILDING FOR THE
GATOR GOOD**

PLANNING•DESIGN•CONSTRUCTION

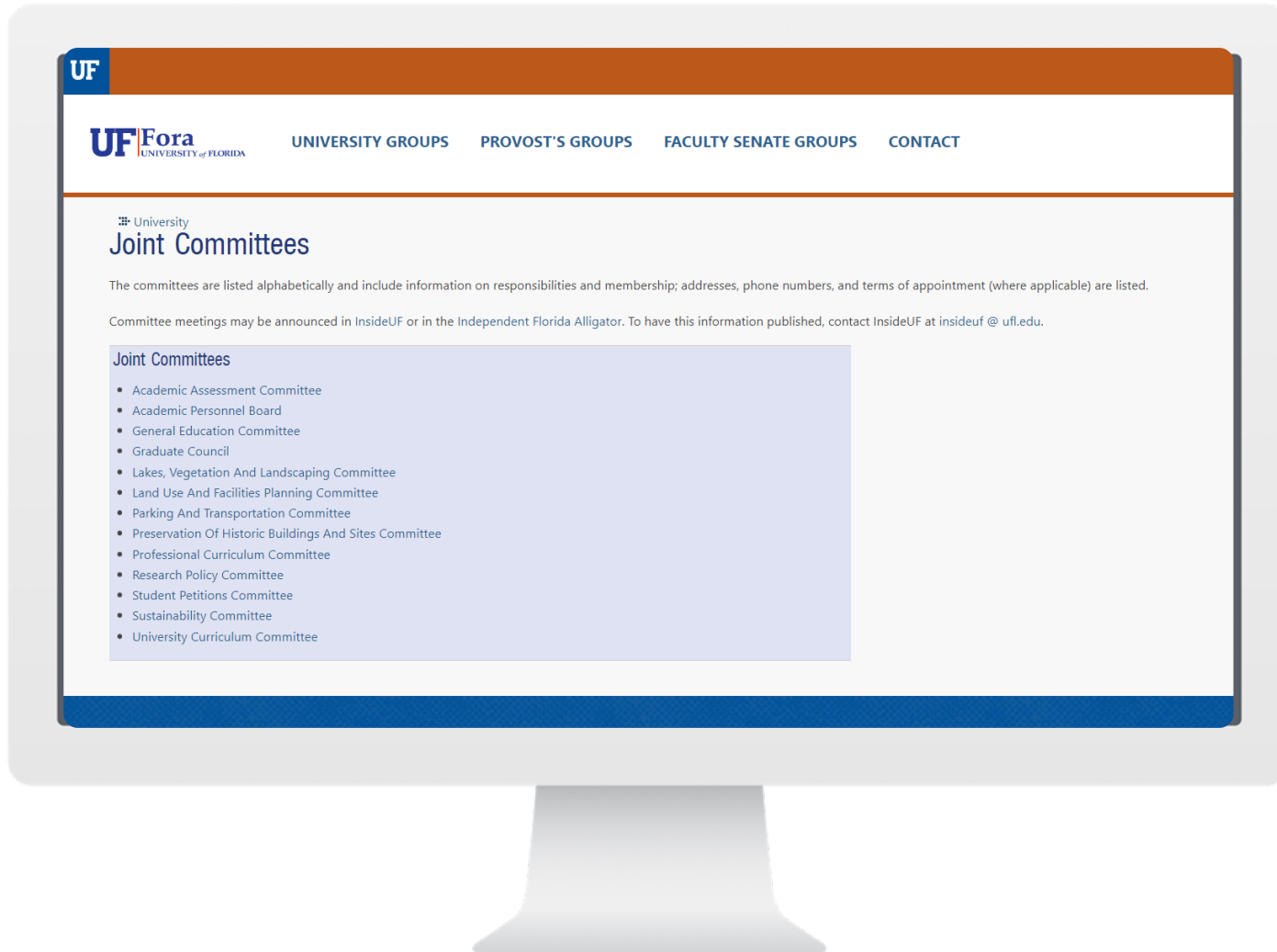
COMMITTEE ORIENTATION

Lakes, Vegetation & Landscaping

- Provides recommendations concerning the enforcement of policies regarding the removal of trees and other vegetation, the Landscape Master Plan and Campus Master Plan
- Provides guidelines for the use of campus lakes, creeks and ponds in order to preserve their ecological integrity and research capabilities, and the management and well being of natural areas containing non-domesticated plants and animals.
- Provides input on major landscape elements, such as green space and significant landscape architectural features.
- Provides recommendations to the VP of Business Affairs for construction on campus, focusing on site suitability and tree impacts.



WHY DOES UF HAVE COMMITTEES?



1 SHARED GOVERNANCE

Shared governance is a system of dual authority and responsibility, constitutionally created, in which administrators and faculty participate in the decision and policy making process.

2 PARTICIPATION

Serving on University Councils and Committees is the primary means of direct participation in University governance.

3 RECOMMENDATIONS

Committees are the vehicles for providing recommendations to the UF Faculty Senate & UF President. **The LVL Committee makes recommendations directly to the VP of Business Affairs.**



LAKES, VEGETATION & LANDSCAPING COMMITTEE

COMMITTEE INFORMATION:

The LVL committee has **10 faculty members**, five appointed by the president and five elected by the Senate from the faculty at large, plus one student member.

The committee meets the **1st Thursday of the month at 9am.**

Currently, our committee meetings are hosted on Zoom.

The agenda and presentations are provided a week in advance of the meeting and are also published to the LVL Committee website.

Website:

- <https://facilities.ufl.edu/campus-planning/committees/lakes-vegetation-and-landscaping-committee/>



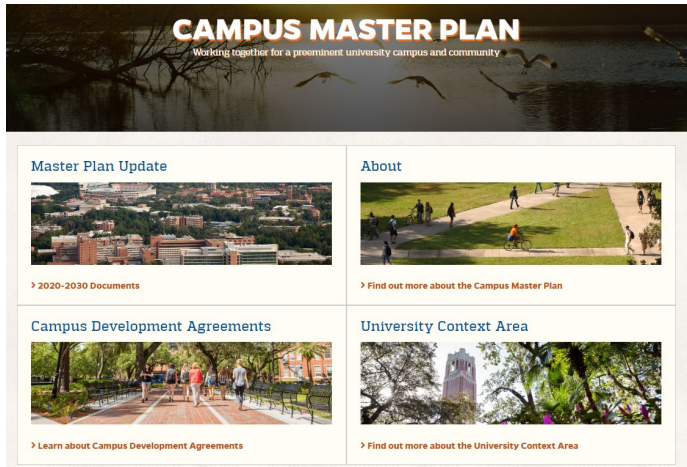
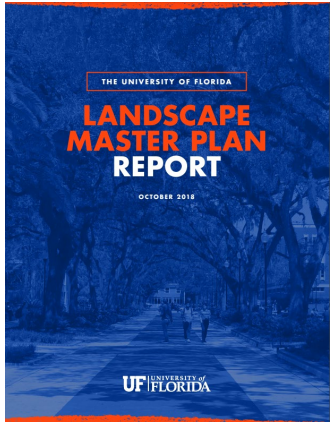
COMMITTEE ORIENTATION

Major and Minor Projects

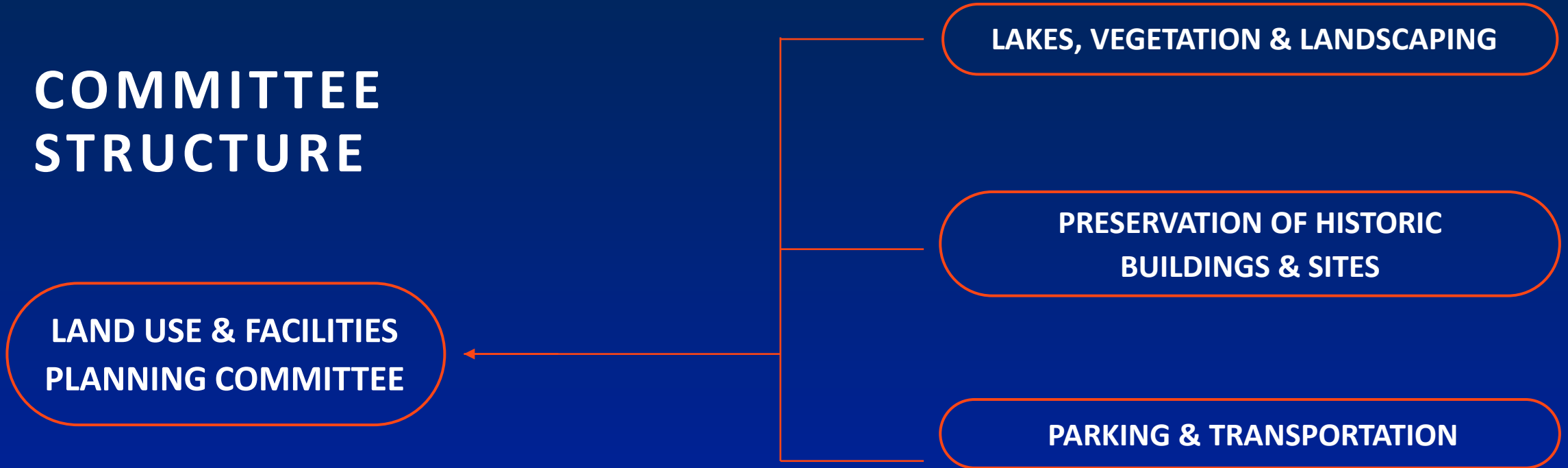
- The LVL Committee will review Major and Minor construction projects.
- A **minor project** is a project with a budget less than \$4,000,000
- A minor project may only need to come to the committee one time for review
- A **major project** is a project with a budget greater than \$4,000,000

Related Sources

- Committee Members should be familiar with the following documents:
- The [Landscape Master Plan](#)
- The [Campus Master Plan](#)
- The [Tree Mitigation Policy](#)
- The [Design & Construction Standards](#)



COMMITTEE STRUCTURE



- Projects attend the Lakes, Vegetation & Landscaping Committee, Preservation of Historic Buildings and Sites and the Parking & Transportation Committee prior to attending the Land Use & Facilities Planning Committee.
- The LVL Committee provides input to the University Land Use and Facilities Planning Committee regarding planning of major landscape elements such as green space, open space, and significant architectural features to ensure their compatibility with existing and planned landscaping and master planning.

A MAJOR PROJECT WILL
COME THROUGH THE
COMMITTEE THREE TIMES

COMMITTEE SCHEDULE (BY PROJECT PHASE)

PROGRAMMING

- Site Selection
- Inventory of Existing Conditions
- Site Constraints
- Landscape Considerations



SCHEMATIC DESIGN

- Tree Impacts
- Mitigation Costs
- Proposed Landscaping
- Landscape Master Plan Compliance

CONSTRUCTION

- Potential Changes or Unforeseen Impacts
- Finalized Landscape Plan

Bylaws of the Faculty Senate & Florida Sunshine Laws

- Committee Members should be familiar with the [Bylaws of the Faculty Senate](#)
- The Lakes, Vegetation & Landscaping Committee is subject to [The “Sunshine” Law](#)
- [The Sunshine Law](#) provides a **right to access** to governmental proceedings at both the state and local levels.
- [The Sunshine Law](#) applies to any gathering of two or more members of the same board discussing a matter which will foreseeably come before that board for action.

Committee members must not discuss committee matters outside of the public meeting setting.

COMMITTEE ORIENTATION

- **Additional information may be found on the committee webpage.**
<https://facilities.ufl.edu/campus-planning/committees/lakes-vegetation-and-landscaping-committee/>
- **For meeting information and other general questions, please contact Rachel Mandell or call the main PDC phone number:**
r.mandell@ufl.edu
352-273-4000