

## REPORT TO THE LAKES VEGETATION AND LANDSCAPING COMMITTEE

<b>To:</b>	The LVL Committee	<b>For:</b>	May 9, 2018, LVLC meeting.
<b>Via:</b>	Carlos Dougnac, Assistant Vice President, PDC	<b>From:</b>	Joey Mandese, Senior Project Manager
<b>Requestor:</b>	Doug Jones, Director	<b>Presenters:</b>	Joey Mandese

PHASE:	Committee Responsibilities:	STATUS AND PRIOR COMMENTS:	DATE:
X PROGRAMMING	<i>The committee will review and recommend approval/denial of general site suitability - having evaluated impacts to trees, landscape, natural areas, and lakes.</i>		5-9-19
SCHEMATIC DESIGN	<i>The committee will review and recommend approval/denial of tree removal - plans for transplants, replacements and/or mitigation, based on the building footprint, utility corridors, and other construction activities.</i>		
DESIGN DEVELOPMENT	<i>The committee will review and recommend approval/denial of final landscaping - appropriateness and inclusion of any mitigation for tree removal.</i>		

**BACKGROUND INFORMATION:**
**PROJECT:**

UF-373, FLMNH Special Collections Building

**SITE:**

Wooded Site, South of Powell Hall

**STATUS:**

- Architect Selection in Progress to create the Design Criteria Package
- Design-Builder selection to occur in Sept/October 2019
- Construction to start approximately by January 2020
- Construction duration 9 months – 1 year
- Budget \$8M

**OBJECTIVES:**

This project has the approval of CPPEC. We are requesting site approval.

**PROJECT PHASE AND PRESENTATION NARRATIVE:**

Pre-Design

Currently, there are wet collections stored in multiple buildings throughout the campus at the University of Florida. An immediate need exists to provide a single, controlled collection facility that is easily accessible to Powell Hall. The project delivery method will be Design-Build.

**ENCLOSURES:**

Presentation

**UF-373**

**FLMNH Special Collections Building**

# **Program Phase**

**Lake Vegetation & Landscaping  
Committee**

**May 2019**

**Joey Mandese, Senior Project Manager  
Planning, Design & Construction**

UF-373

## FLMNH Special Collections Building

- Location / Background / Scope
- Tree Impacts
- Other Impacts
- Current Status
- Committee Approval/Recommendation



# UF-373

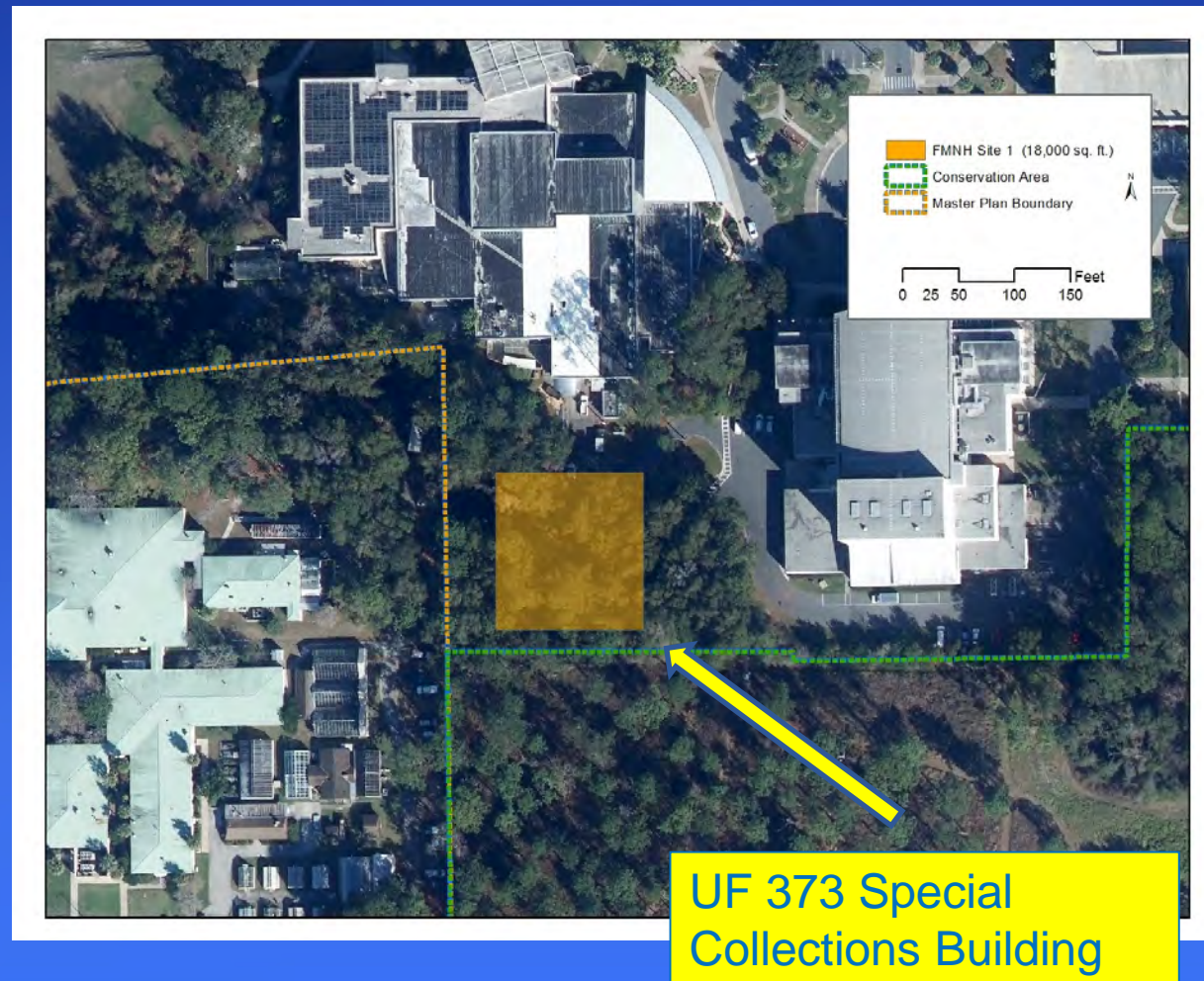
## FLMNH Special Collections Building





# UF-373

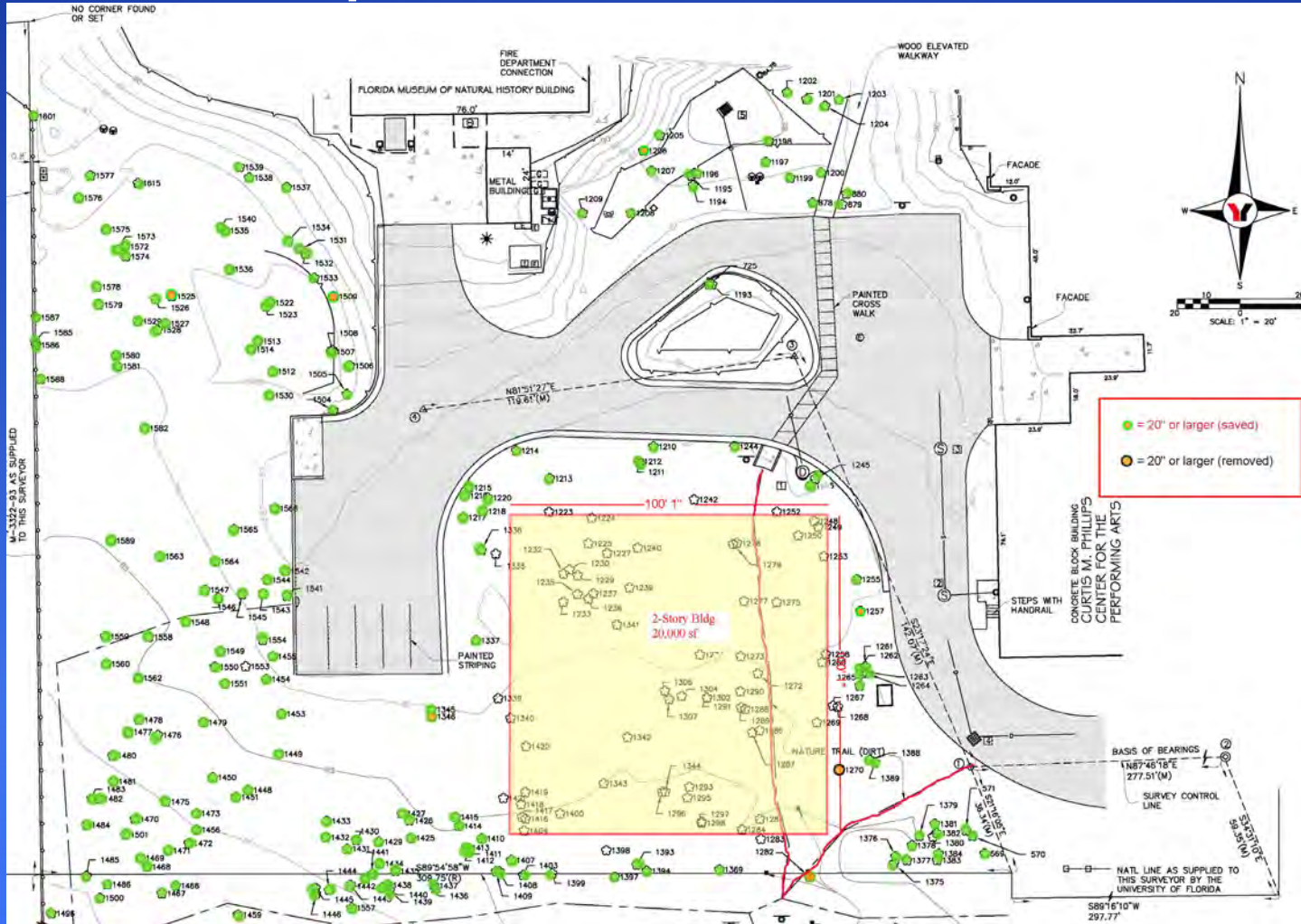
## FLMNH Special Collections Building



## Project Scope

Currently, there are wet collections stored in multiple buildings throughout the campus at the University of Florida. The desire is to provide a single, controlled collection facility that is easily accessible to Powell Hall. The project delivery method will be Design-Build.

# UF-373





# Tree Impacts

## Saved Trees

Item	Point No.	Type	Size (inches)	Item	Point No.	Type	Size (inches)	Item	Point No.	Type	Size (inches)	Item	Point No.	Type	Size (inches)	Item	Point No.	Type	Size (inches)
1	569	CHINABERRY	6	41	1263	LAUREL OAK	4	81	1429	LAUREL OAK	4	121	1481	LAUREL OAK	13	160	1543	LOBLOLLY PINE	15
2	570	CHINABERRY	4	42	1264	LAUREL OAK	3	82	1430	LAUREL OAK	3	122	1482	LOBLOLLY PINE	15	161	1544	LAUREL OAK	7
3	571	CHINABERRY	4	43	1265	LAUREL OAK	16	83	1431	LAUREL OAK	3	123	1483	LAUREL OAK	14	162	1545	LOBLOLLY PINE	12
4	725	LOBLOLLY PINE	12	44	1282	LAUREL OAK	29	84	1432	LAUREL OAK	5	124	1484	LAUREL OAK	12	163	1546	LAUREL OAK	10
5	878	LOBLOLLY PINE	12	45	1288	LAUREL OAK	8	85	1433	LAUREL OAK	4	125	1485	LAUREL OAK	14	164	1547	LAUREL OAK	11
6	879	LOBLOLLY PINE	13	46	1289	LAUREL OAK	8	86	1435	LAUREL OAK	3	126	1486	LAUREL OAK	14	165	1548	LAUREL OAK	4
7	880	LAUREL OAK	8	47	1336	LAUREL OAK	8	87	1436	LAUREL OAK	3	127	1493	CHERRY LAUREL	9, 9, 7	166	1549	LAUREL OAK	11
8	1193	LOBLOLLY PINE	13	48	1397	LAUREL OAK	12	88	1437	LAUREL OAK	3	128	1495	LAUREL OAK	3	167	1550	LAUREL OAK	8
9	1194	LAUREL OAK	12	49	1345	LOBLOLLY PINE	19	89	1438	LAUREL OAK	4	129	1496	CHERRY LAUREL	5	168	1551	LAUREL OAK	8
10	1195	LAUREL OAK	16	50	1346	LAUREL OAK	24	90	1439	LAUREL OAK	6	130	1500	LAUREL OAK	3	169	1553	LAUREL OAK	4
11	1196	LAUREL OAK	9	51	1369	LAUREL OAK	3	91	1440	LAUREL OAK	8	131	1501	LAUREL OAK	3	170	1554	CEDAR	6, 6
12	1197	LAUREL OAK	14	52	1375	CHINABERRY	4	92	1441	LAUREL OAK	3	132	1504	LAUREL OAK	18	171	1557	LOBLOLLY PINE	16
13	1198	UNKNOWN	16	53	1376	CHINABERRY	3	93	1442	LAUREL OAK	3	133	1505	LAUREL OAK	11	172	1558	LAUREL OAK	5
14	1199	LAUREL OAK	6	54	1377	CHERRY LAUREL	4	94	1443	LAUREL OAK	3	134	1506	LAUREL OAK	10	173	1559	LOBLOLLY PINE	17
15	1200	LAUREL OAK	10	55	1378	CHERRY LAUREL	3	95	1444	LOBLOLLY PINE	16	135	1507	LAUREL OAK	3	174	1560	LAUREL OAK	15
16	1201	LOBLOLLY PINE	19	56	1379	LAUREL OAK	4	96	1445	LAUREL OAK	4	136	1508	LAUREL OAK	10	175	1562	LAUREL OAK	8
17	1202	LOBLOLLY PINE	16	57	1380	CHERRY LAUREL	3	97	1446	LAUREL OAK	3	137	1509	LAUREL OAK	20	176	1563	LAUREL OAK	18
18	1203	LAUREL OAK	11	58	1381	CHINABERRY	4	98	1448	LOBLOLLY PINE	17	138	1512	LOBLOLLY PINE	19	177	1564	LAUREL OAK	7
19	1204	LAUREL OAK	4	59	1382	LAUREL OAK	11	99	1449	LOBLOLLY PINE	9	139	1513	LOBLOLLY PINE	15	178	1565	LAUREL OAK	10
20	1205	LOBLOLLY PINE	17	60	1383	CHERRY LAUREL	4	100	1450	LAUREL OAK	3	140	1514	LAUREL OAK	7	179	1566	BOX ELDER	5
21	1206	LOBLOLLY PINE	20	61	1384	CHERRY LAUREL	3	101	1451	LAUREL OAK	3	141	1522	LAUREL OAK	12	180	1572	LAUREL OAK	19
22	1207	LOBLOLLY PINE	16	62	1388	CHERRY LAUREL	5	102	1453	LAUREL OAK	12	142	1523	LAUREL OAK	3	181	1573	LAUREL OAK	12
23	1208	LAUREL OAK	12	63	1389	CHERRY LAUREL	4	103	1455	LAUREL OAK	12	143	1525	LOBLOLLY PINE	20	182	1574	LAUREL OAK	19
24	1209	LOBLOLLY PINE	17	64	1393	LOBLOLLY PINE	14	104	1456	LAUREL OAK	9	144	1526	LAUREL OAK	4	183	1575	LOBLOLLY PINE	19
25	1210	LAUREL OAK	11	65	1394	LAUREL OAK	5	105	1459	LOBLOLLY PINE	14	145	1527	LAUREL OAK	7	184	1576	LAUREL OAK	16
26	1211	LAUREL OAK	4	66	1397	WATER OAK	3	106	1460	LOBLOLLY PINE	7	146	1528	LAUREL OAK	12	185	1577	LAUREL OAK	24
27	1212	LAUREL OAK	3	67	1399	WATER OAK	3	107	1461	HICKORY	3	147	1529	LAUREL OAK	7	186	1578	LAUREL OAK	4
28	1213	LAUREL OAK	14	68	1403	LOBLOLLY PINE	16	108	1466	LAUREL OAK	14	148	1530	LAUREL OAK	14	187	1579	LAUREL OAK	5
29	1214	LAUREL OAK	13	69	1407	CABBAGE PALM	4	109	1467	LAUREL OAK	3	149	1531	LOBLOLLY PINE	15	188	1580	LAUREL OAK	12
30	1215	LAUREL OAK	10	70	1408	WATER OAK	4	110	1468	LAUREL OAK	10	150	1532	CABBAGE PALM	4	189	1581	LAUREL OAK	16
31	1216	LAUREL OAK	9	71	1409	WATER OAK	4	111	1470	LAUREL OAK	16	151	1534	LAUREL OAK	6	190	1582	MULBERRY	4
32	1217	LOBLOLLY PINE	17	72	1410	WATER OAK	3	112	1471	LAUREL OAK	11	152	1535	LOBLOLLY PINE	17	191	1585	SUGAR BERRY	10
33	1218	CHERRY LAUREL	7	73	1411	WATER OAK	3	113	1472	MAGNOLIA	3	153	1536	LAUREL OAK	18	192	1586	SUGAR BERRY	4
34	1220	LAUREL OAK	9	74	1412	LAUREL OAK	3	114	1473	LAUREL OAK	9	154	1537	LOBLOLLY PINE	14	193	1587	SUGAR BERRY	6
35	1245	LOBLOLLY PINE	10	75	1413	LAUREL OAK	3	115	1475	LAUREL OAK	17	155	1538	CEDAR	17	194	1588	CHERRY LAUREL	4
36	1246	LAUREL OAK	14	76	1414	LAUREL OAK	3	116	1476	LAUREL OAK	16	156	1539	LOBLOLLY PINE	11	195	1589	LOBLOLLY PINE	19
37	1255	LAUREL OAK	8	77	1415	LAUREL OAK	3	117	1477	LAUREL OAK	14	157	1540	LAUREL OAK	3	196	1601	CHINABERRY	3
38	1257	LAUREL OAK	20	78	1425	LOBLOLLY PINE	6	118	1478	LAUREL OAK	8	158	1541	LAUREL OAK	7	197	1615	LAUREL OAK	11
39	1261	LAUREL OAK	3	79	1426	LOBLOLLY PINE	7	119	1479	LAUREL OAK	10	159	1542	LAUREL OAK	10				
40	1262	LAUREL OAK	5	80	1427	LAUREL OAK	3	120	1480	LAUREL OAK	11								



## Proposed Removed Trees

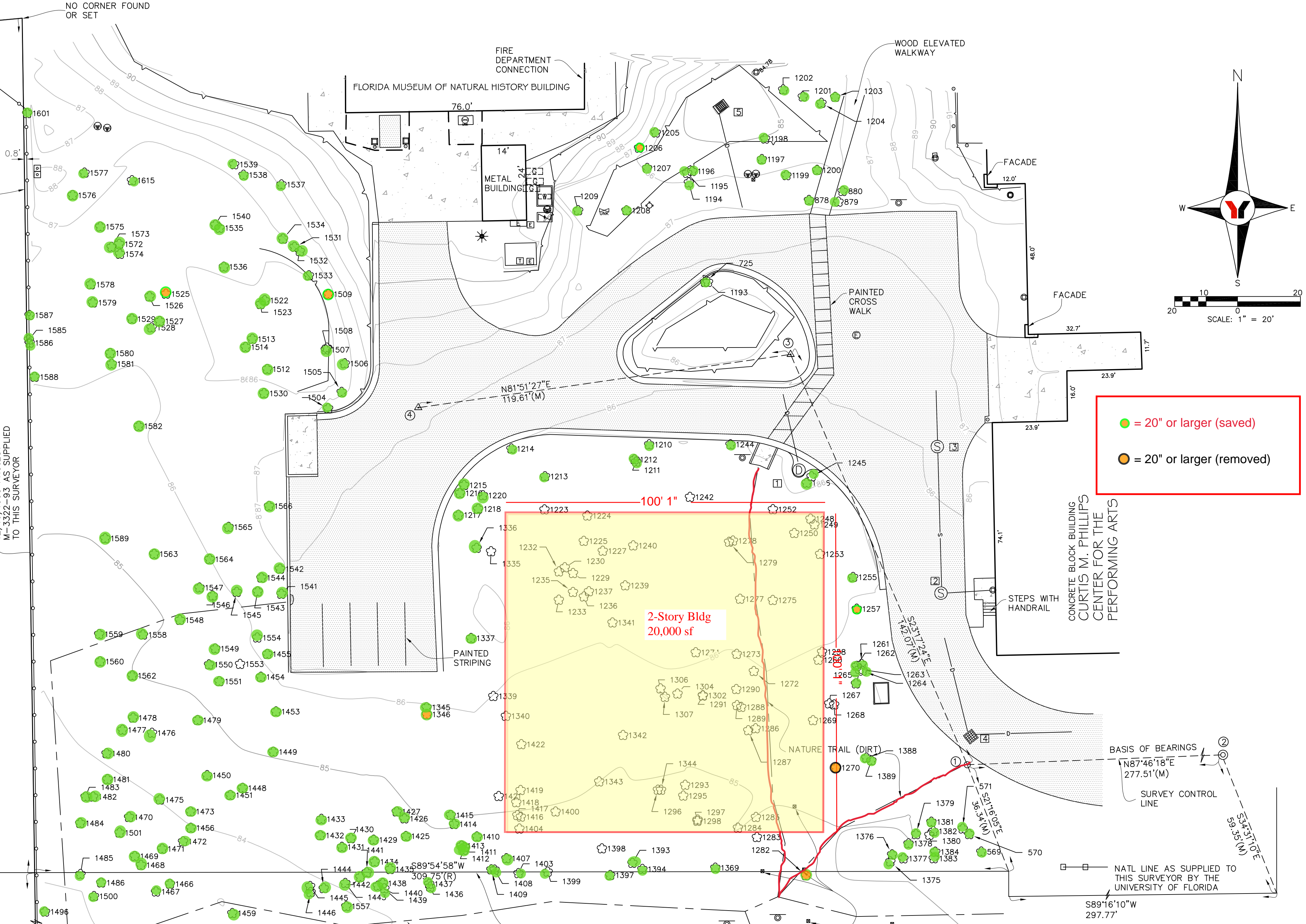
Item	Point No.	Type	Size (in.)	Item	Point No.	Type	Size (in.)
1	1223	LAUREL OAK	7	35	1284	LAUREL OAK	3
2	1224	LAUREL OAK	7	36	1285	ELM	4
3	1225	LAUREL OAK	9	37	1286	LAUREL OAK	3
4	1227	LAUREL OAK	11	38	1287	LAUREL OAK	3
5	1229	LAUREL OAK	3	39	1290	LAUREL OAK	10
6	1230	LAUREL OAK	7	40	1291	LAUREL OAK	5
7	1232	LAUREL OAK	8	41	1293	LAUREL OAK	6
8	1233	LAUREL OAK	9	42	1295	LAUREL OAK	14
9	1235	LAUREL OAK	5	43	1296	Dead Tree	16
10	1236	LAUREL OAK	3	44	1297	LAUREL OAK	3
11	1237	LAUREL OAK	3	45	1298	LAUREL OAK	3
12	1239	LAUREL OAK	10	46	1302	LAUREL OAK	5
13	1240	LAUREL OAK	12	47	1304	LAUREL OAK	4
14	1242	LAUREL OAK	19	48	1306	LAUREL OAK	12
15	1244	LAUREL OAK	18	49	1307	LAUREL OAK	4
16	1248	LAUREL OAK	4	50	1335	LAUREL OAK	10
17	1249	LAUREL OAK	12	51	1339	LAUREL OAK	18
18	1250	LAUREL OAK	15	52	1340	LAUREL OAK	3
19	1252	RED OAK	7	53	1341	LAUREL OAK	13
20	1253	LAUREL OAK	14	54	1342	LAUREL OAK	6
21	1258	CHERRY LAUREL	6	55	1343	LAUREL OAK	12
22	1260	LAUREL OAK	3	56	1344	LAUREL OAK	9
23	1267	LAUREL OAK	8	57	1398	WATER OAK	3
24	1268	LAUREL OAK	6	58	1400	LOBLOLLY PINE	11
25	1269	CHERRY LAUREL	7	59	1404	WATER OAK	5
26	1270	LAUREL OAK	24	60	1416	LAUREL OAK	3
27	1272	LAUREL OAK	13	61	1417	LAUREL OAK	4
28	1273	LAUREL OAK	13	62	1418	LAUREL OAK	3
29	1274	LAUREL OAK	9	63	1419	LAUREL OAK	3
30	1275	LAUREL OAK	14	64	1421	LAUREL OAK	5
31	1277	LAUREL OAK	11	65	1422	LAUREL OAK	10
32	1278	LAUREL OAK	3	66	1434	LAUREL OAK	3
33	1279	LAUREL OAK	3	67	1454	LOBLOLLY PINE	14
34	1283	LAUREL OAK	3	68	1469	LAUREL OAK	12
				69	1533	BOX ELDER	4

# Tree Impacts



# Current Status

- RFP's for creating the DCP is due May 15, 2019
- Preliminary Due Diligence – Site related
- Questions?





2019

# WILMOT BOTANICAL GARDENS

College of Medicine  
Healing Gardens & Teaching Laboratory  
University of Florida







## OVERVIEW

The Wilmot Memorial Garden was established in 1952 to honor Royal James "Roy" Wilmot, a noted authority on the propagation and classification of camellias. The original 10-acres was once covered almost exclusively by a pine tree canopy creating filtered light that was ideal for growing camellias. As interest on the part of UF to maintain the gardens waned, a host of "volunteer" deciduous trees was allowed to form an increasingly dense under story in the gardens, especially in the east half of the acreage. As a result, the ability to grow vibrant, healthy camellias was greatly impaired in these areas. Extensive pruning of the deciduous tree canopy had not corrected the problem.

Approximately one year ago this committee allowed us to remove 15 deciduous trees in the affected areas after which 110 mature camellias were transplanted successfully between January and April of this year.







## REFLECTIVE SHADE GARDEN DEVELOPMENT

In preparation for additional camellia plantings scheduled for late fall of 2019 and early next year, we wish to upgrade a small area in the southeast corner of the gardens. On the original Master Plan developed by David Conner and Associates, this region was identified as a reflective shade garden. Currently there is no garden as originally planned, but rather a low-lying area that frequently has standing water for extended periods of time after heavy rains, especially in the summer months. As a result, this area has not been suitable for development.

The project will entail the removal of eight deciduous trees before undertaking grading and drainage improvements. Thereafter, a very special garden will be created that will include the planting of approximately thirty mature camellias.





# WILMOT BOTANICAL GARDENS







WILMOT  
BOTANICAL  
GARDENS

---

Tree #1

Water Oak

*Quercus nigra*

- 23.8-inch circumference
- 7.58-inch diameter





WILMOT  
BOTANICAL  
GARDENS

---

Tree #2

Sweetgum

*Liquidambar styraciflua*

- 70.5-inch circumference
- 22.45-inch diameter





WILMOT  
BOTANICAL  
GARDENS

---

Tree #3

Water Oak

*Quercus nigra*

- 32.28-inch circumference
- 10.28-inch diameter







WILMOT  
BOTANICAL  
GARDENS

---

Tree #4

Water Oak

*Quercus nigra*

- 36.02-inch circumference
- 11.47-inch diameter





WILMOT  
BOTANICAL  
GARDENS

---

Tree #5

Water Oak

*Quercus nigra*

- 47.48-inch circumference
- 15.12-inch diameter





WILMOT  
BOTANICAL  
GARDENS

---

Tree #6

Water Oak

*Quercus nigra*

- 38.66-inch circumference
- 12.31-inch diameter







WILMOT  
BOTANICAL  
GARDENS

---

Tree #7

Carolina Laurel Cherry

*Prunus caroliniana*

- 27.52-inch circumference
- 8.76-inch diameter





WILMOT  
BOTANICAL  
GARDENS

---

Tree #8

Water Oak

*Quercus nigra*

- 41.53-inch circumference
- 13.23-inch diameter





2019

# WILMOT BOTANICAL GARDENS

College of Medicine  
Healing Gardens & Teaching Laboratory  
University of Florida





NORTH

WEST

UF DENTAL  
DEPT

SHANDS  
MAIN  
ENTRANCE

EAST

NATURE  
EXPLORE  
PROJECT AREA



ARCHER ROAD-SR24







15.2" Shumard  
Oak # 3







Additional bike racks are located at the East Parking Garage. Do not chain bikes to the pavilion or the handrails.

Fire Dept. Connection Keep Area Open

F.D.C. Standby # 446 202









SHUMARE OAK # 2 =15.2"

SHUMARD OAK #1 = 12.75"



## Tree Mitigation Policy Revisions

The University's current Tree Mitigation Policy was last updated in 2007. Since then a number of issues have come up that warrant an update to the policy. These issues include the low size requirement for necessitating mitigation, prioritization of replacement on site, determining shrub vs tree, pruning of heritage trees, how to deal with palm trees and the low replacement cost for heritage tree mitigation in relation to the City of Gainesville's policy and inflation. The attached edited policy is PDC's draft update that addresses deficiencies and updates the policy's balance to reduce mitigation of small trees and increase protection of Heritage trees.

### **Issues:**

1. The current policy sets tree mitigation being required beginning at 3" DBH, while the City of Gainesville is set at 8" DBH. The 3" DBH threshold tends to include a lot of volunteer trees, which are not caught before they increase to that size. This leads in some cases to trees that should be removed for aesthetic reasons, not being removed since there is no desire to pay mitigation. The revised policy recommends changing the minimum threshold to 5" DBH to be more align with the City's, but remains lower to reflect the lessor mitigation being collected.
2. The current policy prioritizes replacement mitigation on site. While this is fine in many instances, it sometimes leads to bad design and overcrowding. The revised policy recommends eliminating the preference for onsite mitigation.
3. The current policy does not address when certain species are shrubs or trees. Examples of species that can be considered both include Crape Myrtles, Podocarpus and certain hollies. The revised policy clarifies that the determination will be based on the tree / shrub form of the species being removed.
4. The current policy is silent on the pruning of heritage trees. Since the policy gives no direction, it is up to each project to determine the amount of pruning that should be done to heritage trees. This can lead to unhealthy and unsightly pruning of what are generally specimen trees. The revised policy requires that a certified arborist oversees the pruning of heritage trees.
5. The current policy does not address palm trees. LVL's informal policy has been to relocate palms to other locations on campus. Unfortunately, the Grounds Department has been having trouble identifying new locations. Additionally, the cost of moving can be more expensive and the likelihood of survival can be lower than just replacing with commercially installed healthy palms. The revised policy clarifies how palms will be mitigated based on type and size.
6. The current policy for Heritage trees was developed in 2007. Since then the City of Gainesville has increased their mitigation requirements for Heritage trees dramatically. For example a 30" DBH Live Oak's mitigation under the University's current policy would be \$2,000, while the City of Gainesville's would be \$ 15,543. The proposed changes to the tree mitigation policy are not of the same magnitude in cost and are more in line with inflation. The revised policy increases the cost of mitigation as the size of the tree increases by an increasing amount, but the cost remains much less than the City's. Additionally, this increase serves to more accurately reflect the value of the tree being removed, provide sufficient funding to offset that value, and discourage removal of heritage trees where they can be avoided.
7. The revised policy continues to direct that Grounds receive the money from mitigation, however it eliminates the \$50,000 threshold and directs that the money be spent for Open-space enhancement projects as approved by LVLC. This change will help to create a pool of money to finance campus improvements as identified in the Landscape Master Plan.



## **Faculty Senate Bylaws**

Lakes, Vegetation and Landscape Committee. The Lakes Vegetation and Landscape Committee consists of six faculty members, three appointed by the President or the President's designee and three elected by the Senate from the faculty at large, plus one student member. The Chair is elected. This Committee is responsible for items that affect the use of University lakes, including guidelines for use of such lakes in order to preserve their ecological integrity and research capabilities, and the management and well being of natural areas containing non-domesticated plants and animals. It provides recommendations concerning enforcement of policies regarding the removal of trees and other vegetation. It provides input to the University Land Use and Facilities Planning Committee regarding planning of major landscape elements such as green space, open space, and significant architectural features to ensure their compatibility with existing and planned landscaping and master planning. **It provides recommendations to the Vice President for Finance and Administration about construction on campus, specifically concerning: programming, including general site suitability having an impact on trees, landscape, natural areas and lakes; schematic design, including tree removal, plans for transplants, replacements and/or mitigation based on building footprint, utility corridors and other construction activities; and design development including new landscaping, appropriateness and inclusion of any mitigation for tree removal.**

## TREE MITIGATION POLICY

Adopted by LVL, ~~October 2007~~December 2018

Tree mitigation is the act of compensating for healthy tree removal by planting a proportionate number of replacement trees on a site based upon the species and size of each existing tree that is lost or taking other actions to restore and biologically enhance existing green-space. Ideally, construction activities on the University of Florida campus should be designed and executed to avoid impacting trees, and when impacts are unavoidable, ~~the trees are moved and re-located onsite, trees shall be mitigated as specified in this policy. As this is not always possible, the~~ following tree mitigation policies are provided as a basis for offsetting the loss of values (aesthetic, ecological, monetary, etc.) from taking down a tree based upon its species, size, and relative health.

Formatted: Normal, Indent: Left: 0", Right: 0", Space Before: 0 pt

There are trees and shrubs on the University of Florida campus that have been designated as having particular significance. These plants are National/State Champions, Heritage Specimen trees, trees that are numbered and tagged as part of the University's "Tree Walk," and rare or unique plants used for teaching purposes. These plants are very difficult to replace and must be given special protection during any activity.

Formatted: Normal

Formatted: Normal, Indent: Left: 0", Right: 0"

Heritage trees are defined as canopy species measuring 20 inches or more in diameter (DBH), except for Water Oaks, Laurel Oaks, Loblolly Pines, Sugarberry and Sweetgums (~~i.e. "Large Canopy Trees"~~) that shall be classified as heritage trees at 30 inches in diameter (DBH). Understory species shall be considered heritage at 15 inches DBH. All trees below the heritage threshold must be ~~relocated or~~ replaced on a two for one basis ~~(two replacement trees for each removed)~~. Heritage trees shall be replaced at a greater value than non-heritage trees with an additional replacement tree required for every (2) inch gain in diameter over the heritage size threshold. Trees that are also considered large shrubs shall be mitigated based on whether the ones being removed are being maintained as a tree or a shrub. Examples of such trees /shrubs include, but are not limited to, Crape Myrtles, Podocarpus, and Ligustrum japonicum. Cabbage palm trees shall be mitigated on a 2:1 basis. Other palms shall be mitigated as specified by this policy. Species recognized by the Exotic Pest Plant Council as an "invasive" exotic and those trees whose health is confirmed to be "fair" or worse as determined by ~~the project team and/or UF Urban Forester~~ a certified arborist and confirmed by the Lakes, Vegetation & Landscaping Committee (LVLC) shall be exempt from mitigation. Pruning of heritage trees shall be discouraged except as needed for the health of the tree and safety of people in proximity. Pruning of heritage trees shall follow the recommendations of a certified arborist. Pruning of heritage trees that has not followed the recommendations of a certified arborist shall incur penalties as determined by LVLC. Facility Services' Grounds department shall be exempt from mitigation and pruning requirements.

Formatted: Normal, Space Before: 0 pt

Formatted: Normal, Indent: Left: 0", Right: 0"

Where it is not possible to plant replacement trees onsite, tree impacts shall be offset by contributing to a mitigation fund used to plant new trees or for ~~green space/landscape~~ enhancement projects in appropriate locations throughout campus. When planners and architects make every effort to incorporate existing trees into their designs and there is ~~still~~ not room within the project site for all of the required replacement plantings, the offsite mitigation fee shall be calculated using the formula above with a value of \$250 per replacement tree as described in the UF Design & Construction Standards. ~~For example, a 4-inch diameter tree that is replaced 2:1 would require a fee of  $250 \times 2 = \$500$ , while a 23-inch diameter heritage tree would be replaced 4:1 equal to  $250 \times 4 = \$1000$ . These values should be used as a guide when seeking authorization for tree removal. At the discretion of the LVLC, Heritage Trees may shall be mitigated at higher rates as shown in the table below, consistent with this policy and to align more closely with actual costs of moving each tree.~~ Unauthorized tree removal is discouraged and shall increase the required mitigation to twice the rate applied to \_

Formatted: Normal, Space Before: 0 pt

Formatted: Normal, Indent: Left: 0", Right: 0"



authorized removals. The table below provides the value of offsite mitigation fees including heritage trees.

The LVLC shall make recommendations to the VP for Business Affairs on the dispensation of tree mitigation monies that exceed \$50,000 for a single project. Otherwise, Tree mitigation monies shall be paid into the PPD-Facilities Services tree account and held until green/Open-space enhancement projects are approved by the LVLC for use of these funds.

These steps shall ensure fiscal accountability for audit purposes of PECO, Federal, State and other funding sources.

Formatted: Normal, Indent: Left: 0", Right: 0", Space Before: 0 pt, Line spacing: single

Formatted: Normal, Space Before: 0 pt

Formatted: Normal, Indent: Left: 0", Right: 0"

Formatted: Normal

Formatted: Normal, Indent: Left: 0", Right: 0", Line spacing: single

Formatted: Normal

Formatted Table

Formatted: Font: 11 pt, Not Bold

Formatted: Normal, Centered, Indent: Left: 0", Line spacing: single

TREE SIZE (DBH)	COST TO RELOCATE EXISTING TREE *	COST TO MITIGATE CANOPY TREES (ratios incorporated)	COST TO MITIGATE <u>Water Oaks, Laurel Oaks, Loblolly Pines, Sugarberry and Sweetgums</u> LARGE-CANOPY TREES (ratios incorporated)**	COST TO MITIGATE UNDERSTORY TREES (ratios incorporated)**
3 to 8	\$500	\$500	\$500	\$500
9	\$1,000	\$500	\$500	\$500
10	\$1,000	\$500	\$500	\$500
11	\$3,500	\$500	\$500	\$500
12	\$3,500	\$500	\$500	\$500
13	\$3,500	\$500	\$500	\$500
14	\$3,500	\$500	\$500	\$500
5-15 15	\$500\$5,000	\$500\$500	\$500\$500	\$500\$500
16	\$6,500	\$500	\$500	\$750
17	\$8,000	\$500	\$500	\$750
18	\$9,500	\$500	\$500	\$1,000
19	\$11,000	\$500	\$500	\$1,000
20	\$12,000	\$1,000 \$750	\$500	\$1,500 \$1,250
21	\$13,500	\$1,000 \$750	\$500	\$1,500 \$1,250
22	\$15,000	\$1,000 \$1,000	\$500	\$2,000 \$1,500
23	\$16,500	\$1,000 \$1,000	\$500	\$2,000 \$1,500
24	\$18,000	\$1,500 \$1,250	\$500	\$2,500 \$1,750
25	\$19,500	\$1,500 \$1,250	\$500	\$2,500 \$1,750
26	\$21,000	\$2,000 \$1,500	\$500	\$3,000 \$2,000
27	\$22,500	\$2,000 \$1,500	\$500	\$3,000 \$2,000
28	\$24,000	\$2,500 \$1,750	\$500	\$3,500 \$2,250
29	\$25,500	\$2,500 \$1,750	\$500	\$3,500 \$2,250
30	\$27,000	\$3,000 \$2,000	\$750	\$4,000 \$2,500
31	AVOID	\$3,000 \$2,250	\$750	\$4,000 \$2,500

32	AVOID	<u>\$3,500</u> <u>\$2,250</u>	\$1,000	<u>\$4,500</u> <u>\$2,750</u>
33	AVOID	<u>\$3,500</u> <u>\$2,500</u>	\$1,000	<u>\$4,500</u> <u>\$2,750</u>
34	AVOID	<u>\$4,000</u> <u>\$2,500</u>	\$1,250	<u>\$5,000</u> <u>\$2,750</u>
35	AVOID	<u>\$4,000</u> <u>\$2,750</u>	\$1,250	<u>\$5,000</u> <u>\$3,000</u>
<u>36</u>	<u>AVOID</u>	<u>\$4,500</u>	<u>\$1,500</u>	<u>\$5,500</u>
<u>37</u>	<u>AVOID</u>	<u>\$4,500</u>	<u>\$1,500</u>	<u>\$5,500</u>
<u>38</u>	<u>AVOID</u>	<u>\$5,000</u>	<u>\$1,750</u>	<u>\$6,000</u>
<u>39</u>	<u>AVOID</u>	<u>\$5,000</u>	<u>\$1,750</u>	<u>\$6,000</u>
<u>40</u>	<u>AVOID</u>	<u>\$6,000</u>	<u>\$2,000</u>	<u>NA</u>
<u>41</u>	<u>AVOID</u>	<u>\$6,000</u>	<u>\$2,000</u>	<u>NA</u>
<u>43</u>	<u>AVOID</u>	<u>\$6,500</u>	<u>\$2,250</u>	<u>NA</u>
<u>44</u>	<u>AVOID</u>	<u>\$6,500</u>	<u>\$2,250</u>	<u>NA</u>
<u>45</u>	<u>AVOID</u>	<u>\$7,000</u>	<u>\$2,500</u>	<u>NA</u>
<u>46</u>	<u>AVOID</u>	<u>\$7,000</u>	<u>\$2,500</u>	<u>NA</u>
<u>47</u>	<u>AVOID</u>	<u>\$8,000</u>	<u>\$2,750</u>	<u>NA</u>
<u>48</u>	<u>AVOID</u>	<u>\$8,000</u>	<u>\$2,750</u>	<u>NA</u>
<u>49</u>	<u>AVOID</u>	<u>\$8,500</u>	<u>\$3,000</u>	<u>NA</u>
<u>50</u>	<u>AVOID</u>	<u>\$8,500</u>	<u>\$3,000</u>	<u>NA</u>
<u>51</u>	<u>AVOID</u>	<u>\$9,000</u>	<u>\$3,000</u>	<u>NA</u>
<u>52</u>	<u>AVOID</u>	<u>\$9,000</u>	<u>\$3,000</u>	<u>NA</u>
<u>53</u>	<u>AVOID</u>	<u>\$9,500</u>	<u>\$3,000</u>	<u>NA</u>
<u>55</u>	<u>AVOID</u>	<u>\$9,500</u>	<u>\$3,000</u>	<u>NA</u>
<u>55</u>	<u>AVOID</u>	<u>\$10,000</u>	<u>\$3,000</u>	<u>NA</u>
<u>56</u>	<u>AVOID</u>	<u>\$10,000</u>	<u>\$3,000</u>	<u>NA</u>
<u>57</u>	<u>AVOID</u>	<u>\$10,500</u>	<u>\$3,000</u>	<u>NA</u>
<u>58</u>	<u>AVOID</u>	<u>\$10,500</u>	<u>\$3,000</u>	<u>NA</u>
<u>59</u>	<u>AVOID</u>	<u>\$11,000</u>	<u>\$3,000</u>	<u>NA</u>
<u>60</u>	<u>AVOID</u>	<u>\$11,000</u>	<u>\$4,000</u>	<u>NA</u>
<u>61</u>	<u>AVOID</u>	<u>\$11,500</u>	<u>\$4,000</u>	<u>NA</u>
<u>62</u>	<u>AVOID</u>	<u>\$11,500</u>	<u>\$4,000</u>	<u>NA</u>
<u>63</u>	<u>AVOID</u>	<u>\$12,000</u>	<u>\$4,000</u>	<u>NA</u>
<u>64</u>	<u>AVOID</u>	<u>\$12,000</u>	<u>\$4,000</u>	<u>NA</u>
<u>65</u>	<u>AVOID</u>	<u>\$12,500</u>	<u>\$4,000</u>	<u>NA</u>
<u>66</u>	<u>AVOID</u>	<u>\$12,500</u>	<u>\$4,000</u>	<u>NA</u>
<u>67</u>	<u>AVOID</u>	<u>\$13,000</u>	<u>\$4,000</u>	<u>NA</u>
<u>68</u>	<u>AVOID</u>	<u>\$13,000</u>	<u>\$4,000</u>	<u>NA</u>
<u>69</u>	<u>AVOID</u>	<u>\$13,500</u>	<u>\$4,000</u>	<u>NA</u>
<u>70</u>	<u>AVOID</u>	<u>\$13,500</u>	<u>\$5,000</u>	<u>NA</u>
<u>71</u>	<u>AVOID</u>	<u>\$14,000</u>	<u>\$5,000</u>	<u>NA</u>
<u>72</u>	<u>AVOID</u>	<u>\$14,000</u>	<u>\$5,000</u>	<u>NA</u>
<u>73</u>	<u>AVOID</u>	<u>\$14,500</u>	<u>\$5,000</u>	<u>NA</u>
<u>74</u>	<u>AVOID</u>	<u>\$14,500</u>	<u>\$5,000</u>	<u>NA</u>
<u>75</u>	<u>AVOID</u>	<u>\$15,000</u>	<u>\$5,000</u>	<u>NA</u>
<u>76</u>	<u>AVOID</u>	<u>\$15,000</u>	<u>\$5,000</u>	<u>NA</u>
<u>77</u>	<u>AVOID</u>	<u>\$15,500</u>	<u>\$5,000</u>	<u>NA</u>
<u>78</u>	<u>AVOID</u>	<u>\$15,500</u>	<u>\$5,000</u>	<u>NA</u>
<u>79</u>	<u>AVOID</u>	<u>\$16,000</u>	<u>\$5,000</u>	<u>NA</u>
<u>80</u>	<u>AVOID</u>	<u>\$16,000</u>	<u>\$6,000</u>	<u>NA</u>
<u>81</u>	<u>AVOID</u>	<u>\$16,500</u>	<u>\$6,000</u>	<u>NA</u>
<u>82</u>	<u>AVOID</u>	<u>\$16,500</u>	<u>\$6,000</u>	<u>NA</u>

Formatted: Left



<u>83</u>	<u>AVOID</u>	<u>\$17,000</u>	<u>\$6,000</u>	<u>NA</u>
<u>84</u>	<u>AVOID</u>	<u>\$17,000</u>	<u>\$6,000</u>	<u>NA</u>
<u>85</u>	<u>AVOID</u>	<u>\$17,500</u>	<u>\$6,000</u>	<u>NA</u>
<u>86</u>	<u>AVOID</u>	<u>\$17,500</u>	<u>\$6,000</u>	<u>NA</u>
<u>87</u>	<u>AVOID</u>	<u>\$18,000</u>	<u>\$6,000</u>	<u>NA</u>
<u>88</u>	<u>AVOID</u>	<u>\$18,000</u>	<u>\$6,000</u>	<u>NA</u>
<u>89</u>	<u>AVOID</u>	<u>\$18,500</u>	<u>\$6,000</u>	<u>NA</u>
<u>90</u>	<u>AVOID</u>	<u>\$18,500</u>	<u>\$6,000</u>	<u>NA</u>

\* Source: Davey Resource Group ([www.davey.com](http://www.davey.com))

\*\* Large Canopy Trees are Laurel & Water Oaks, Sweet gum, Loblolly Pine and Sugarberry\*\* An evergreen or deciduous tree whose mature height can be expected to range between 15 feet and 35 feet and which has an expected crown spread range between 15 feet and 25 feet as determined by the latest edition of "American Standards of Nursery Stock" as set forth by the American Association of Nurserymen.