

The logo for the University of Florida, consisting of the letters 'UF' in white on an orange square background.

UF

Broward Dining Hall

UF-687

Programming
December 8th, 2022

Robert Hatker



Project Overview: Site Location

- **Location:** Broward Dining on Inner Road, main campus.
 - Near Rawlings Hall, Broward, Mallory, Reid, Yulee & Cypress (housing)
 - Across Inner Road from the Architecture Building
 - Adjacent to the new Honors Village housing complex



Project Overview

- **Project Purpose: Renovation & Expansion**

- It is desired for campus dining to provide a value-added experience to all campus constituents and support the overall University's brand as it strives to keep or better the top-5 public institution in the country. The pursuit of this plan aligns with the University's new contract terms which has recently been reached with Chartwells, and as part of the agreement, a few dining services will be upgraded to accommodate for the rising number of the student in the areas as well as being part of the priorities for what must be accomplished through the partnership with Chartwells.

- **Future Land Use: Support/Clinical**

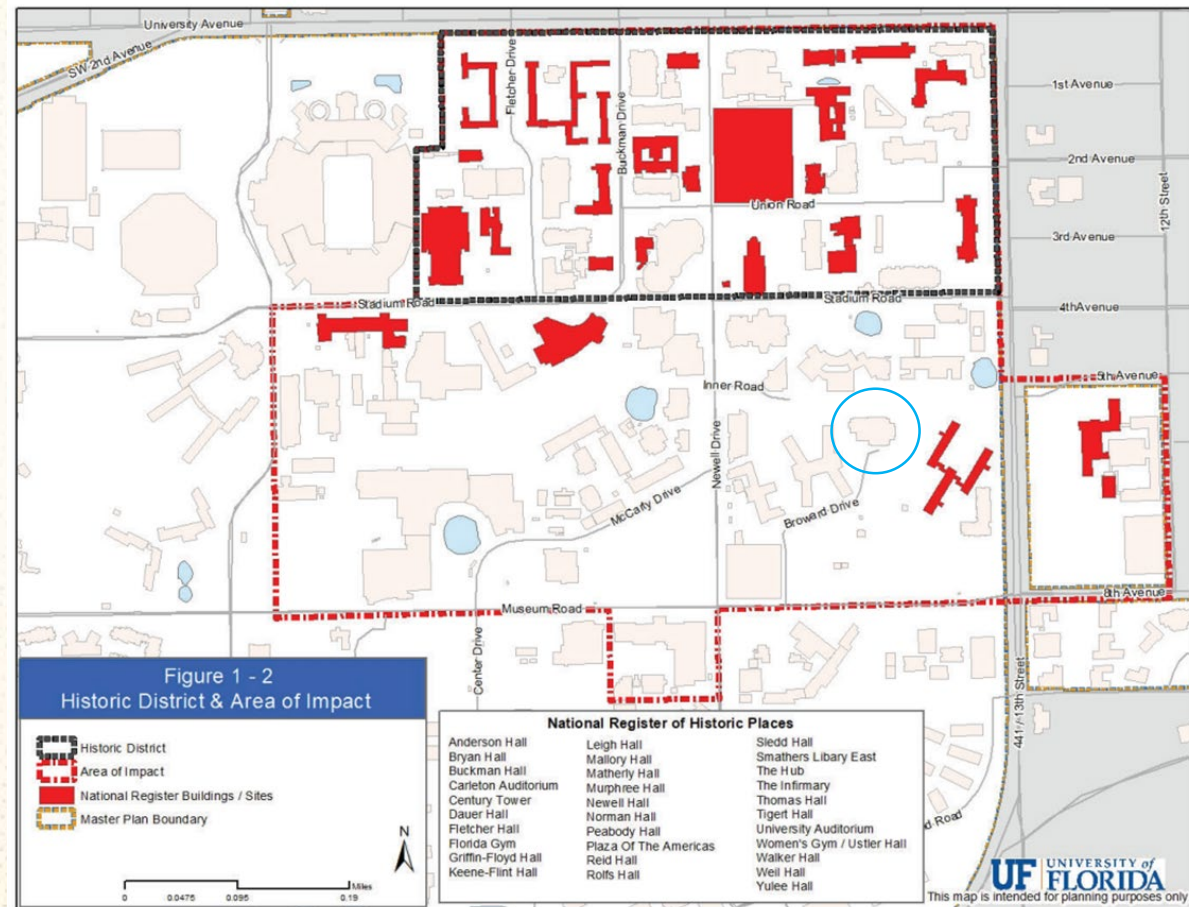
- **Estimated New SF: 5000-7000 ±**

- **Current Use: Campus Dining Facility**



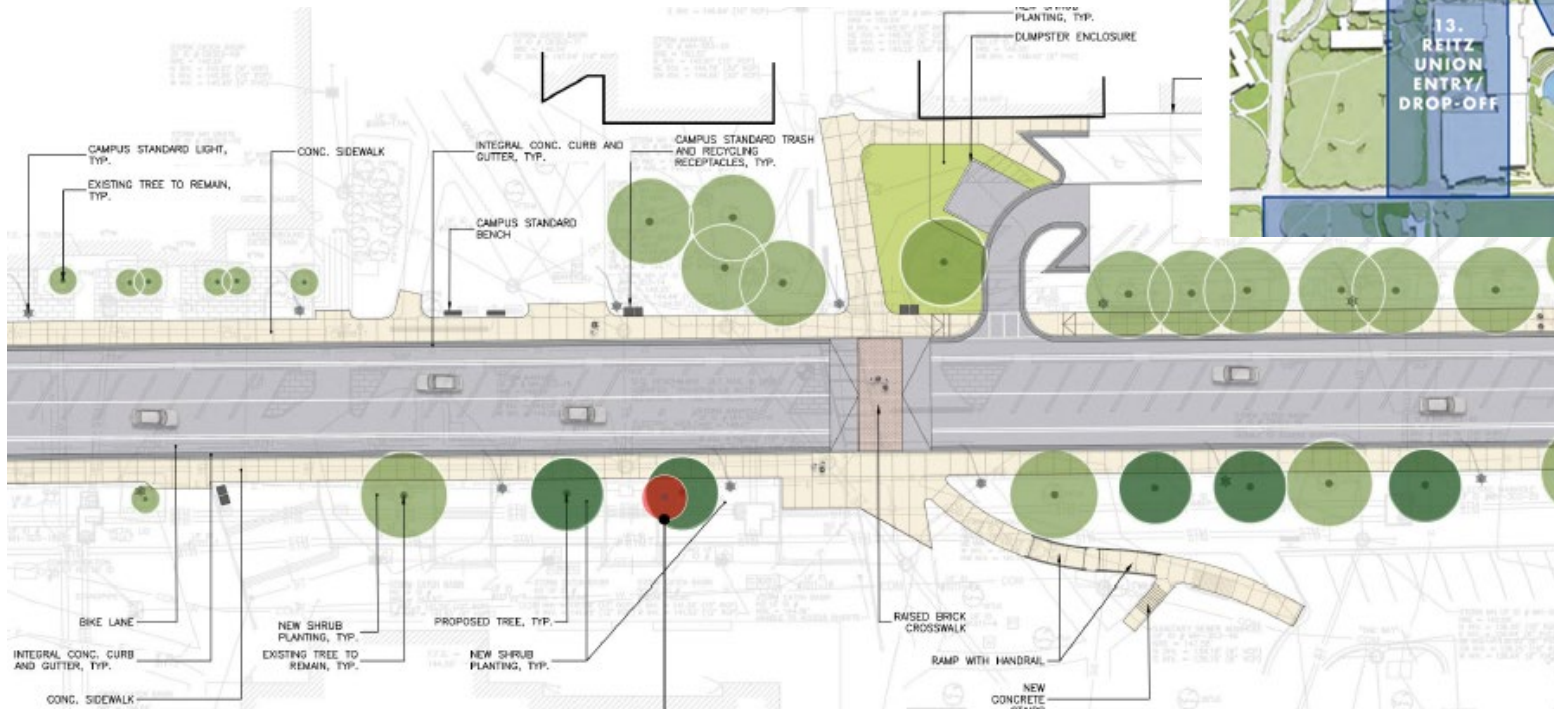
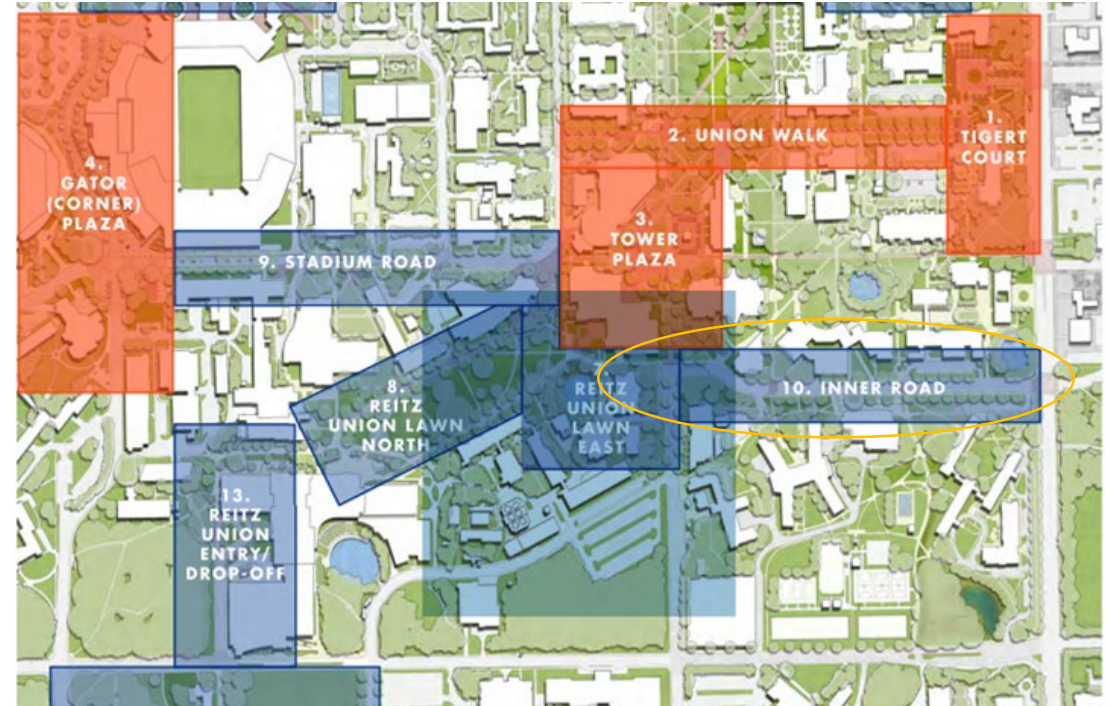
Site Overview, Existing Conditions & Sustainability

- What does the current landscape of the project site look like?
 - 9 Heritage Trees on Site (Live Oaks)
 - No known significant elevation changes or site constraints in the areas of potential expansion
 - No known bird nests or animal habitats
 - Not within an archeologically sensitive area
 - Not in the 100-year Flood Plain
- What does the surrounding area look like?
 - The project is located within the Historic Impact Area
 - There are no adjacent lakes, ponds or conservation areas
 - There is not a wetland within 50ft



Landscape Master Plan

- The project falls within an area identified as a priority project – **Inner Road**



Landscape Master Plan

- The project also falls within an area identified as a Campus Area for Enhancement: **Yulee Pit**



1 WALKWAY TO YULEE PIT

Extend the highly traveled north-south secondary walkway that originates at Matherly Hall on to Yulee Pit. Accommodate universal access from Inner Road to Yulee Pit east of Broward Dining Center through careful regrading, eliminating the awkward assemblage of accessible ramps. Blend with the existing curvilinear walkway southwest of Yulee Hall and tie into existing walks, adding a new connection south of the Dining Center. On the east side of the new curvilinear walkway, enhance the walkway experience and demonstrate sustainable LID practices through the addition of a bioswale that leads to a reconfigured Yulee Pit.

- New Undergraduate Housing Facility (UF-654)**
 - ~1400 Beds

Landscape Master Plan

- The project fronts the Arts Axis.
- The project does not front a campus edge.
- The project scope does not require roadway repairs.

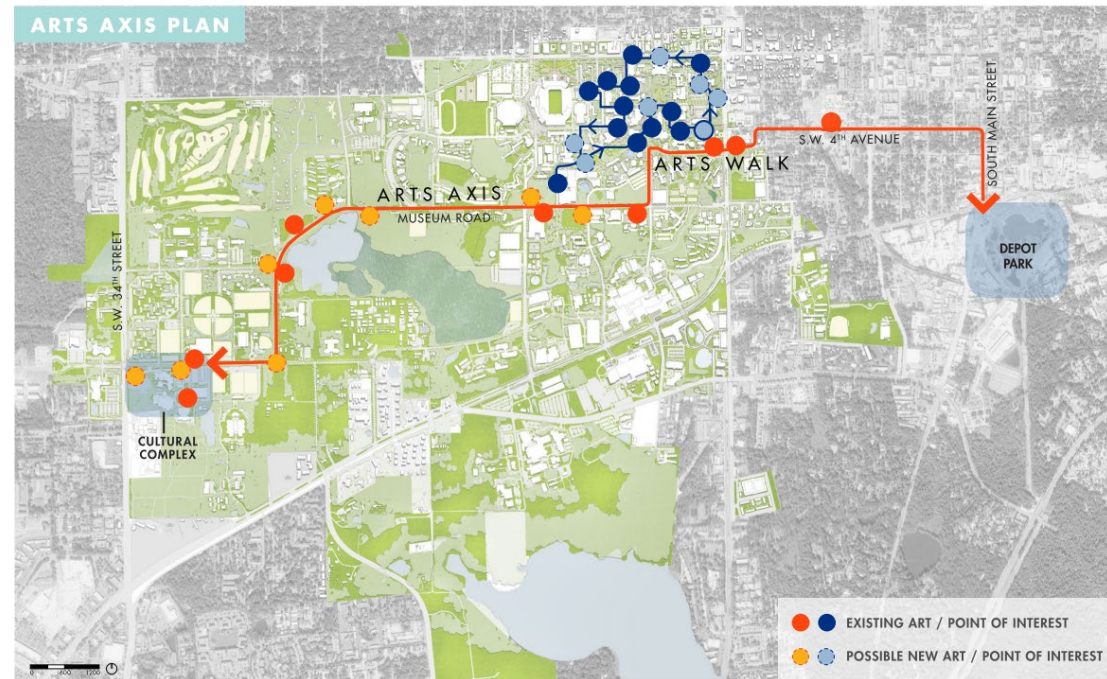
PRINCIPLE 1

Greet Gainesville with a More Welcoming and Integrated Urban Experience

The 2016 Strategic Development Plan (SDP) outlines a path to preeminence for UF through the transformation of its relationship with its host city, Gainesville. A key finding of the SDP was that the University's growth should be concentrated within the eastern third of the campus where new development would spark Downtown collaboration and development and benefit adjoining neighborhoods. The Landscape Master Plan seeks to support this effort through the enhancement of the spaces and connections within the eastern third of the campus and its campus edges, as well as the improvement of all of the University's edges.

F ARTS AXIS

Reinforce the connection between UF and the City with the celebration of the campus's art and cultural features through the creation of the Art Axis. (See Section 4, Principle 1) Look for opportunities to enhance the vehicular portion of the route as well as the walking portion in the campus core through the thoughtful addition of art to campus spaces and buildings.



Tree Impacts

The following slides show all the trees on the site, but no trees impacts are anticipated with this project. All trees will be protected during construction activities.



UF UNIVERSITY of FLORIDA
Broward Dining Center
The Fresh Food Co.
Chick-fil-A

Live Oak
DBH = 30.6in





Live Oak
DBH = 22.9in



Live Oak
DBH = 23.2in



Live Oak
DBH = 44.9in



Southern Live Oaks

DBH = 20.1in

DBH = 19.4in

DBH = 18.1in



Southern Live Oaks

DBH = 21.7in

DBH = 23.2in

Requested Action: A motion to approve the project as presented.

Questions?

DECEMBER 8th, 2022
LAKES, VEGETATION & LANDSCAPING COMMITTEE

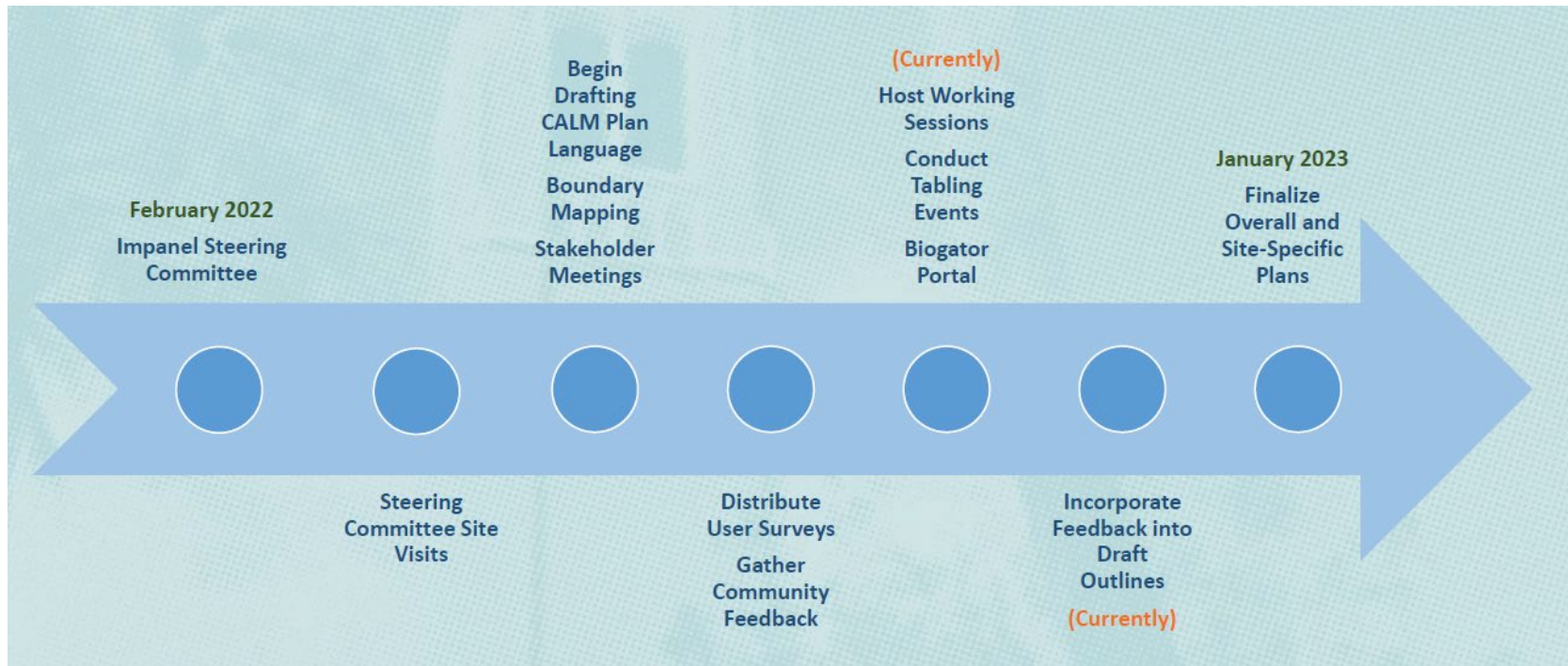


CALM PLAN UPDATE

CONSERVATION AREA LAND MANAGEMENT PLAN

CALM UPDATE

Process Overview



LVL 12/8/22

CALM UPDATE

- **Working Sessions**
 - Obtaining feedback from steering committee
 - Identifying priority projects
- **Drafting Overall and Site-Specific Management Plans**
 - Finalizing outlines for 23 conservation areas
 - Drafting language for long-term visioning
- **Boundary Mapping**
 - Boundary mapping is mostly complete for conservation areas within the campus core
 - Shifting focus toward larger conservation areas on the outskirts of campus
- **Meetings with Stakeholders**
 - DRC
 - Faculty Experts
 - Student Organizations
- **Outreach Events**
 - Tabling
 - Clean Up Events
 - Conversations about Conservation Event
 - Future Town Hall event



Hillary Laskey, PDC Intern, Tabling at Graham Woods

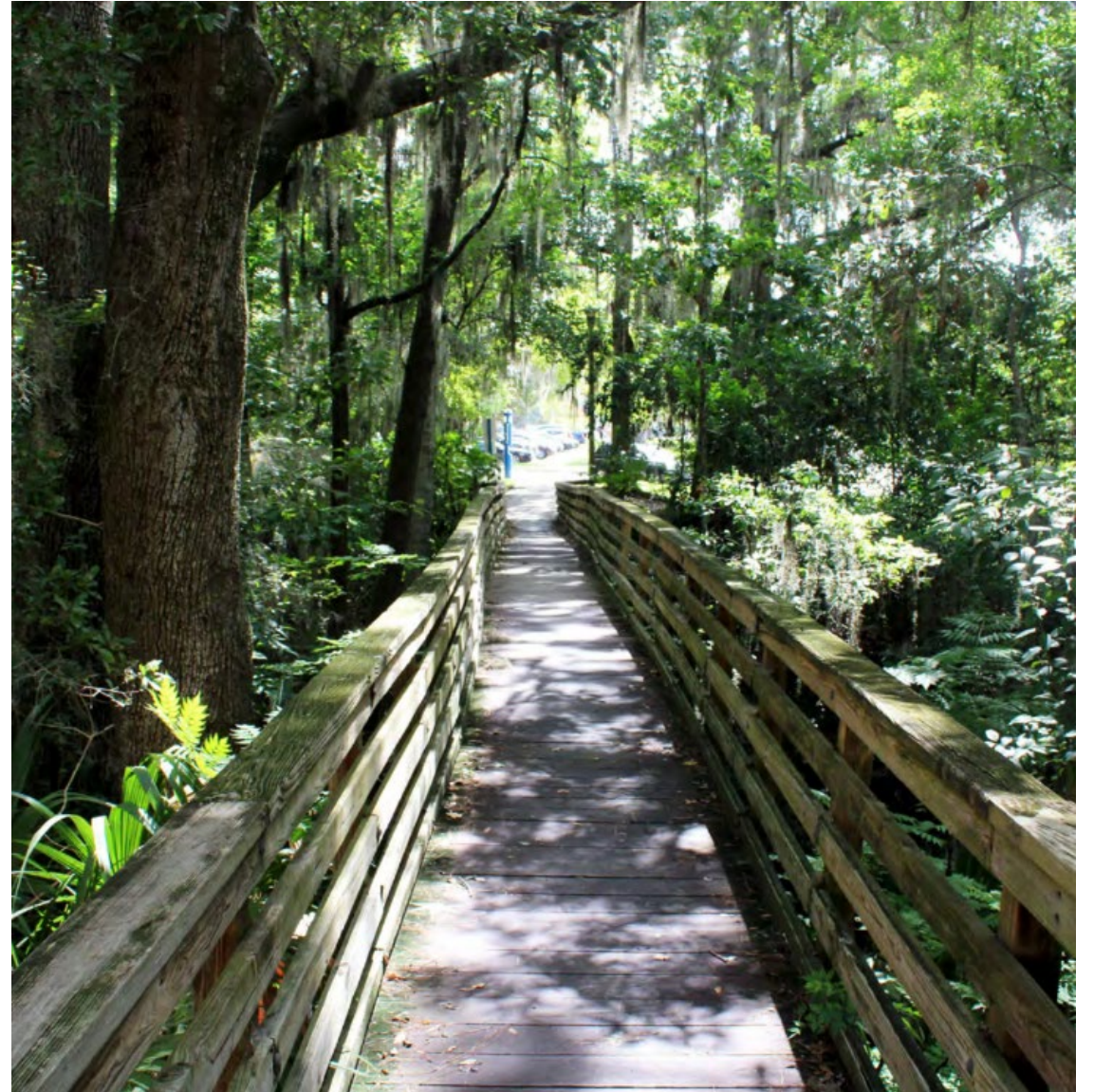
CALM UPDATE

Priority Projects

Over the course of 10 working sessions, we continued to identify and modify our priority projects resulting from the CALM plan update. We separated the priority projects into two categories: Overall and Site Specific. The steering committee ranked the projects from most to least important.

Results: The top two priorities identified for the overall CALM plan are to update signage and kiosks for all conservation areas, and to develop a long-term plan for invasive species removal.

The top priority for the site-specific CALM plans is to implement bridge repairs and enhancements at Jennings Creek.



Impacts of invasive species on forested areas:

- Reduction of biodiversity
- Loss or encroachment of native plant species
- Loss of habitat for wildlife
- Disruption of native plant and animal associations (e.g., seed dispersal and pollination)
- Altered native plant genetics through hybridization
- Increase plant stress



Bartram Carr Woods

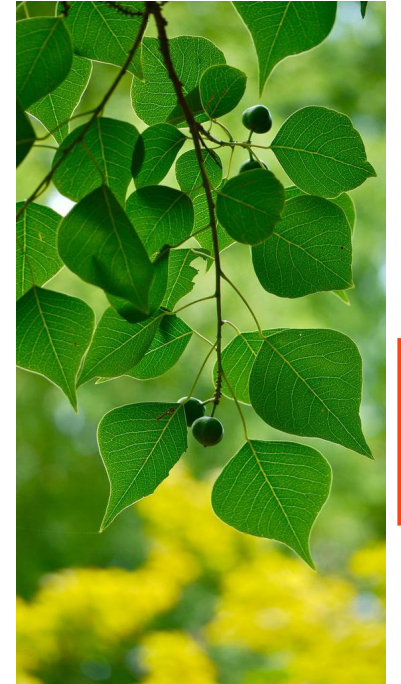
IDENTIFIED INVASIVES



AIR POTATO
DIOSCOREA BULBIFERA



PRIVET
LIGUSTRUM SPP.



CHINESE TALLOW
TRIADICA SEBIFERA

Benefits of invasive species management:

- Increased sight lines within forested areas
- Increased sunlight to encourage native sapling growth
- Encourage native species establishment
- Enhanced user experience
- Enhanced landscapes within the campus core



Request: Approval to use tree mitigation funds to manage invasive species in our campus conservation areas.

- **The Tree Mitigation Policy States:**

- *“Tree mitigation monies shall be paid into the Facilities Services tree account and held until enhancement projects are approved by the LVLC for use of these funds.”*

- We would like to propose that tree mitigation funds be used to address invasive species management in our conservation areas, as prioritized by the steering committee.
- If approved, we will return to the committee with a more detailed maintenance plan, time frame and budget for final consideration.