

REPORT TO THE LAKES, VEGETATION AND LANDSCAPING ADVISORY COMMITTEE

| | | | |
|-------------------|--|-------------------|------------------------------------|
| To: | The Lakes, Vegetation and Landscaping Advisory Committee | FOR: | March 13, 2022 Programming |
| VIA: | Carlos Dougnac, Assistant Vice President, PDC | FROM: | Tamera Baughman, Project Manager |
| REQUESTOR: | Jenna Gonzalez / Disability Resource Center | PRESENTERS | PDC Project Manager and User Group |

| PHASE: | Committee Responsibilities: | STATUS AND PRIOR COMMENTS: | DATE: |
|--------------------|--|----------------------------|-------|
| X PROGRAMMING | <i>The committee will provide preliminary review of the proposed land use and siting options as they impact parking and circulation (vehicular, bicycle and pedestrian), and recommend approval/denial of these options.</i> | | |
| SCHEMATIC DESIGN | <i>The committee will review and recommend approval/denial of initial development of the site plan and exterior building design as they impact parking and circulation (vehicular, bicycle and pedestrian).</i> | | |
| DESIGN DEVELOPMENT | <i>The committee will review and recommend approval/denial of final architectural and site design for parking and circulation (vehicular, bicycle and pedestrian) elements.</i> | | |

BACKGROUND INFORMATION:
BACKGROUND INFORMATION:

PROJECT:
UF-675, Disability Resource Center

SITE:
15 NW 15TH STREET, GAINESVILLE, FL 32603.

STATUS:
Project is currently in Programming. Tentative dates for committee presentations are as follows:

- October 11, 2022 Programming Presentation to P&TC
- November 10, 2022 Programming Presentation to LVLC
- January 17, 2023 Programming Presentation to PHBSC
- February 7, 2023 Programming Presentation to ULUFPC
- Subsequent presentations for Schematic Design and Design Development will be scheduled after selection of a design team is accomplished.

OBJECTIVES:

- Tree removals are yet to be determined, and there is currently not a great deal of landscaping on the property. Utilities serving the project site are provided by GRU, and landscape and sidewalk design will strive to conform with both UF Landscape Masterplan standards and those of the City of Gainesville. There is potential for city owned utility infrastructure to affect our ability to save or relocate the small number of existing plantings.

PROJECT PHASE AND PRESENTATION NARRATIVE:
Programming

The project will be located at NW 15th Street, to the north of campus and east of the Institute of Black Culture and La Casita. The new building will house UF Disability Resources. It will have two floors, totaling approximately 12,000 GSF.

Tree survey, site plan, and landscape plan will be available at the Advanced Schematic Design phase.

ENCLOSURES:

1. Presentation
2. CMP Checklist

The logo for the University of Florida, consisting of the letters 'UF' in white on an orange square background.

UF

Disability Resource Center

UF-675

Programming
LVL Committee Meeting, November 10, 2022

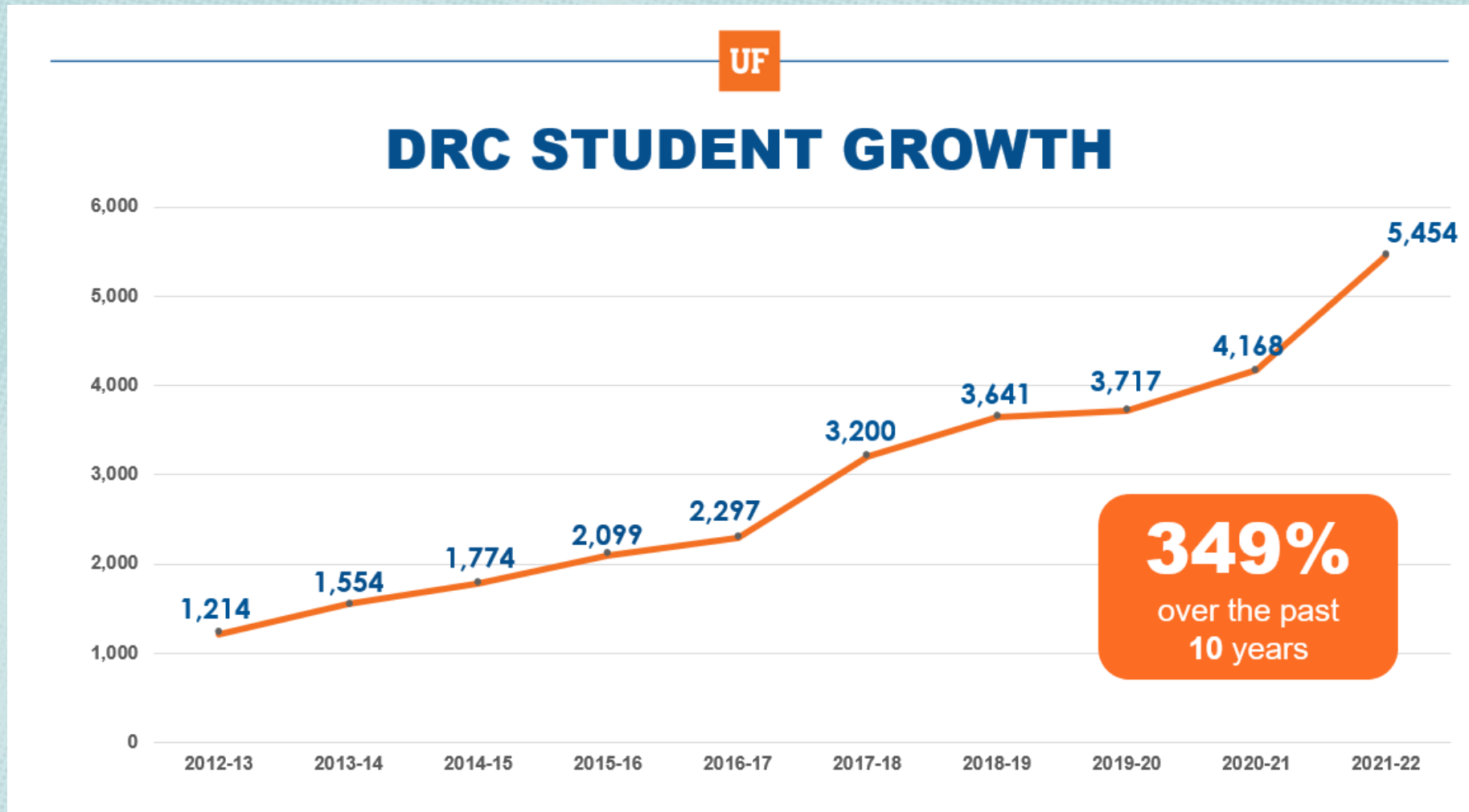
Tamera Baughman, Project Manager



Project Overview (Location)



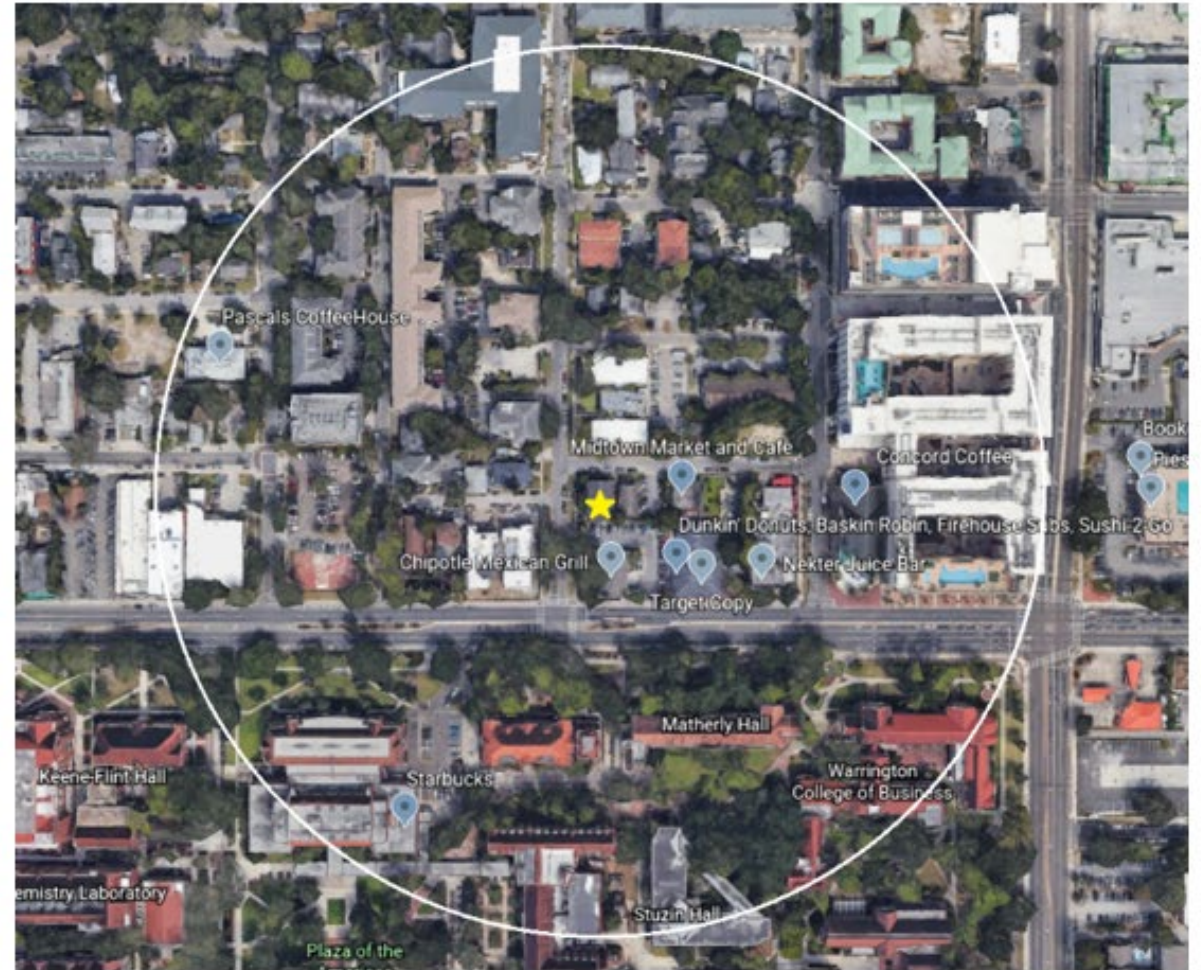
Project Overview



REID HALL 700 FT.



PRESS BUILDING 700 FT.



Project Overview

- The **Future Land Use designation** of the project location is Support/Clinical, as shown in the Campus Master Plan.
- New DRC facility will be approximately 12,000 GSF.
- S.U.S. Press Buildings currently located on this site are unoccupied and will be demolished.
- The Institute of Black Culture and La Casita are across 15th Street to the west.
- The Cooperative Living Organization is directly adjacent to the north, across NW 1st Ave.
- Other adjacent properties are within the City of Gainesville.

Site Overview, Existing Conditions & Sustainability

Current landscape:

- There is a small amount of sod area and a city sidewalk fronting NW 15th Street. There are two trees and hedges (to be identified).
- No elevation changes.
- Power lines on NW 15th Street.
- No known bird nests or animal habitats that may be disturbed by construction.
- The site is not in an [archeologically sensitive area](#).
- The site is not within the [100-year floodplain](#).
- What does the surrounding area look like?
 - Not within the [historic core/historic impact area](#) on campus - one block north of it.
 - No adjacent lakes/ponds/conservation areas.
 - No [wetland](#) within 50ft.



Landscape Master Plan

- The DRC project does not fall within an area identified as a [priority project](#).
- The DRC project does not fall within an area identified as a [campus area for enhancement](#).
- The DRC project does not front the [Arts Axis or Arts Walk](#).
- The DRC project does not front a [campus edge](#).
- The DRC project scope does not require roadway repairs. However, we will need to address sidewalk enhancements to improve accessibility which will require collaboration with the City of Gainesville.

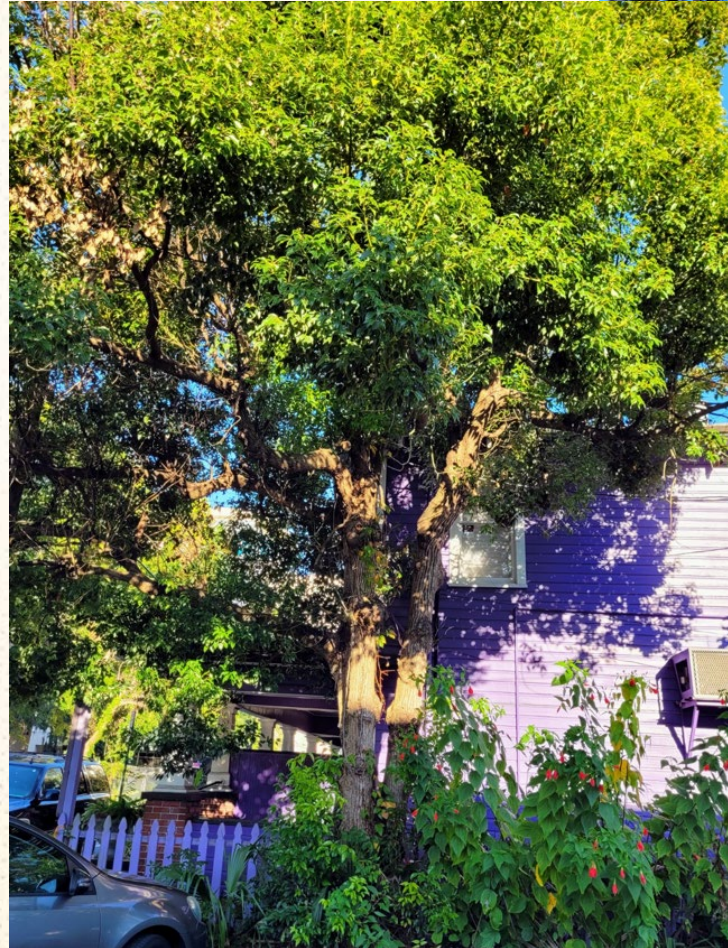
Tree Impacts

- (4) Podocarpus trees in the front.
- (1) Chinese holly and (1) Tulip tree on the side.
- The parking lot pictured below is outside our project boundary.



Tree Impacts

- (1) Hackberry tree in the back.
- (1) Invasive Camphor tree in the back.





Requesting: Motion to approve the project as presented.



CALM Plan Update

November 10, 2022

Lakes, Vegetation, and Landscaping Committee

CALM Plan Process Overview



Current Status

- **Working Sessions**
 - Obtaining feedback from Steering Committee
 - Identifying priority projects
- **Drafting Overall and Site-Specific Management Plans**
 - Finalizing outlines for 23 conservation areas
 - Drafting language for long-term visioning
- **Boundary Mapping**
 - Boundary mapping is mostly complete for conservation areas within the campus core
 - Shifting focus toward larger conservation areas on the outskirts of campus
- **Meetings with Key Stakeholders**
 - DRC
 - Faculty Experts
 - Student Organizations
- **Tabling Events**
 - Graham Woods – October 17th
 - Plaza of the Americas – October 24th
 - Future events planned for later this month

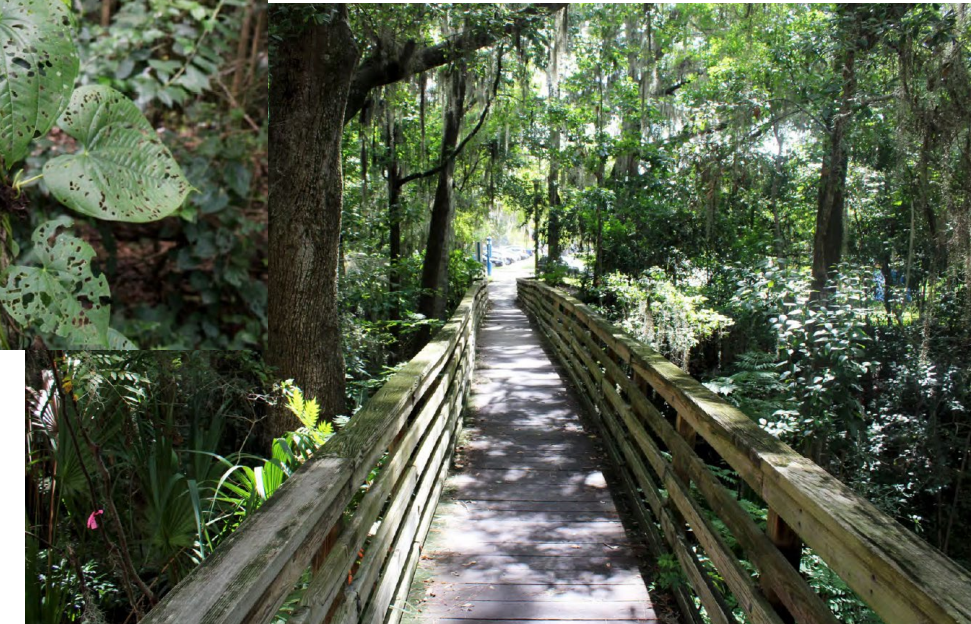


Priority Projects

- **Infrastructure Improvements**
 - Bridge and boardwalk repairs
 - Safety enhancements
- **ADA Accessibility**
 - Expanding accessibility in conservation areas
 - Trail systems, seating, signage
 - Working with DRC
- **Trail Enhancements**
 - Expanding connectivity
 - Routine maintenance
- **Signage and Wayfinding**
 - Consistent and educational
 - Maximize conservation areas
- **Invasive Species**
 - **Inherent challenge for conservation areas**
 - **Short-term and long-term management**



Jennings Creek



Discussion Question: What strategies could the University of Florida employ to create a long-term management plan to remove and maintain invasive species in our conservation areas?