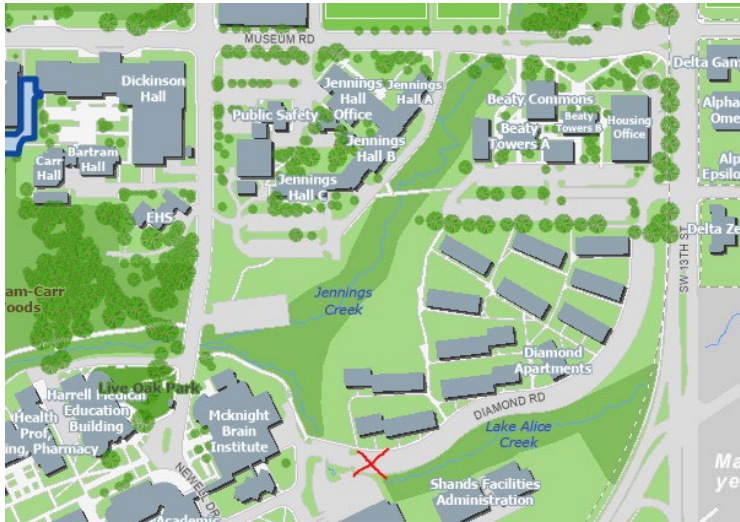


Site Visit #10: Diamond Creek, Blue Wave Wetland & Tumblin Creek

Wednesday, May 11th, 2022 at 2:00pm

Meet-Up Location 1: Diamond Village Parking Lot near Bldg. 305



Meet-Up Location 2: PKY Parking Lot (entrance off 6th St.)



Weather (as of 5/6/22):

Wed 11 | Day

85°

24%
 NNE 11 mph

Intervals of clouds and sunshine. High near 85F. Winds NNE at 10 to 15 mph.

Humidity 48%	UV Index 10 of 10
Sunrise 6:38 am	Sunset 8:12 pm

Where to Park:

- Orange Decal parking available in Housing parking lots
- Orange Decal parking available in Garage IV
- Option to carpool from North O’Connell parking lot to site visits – will return to North O’Connell parking lot (Orange Decal)
- If you do not have a campus decal and need parking accommodations, please reach out to Rachel Mandell
- We encourage you to carpool, use public transit, or bike/walk!
- TAPS parking map: <https://taps.ufl.edu/parking-info/parking-map/>

Core Values:

- Committing to full participation
- Sharing collective wisdom for inclusive solutions
- Accepting shared responsibility
- Embracing creativity and a ‘what if?’ mindset
- Supporting open and equitable discussion
- **Have Fun!**

Links to Current CALM Plans:

Diamond Creek – None

[Blue Wave Wetland](#)
[Creeks and Ponds](#)

iNaturalist Links:

Diamond Creek – None

[Blue Wave Wetland](#)

Tumblin Creek - None

What to Bring:

- Water
- Sunscreen
- Insect Repellent
- Clipboard
- Pen/Pencil
- Raincoat or Poncho
- Shoes you don’t mind getting wet

Contents for Review:

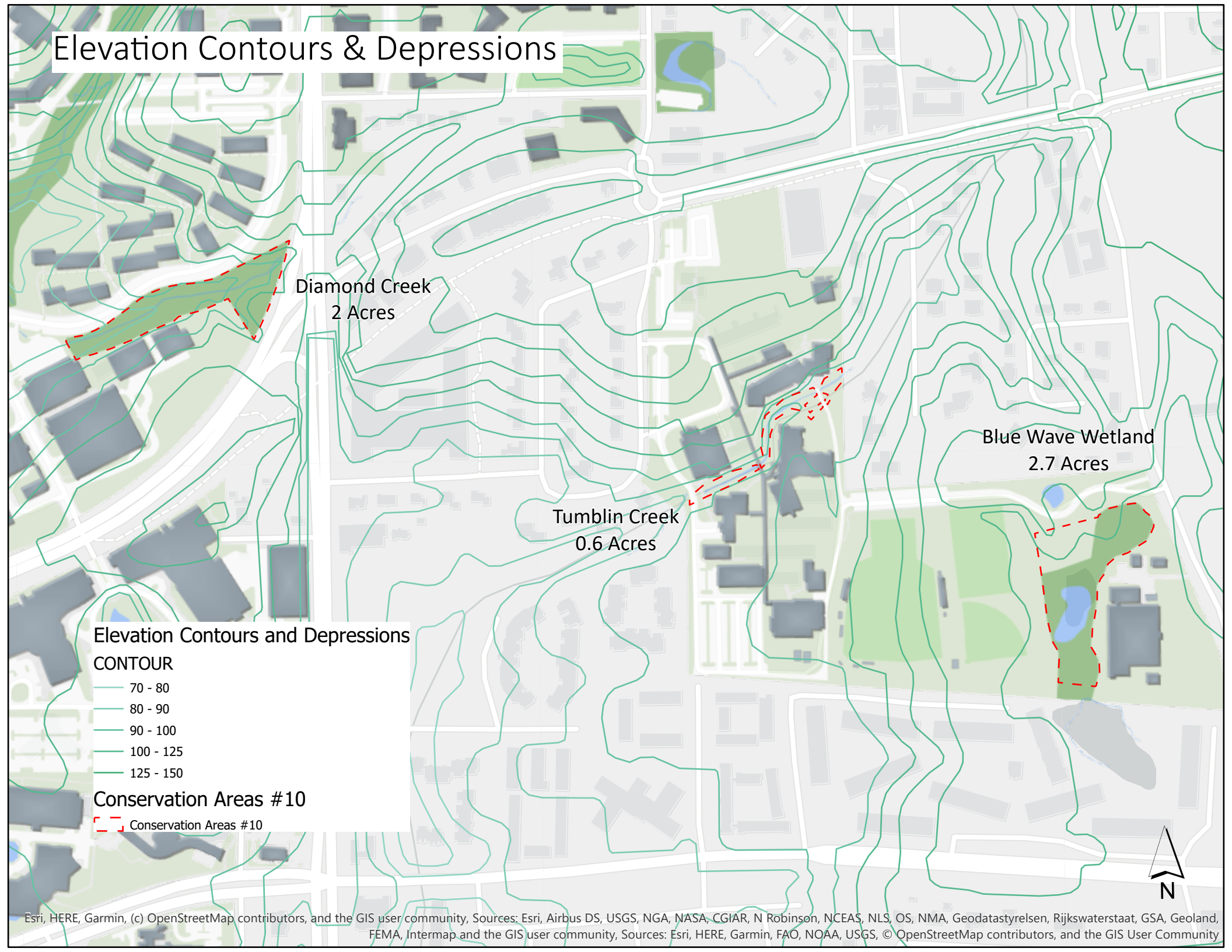
- Links to Current CALM plans
- iNaturalist Links
- Topographic Maps
- Wetlands Map
- Soils Map
- Guiding Questions

Contact Information:

Rachel Mandell – (352) 672-1836

Kaylee August – (918) 261-2773

Elevation Contours & Depressions



Diamond Creek
2 Acres

Tumblin Creek
0.6 Acres

Blue Wave Wetland
2.7 Acres

Elevation Contours and Depressions

CONTOUR

- 70 - 80
- 80 - 90
- 90 - 100
- 100 - 125
- 125 - 150

Conservation Areas #10

- Conservation Areas #10

Wetlands

Diamond Creek
2 Acres

Tumblin Creek
0.6 Acres

Blue Wave Wetland
2.7 Acres

Wetlands

Wetlands

- TRANSPORTATION, COMMUNICATION AND UTILITIES
- UPLAND FORESTS
- URBAN AND BUILT-UP
- WATER
- WETLANDS

Conservation Areas #10

- Conservation Areas #10

Soils

Diamond Creek
2 Acres

Tumblin Creek
0.6 Acres

Blue Wave Wetland
2.7 Acres

Campus Soils

Type

- Arredondo
- Blichton
- Kanapaha
- Lochloosa
- Milhopper
- Newnan
- Urban Land
- Urban Land / Millhopper

Conservation Areas #10

- Conservation Areas #10



Guiding Questions: Diamond Creek

Name: _____

Are there any obvious human interventions that impact the site negatively? Positively?

Is the conservation area accessible to all types of users (ex. Differently abled persons)?

How is this conservation area used and how could it be used in the future (nature walks, teaching, general exercise, mindfulness, etc.)?

How do the surrounding sites and uses potentially impact the conservation area?

Is this conservation area actively maintained? Should it be?

Are the boundaries of the conservation area clearly distinguishable?

Are there any new best management practices we should consider in this conservation area?

We encourage you to pause frequently and actively consider what your different senses are experiencing (hear, smell, see, feel). Describe them below:

Are there any additional observations/considerations we should be aware of for this conservation area (ex. Rare plant species)? Use this space to write down thoughts that may not fit within the other guiding questions.

Guiding Questions: Blue Wave Wetland

Name: _____

Are there any obvious human interventions that impact the site negatively? Positively?

Is the conservation area accessible to all types of users (ex. Differently abled persons)?

How is this conservation area used and how could it be used in the future (nature walks, teaching, general exercise, mindfulness, etc.)?

How do the surrounding sites and uses potentially impact the conservation area?

Is this conservation area actively maintained? Should it be?

Are the boundaries of the conservation area clearly distinguishable?

Are there any new best management practices we should consider in this conservation area?

We encourage you to pause frequently and actively consider what your different senses are experiencing (hear, smell, see, feel). Describe them below:

Are there any additional observations/considerations we should be aware of for this conservation area (ex. Rare plant species)? Use this space to write down thoughts that may not fit within the other guiding questions.

Guiding Questions: **Tumblin Creek**

Name: _____

Are there any obvious human interventions that impact the site negatively? Positively?

Is the conservation area accessible to all types of users (ex. Differently abled persons)?

How is this conservation area used and how could it be used in the future (nature walks, teaching, general exercise, mindfulness, etc.)?

How do the surrounding sites and uses potentially impact the conservation area?

Is this conservation area actively maintained? Should it be?

Are the boundaries of the conservation area clearly distinguishable?

Are there any new best management practices we should consider in this conservation area?

We encourage you to pause frequently and actively consider what your different senses are experiencing (hear, smell, see, feel). Describe them below:

Are there any additional observations/considerations we should be aware of for this conservation area (ex. Rare plant species)? Use this space to write down thoughts that may not fit within the other guiding questions.