



University of Florida

CALM Plans Follow-up Friday

*This meeting is being recorded 

5/13/2022



Meeting Goals & Agenda

Today's Meeting Goals

- Share experiences and ideas from Site Visit #10 - Lake Alice (Diamond) Creek, Blue Wave Wetland, Tumblin Creek

Meeting Agenda

- Announcements
- Core Values
- Icebreaker Question
- Site Visit 10 Recap
- Serial Testimony
- Open Discussion & Feedback

Announcements

- No more site visits!
- Appreciation event - Friday, May 20th from 5pm to 7pm (ish)



Core Values

- Committing to full participation
- Sharing collective wisdom for inclusive solutions
- Accepting shared responsibility
- Embracing creativity and a “what if?” mindset
- Supporting open & equitable discussion
- **Have Fun!**



Icebreaker Question

Now that we have visited 23 conservation areas - if you could implement ONE change to a site we've visited, regardless of cost, what would it be?

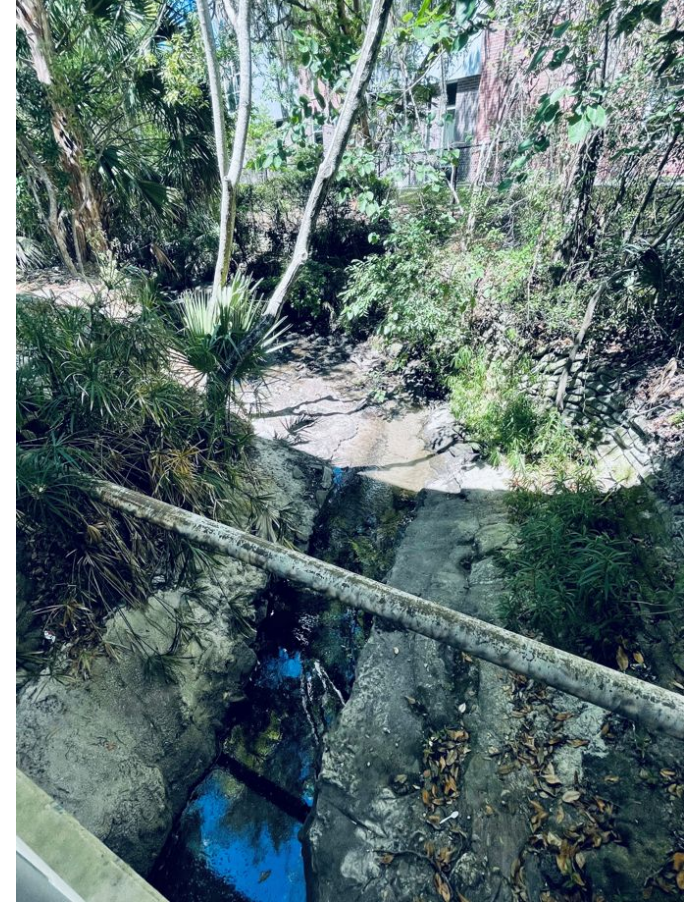
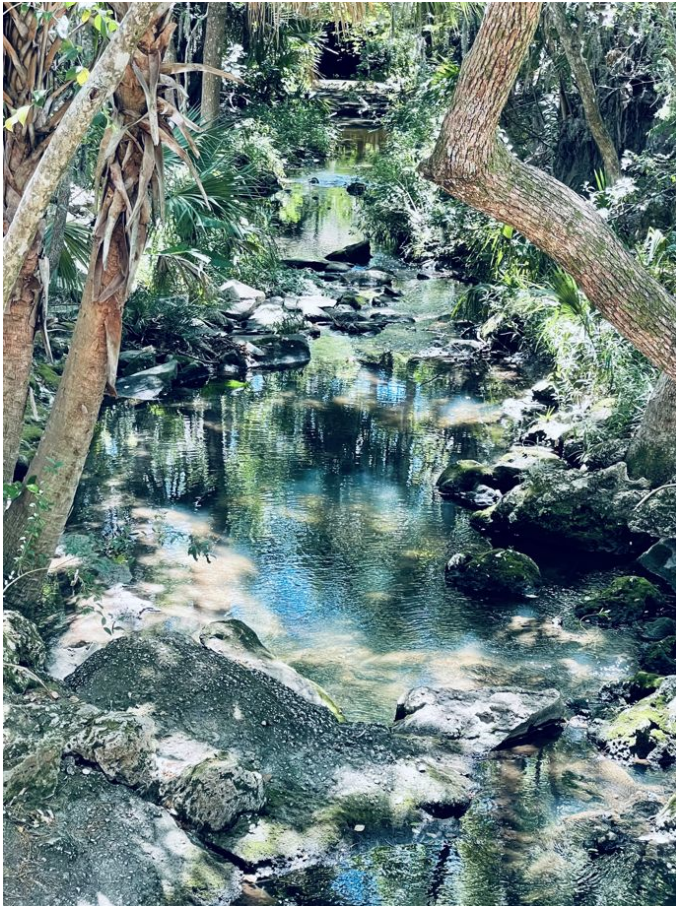
Site Visit 10 Recap

- Diamond (Lake Alice) Creek - Thanks, John!



Site Visit 10 Recap

- Tumblin Creek - John Guerra's Pictures!



Site Visit 10 Recap

- Blue Wave Wetland - 2005



Quick Overview of Serial Testimony

- Each participant is given one minute to speak.
- While a participant is speaking, attendees actively listen but do not react (stay on mute, do not write in the chat).
- If a participant decides not to speak the full minute, the group will acknowledge their full minute with silence.
- There will be ample opportunity for dialogue following this exercise.



Let's take a few minutes to jot down our thoughts...

Guiding Questions

- Are there any obvious human interventions that impact the site negatively? Positively?
- Is the conservation area accessible to all types of users (ex. Differently abled persons)?
- How is this conservation area used and how could it be used in the future (nature walks, teaching, general exercise, mindfulness, etc.)?
- How do the surrounding sites and uses potentially impact the conservation area?
- Is this conservation area actively maintained? Should it be?
- Are the boundaries of the conservation area clearly distinguishable?
- Are there any new best management practices we should consider in this conservation area?
- We encourage you to pause frequently and actively consider what your different senses are experiencing (hear, see, smell, feel).
- Are there any additional observations/considerations we should be aware of for this conservation area (ex. Rare plant species)?

Discussion

Open Discussion & Feedback

Thank you!!!