

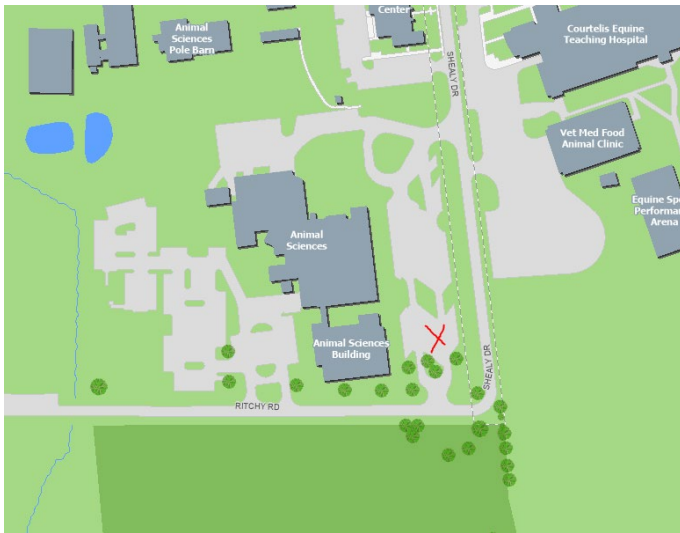
Site Visit #8: Swine Unit Woods & Bivens Rim Forest

Wednesday, April 27th, 2022 at 2:00pm

Meet-Up Location #1: Shands Renal Dialysis Parking Lot



Meet-Up Location #2: Animal Science Parking Lot



Weather (as of 4/25/22):

Wed 27 | Day

86°

19%
NNW 9 mph

Sunshine and clouds mixed. High 86F. Winds NNW at 5 to 10 mph.

Humidity
61%

UV Index
10 of 10

Sunrise
6:50 am

Sunset
8:03 pm

Where to Park:

- Parking available in Shands Renal Dialysis parking lot – No Decal Needed
- Orange Decal parking available in Animal Science parking lot
- Option to carpool from North O’Connell parking lot to site visits or from Swine Unit Woods to Bivens Rim Forest
- If you do not have a campus decal and need parking accommodations, please reach out to Rachel Mandell
- We encourage you to carpool, use public transit, or bike/walk!
- TAPS parking map: <https://taps.ufl.edu/parking-info/parking-map/>

Core Values:

- Committing to full participation
- Sharing collective wisdom for inclusive solutions
- Accepting shared responsibility
- Embracing creativity and a ‘what if?’ mindset
- Supporting open and equitable discussion
- **Have Fun!**

What to Bring:

- Water
- Sunscreen
- Insect Repellent
- Clipboard
- Pen/Pencil
- Raincoat or Poncho
- Shoes you don’t mind getting wet

Contents for Review:

- Links to Current CALM plans
- iNaturalist Links
- Topographic Maps
- Wetlands Map
- Soils Map
- Archeology Map
- Guiding Questions

Links to Current CALM Plans:

[Swine Unit Woods](#)
[Bivens Rim Forest](#)

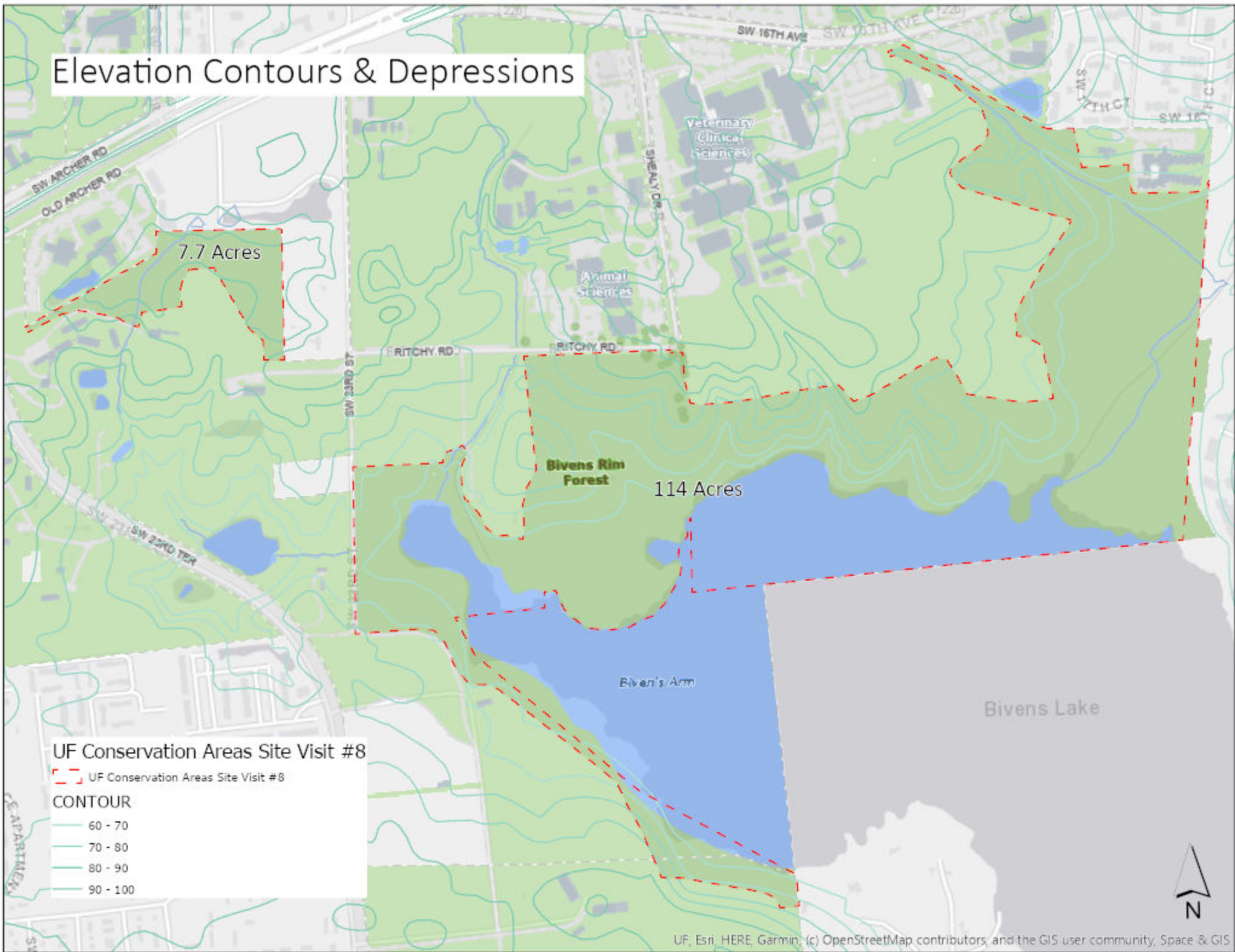
iNaturalist Links:

Swine Unit Woods – none available
[Bivens Rim Forest](#)

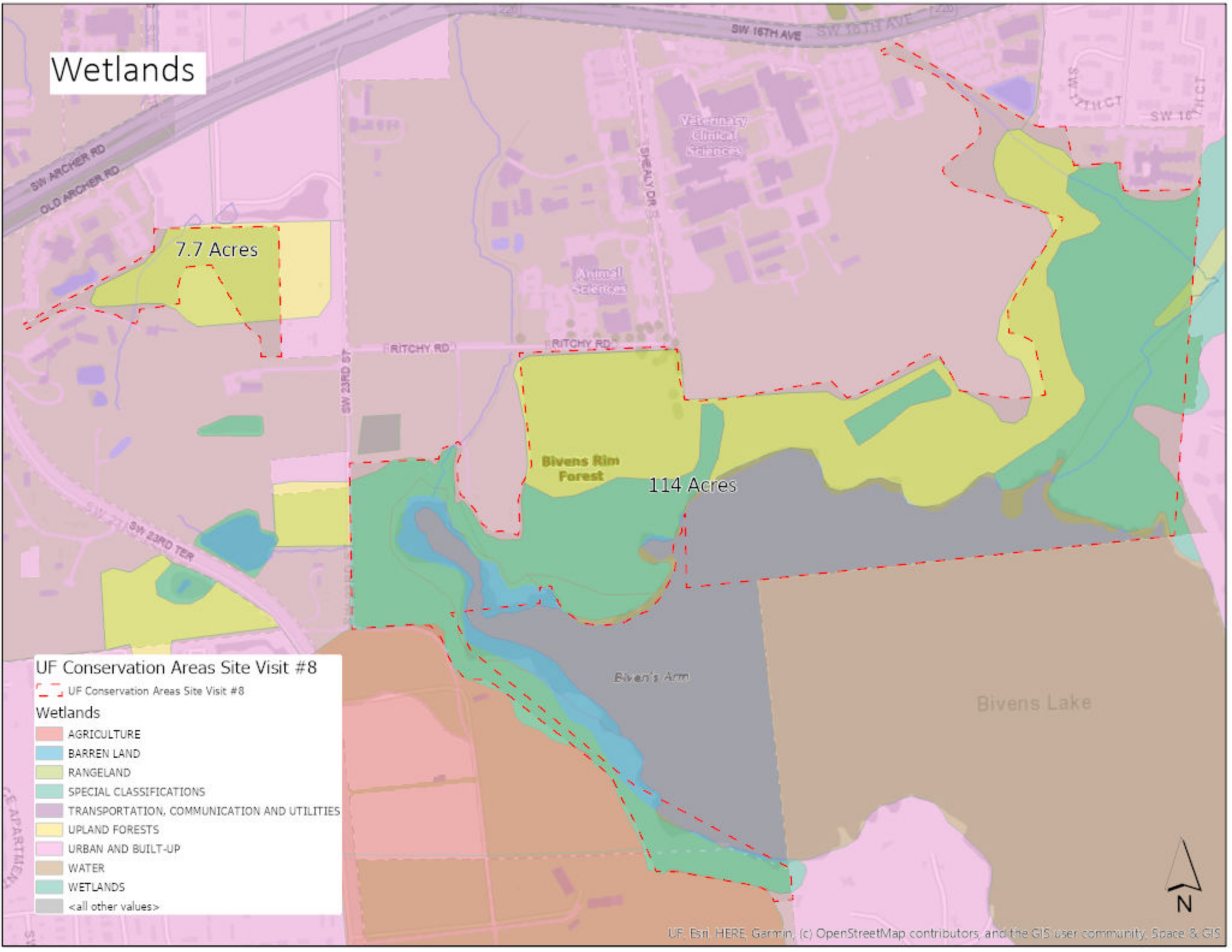
Contact Information:

Rachel Mandell – (352) 672-1836
Kaylee August – (918) 261-2773

Elevation Contours & Depressions



Wetlands



7.7 Acres

Bivens Rim Forest

114 Acres

Bivens Arm

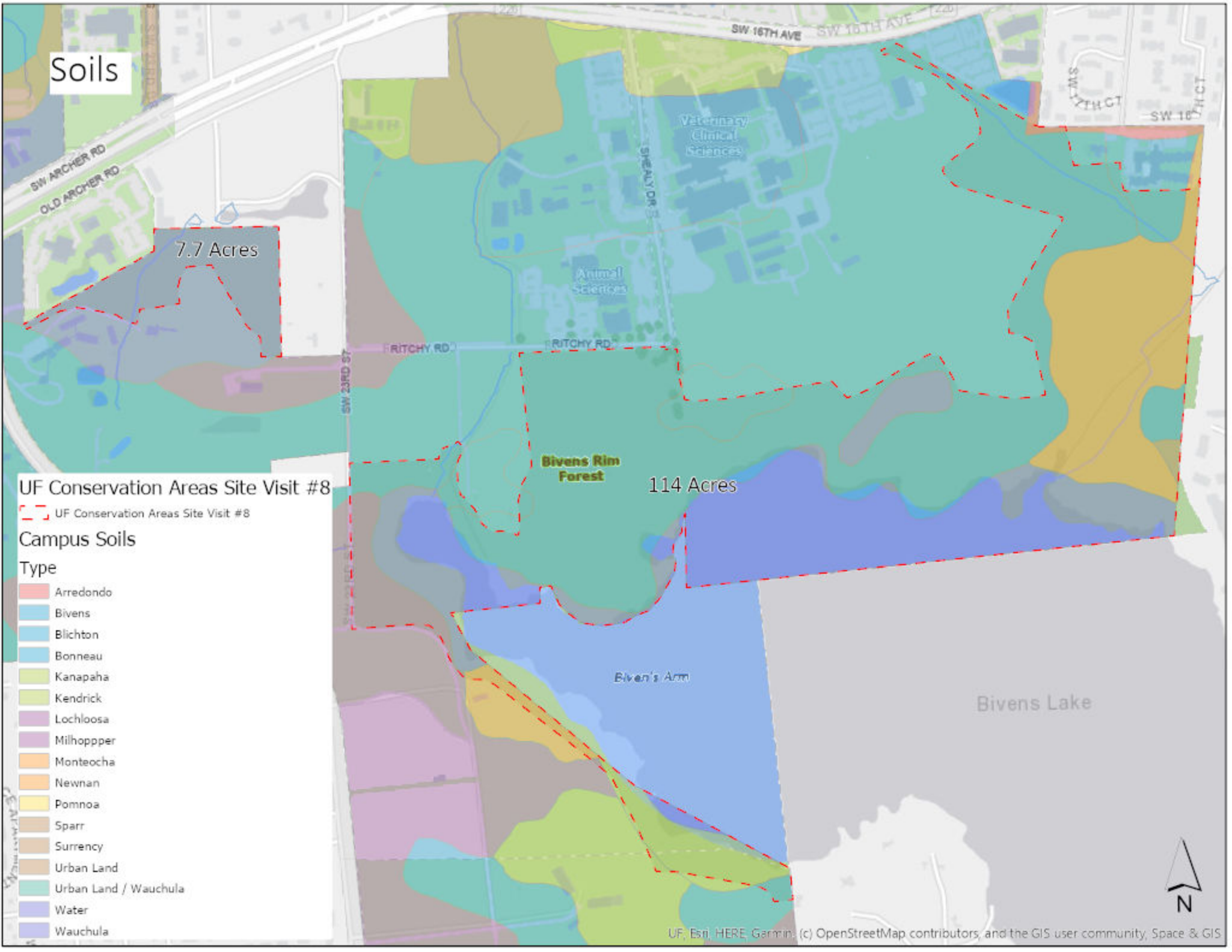
Bivens Lake

UF Conservation Areas Site Visit #8

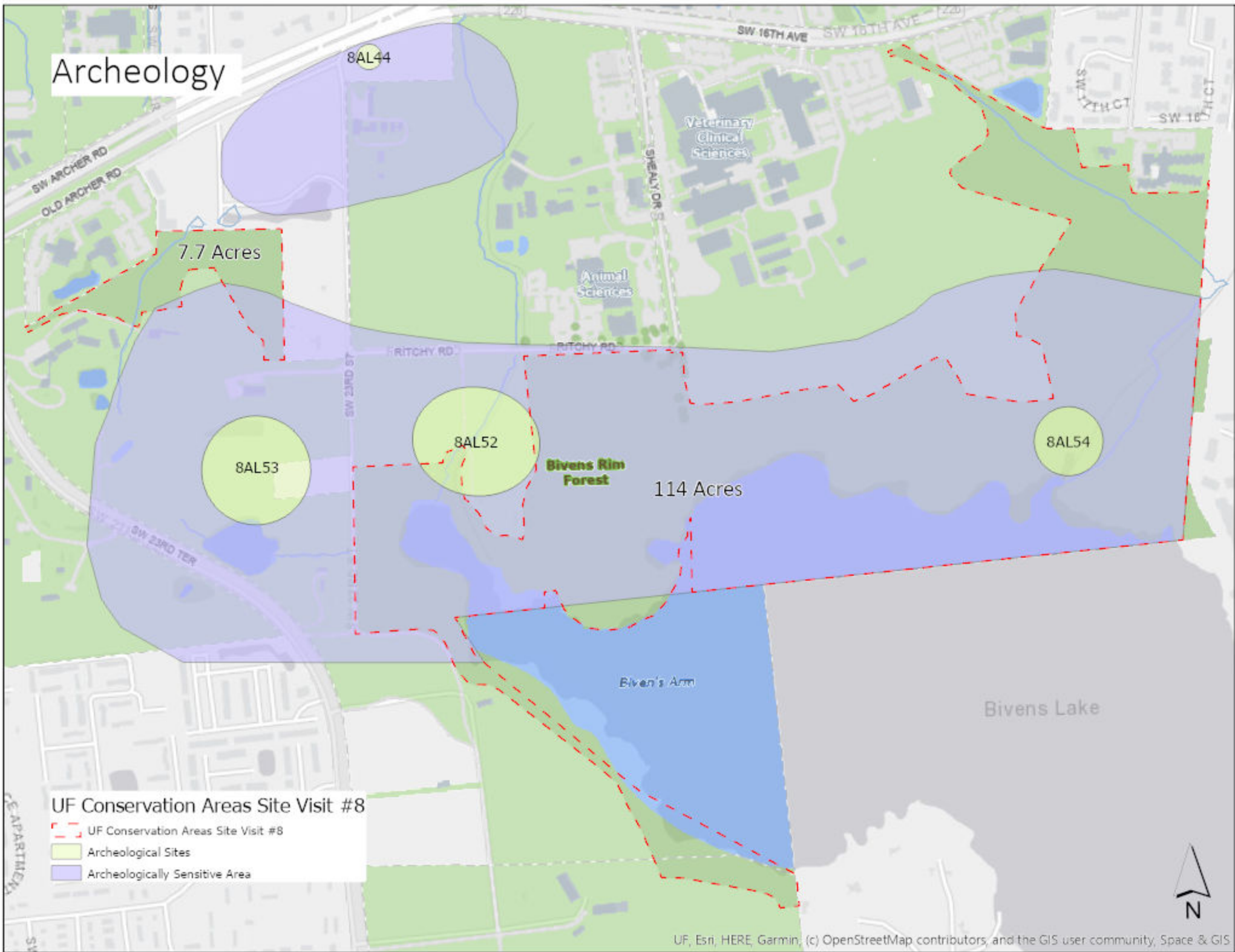
UF Conservation Areas Site Visit #8

Wetlands

- AGRICULTURE
- BARREN LAND
- RANGELAND
- SPECIAL CLASSIFICATIONS
- TRANSPORTATION, COMMUNICATION AND UTILITIES
- UPLAND FORESTS
- URBAN AND BUILT-UP
- WATER
- WETLANDS
- <all other values>



Archeology



UF Conservation Areas Site Visit #8

- UF Conservation Areas Site Visit #8
- Archeological Sites
- Archeologically Sensitive Area

Guiding Questions: Swine Unit Woods

Name: _____

Are there any obvious human interventions that impact the site negatively? Positively?

Is the conservation area accessible to all types of users (ex. Differently abled persons)?

How is this conservation area used and how could it be used in the future (nature walks, teaching, general exercise, mindfulness, etc.)?

How do the surrounding sites and uses potentially impact the conservation area?

Is this conservation area actively maintained? Should it be?

Are the boundaries of the conservation area clearly distinguishable?

Are there any new best management practices we should consider in this conservation area?

We encourage you to pause frequently and actively consider what your different senses are experiencing (hear, smell, see, feel). Describe them below:

Are there any additional observations/considerations we should be aware of for this conservation area (ex. Rare plant species)? Use this space to write down thoughts that may not fit within the other guiding questions.

Guiding Questions: Bivens Rim Forest

Name: _____

Are there any obvious human interventions that impact the site negatively? Positively?

Is the conservation area accessible to all types of users (ex. Differently abled persons)?

How is this conservation area used and how could it be used in the future (nature walks, teaching, general exercise, mindfulness, etc.)?

How do the surrounding sites and uses potentially impact the conservation area?

Is this conservation area actively maintained? Should it be?

Are the boundaries of the conservation area clearly distinguishable?

Are there any new best management practices we should consider in this conservation area?

We encourage you to pause frequently and actively consider what your different senses are experiencing (hear, smell, see, feel). Describe them below:

Are there any additional observations/considerations we should be aware of for this conservation area (ex. Rare plant species)? Use this space to write down thoughts that may not fit within the other guiding questions.