

January 27, 2022

Melanie K. Heflin, Project Manager II
Planning, Design and Construction
245 Gale Lemerand Drive
Gainesville, FL 32611

RE: UF-656 Landscape Master Plan Implementation – Tree Mitigation Update, NE Gateway

Dear Melanie:

Please see the following for your review and coordination with the LVL Committee regarding additional tree removals at NE Gateway and associated mitigation. As you know, various issues during construction as well as the addition of Phase 2 improvements have led to the need to remove additional trees. Please see below for a description and recommendation concerning each tree in question. These removals require 30 tree replacements. Phase 2 adds 20 new trees that can be used toward replacement. The net result is a requirement to pay for 10 replacement trees, which brings the NE Gateway project's total mitigation to \$22,500.00. Note this total assumes that mitigation will not be required for the seven Sabal Palms that Alachua Conservation Trust relocated in September 2021. As you know, this was an item reviewed with the LVL Committee during this project's update on October 4, 2021. It would be helpful to continue the conversation about this issue and gain direction from LVL regarding if tree mitigation will be required for these relocated palms. Please let us know if you need anything further and/or would like our participation in the above discussions.

Sincerely,



C. Elisabeth Manley, PLA
Principal - Manley Design, LLC

Specific Information Regarding Additional Tree Removals

Please also see the tree photos and locations following this summary.

1. Additional Tree Removal, Tree 109, 29" Drake Elm

This tree is in an existing planter within the sidewalk south of the Little Hall parking lot, near the southwestern corner of Tigert Hall. Proposed Phase 2 improvements include a new storm line that needs to connect new parking lot drainage to an existing manhole south of this tree. Unfortunately this connection requires removal of this tree.

- Mitigation Addition: This tree is of heritage size and requires additional mitigation. Removal of this tree adds 7 replacement trees to the project's mitigation total.

2. Additional Tree Removal, Tree 120, 29" Shumard Oak

This tree is in an existing parking lot end island in the southeastern corner of the existing Little Hall parking lot. This tree has been protected throughout construction to date, but it is within an area of significant Phase 1 infrastructure and paving improvements. UF Facilities Grounds has recently trimmed this tree's canopy for construction equipment access. Proposed Phase 2 stormwater and paving improvements will impact additional, currently undisturbed areas of this tree's root zone. When proposed Phase 2 improvements were generally reviewed with UF Facilities Grounds on site, their recommendation was to remove this tree due to concerns about future decline and then need to remove within the newly installed project.

- Mitigation Addition: This tree is of heritage size and requires additional mitigation. Removal of this tree would add a 7 replacement trees to the project's mitigation total.

3. Additional Tree Removal, Trees 177 – 179, Bald Cypress, all 5" DBH:

These three trees are in an existing parking lot end island at the eastern end of the Criser Hall parking lot. This project intended on relocating these three trees. However, there is an existing fire waterline located below these trees, and the existing planting area is relatively small and surrounded by paving. These two issues make it impossible to utilize a tree spade to remove these trees, and it is not feasible to remove by hand. A new fire hydrant is also proposed within this island.

- Mitigation Addition: Removal of this tree adds 6 replacement trees to the project's mitigation total.

4. Additional Tree Removal, Tree 193, 24" Loblolly Pine:

This tree is located near the southwestern corner of Gerson Hall, along the northern edge of this project. Existing water lines near this tree need to be reconfigured for a number of unavoidable reasons. This utility work will impact this tree's root zone significantly. The tree's existing condition indicates previous impacts to its canopy, so there is additional concern about this tree's resiliency.

- Mitigation Addition: Removal of this tree adds 2 replacement trees to the project's mitigation total.

5. Additional Tree Removals, Tree 232: 21" Sabal Palm, Tree 233: 17.5" Loblolly Pine, and Tree 234: 16" Sabal Palm:

These trees are within a cluster behind a low landscape wall at the southwestern corner of Union Rd. and 13th Street. Their location conflicts with the footing of the proposed gateway wall feature.

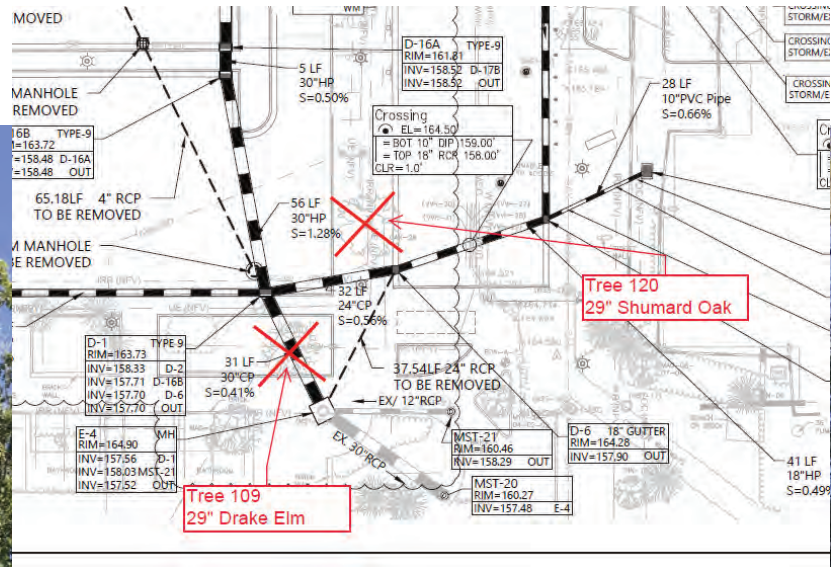
- Mitigation Addition: Removal of these trees adds 6 replacement trees to the project's mitigation total.

6. Additional Tree Removal, Tree 264: 14" D.D. Blanchard Magnolia:

This tree was located north of Tigert Hall and has been removed. Its location conflicted with proposed walk improvements.

- Mitigation Addition: Removal of this tree adds 2 replacement trees to the project's mitigation total.

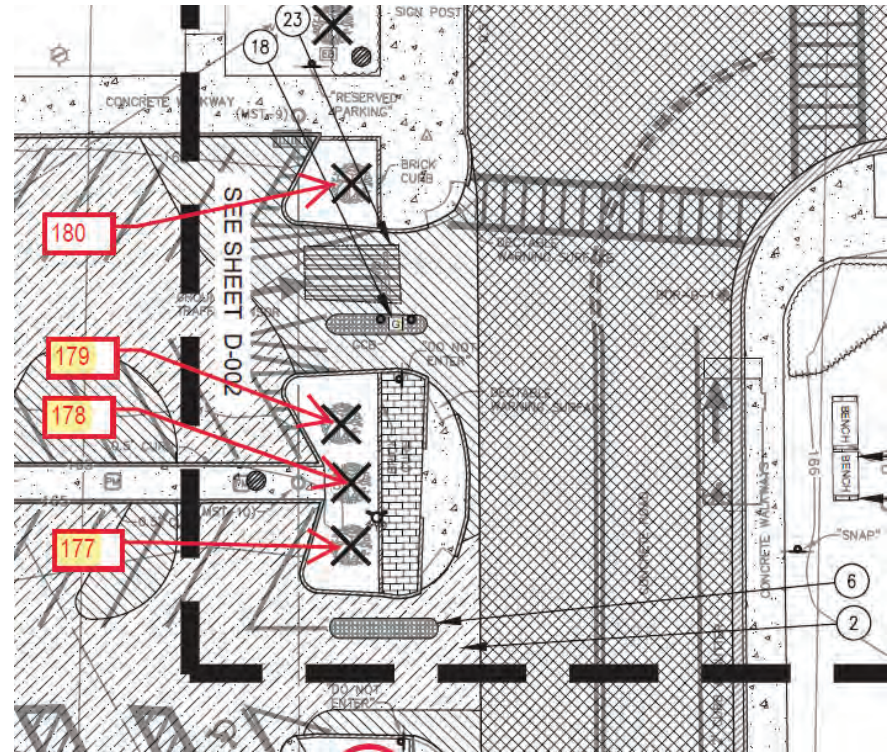
END OF MEMO



Tree No. 120
29" Shumard Oak



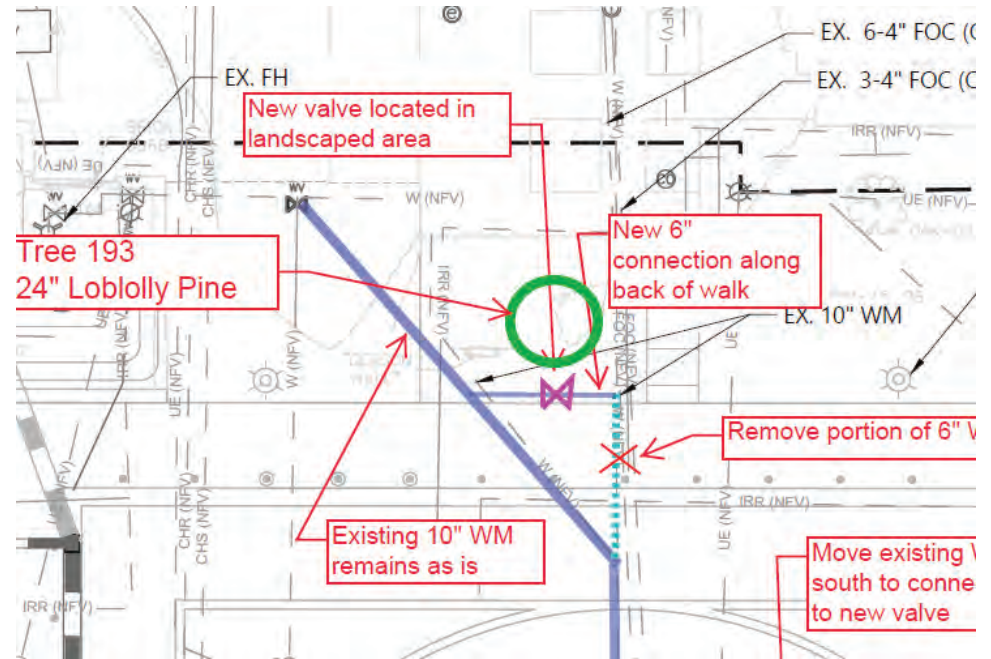
Tree No. 109
29" Drake Elm



Tree No.s 177 - 179
Three 5" Bald Cypress

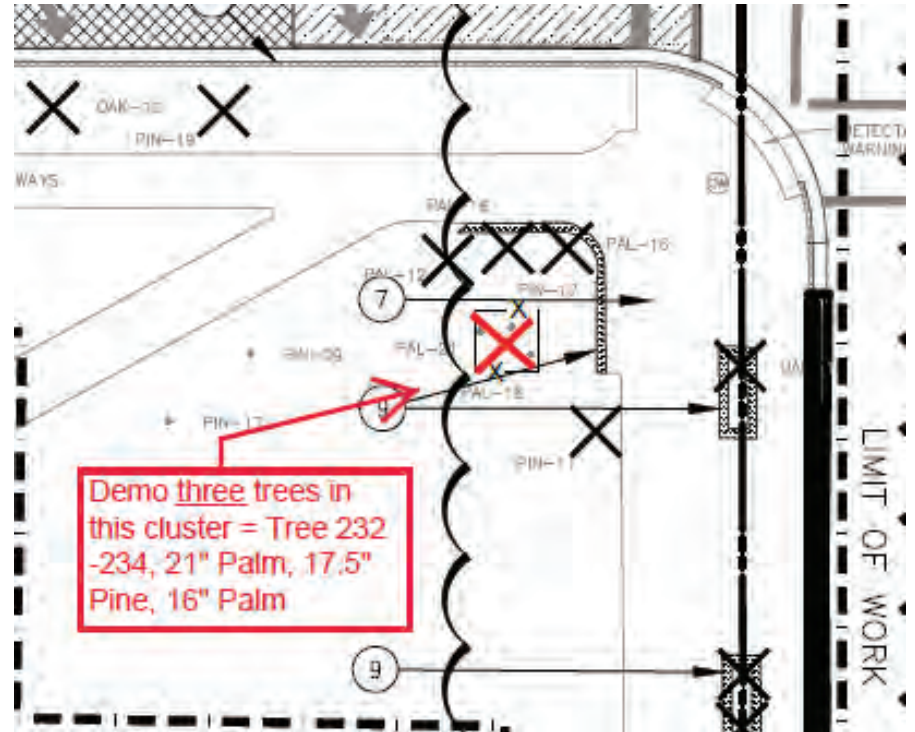


Tree No. 193
24" Loblolly Pine



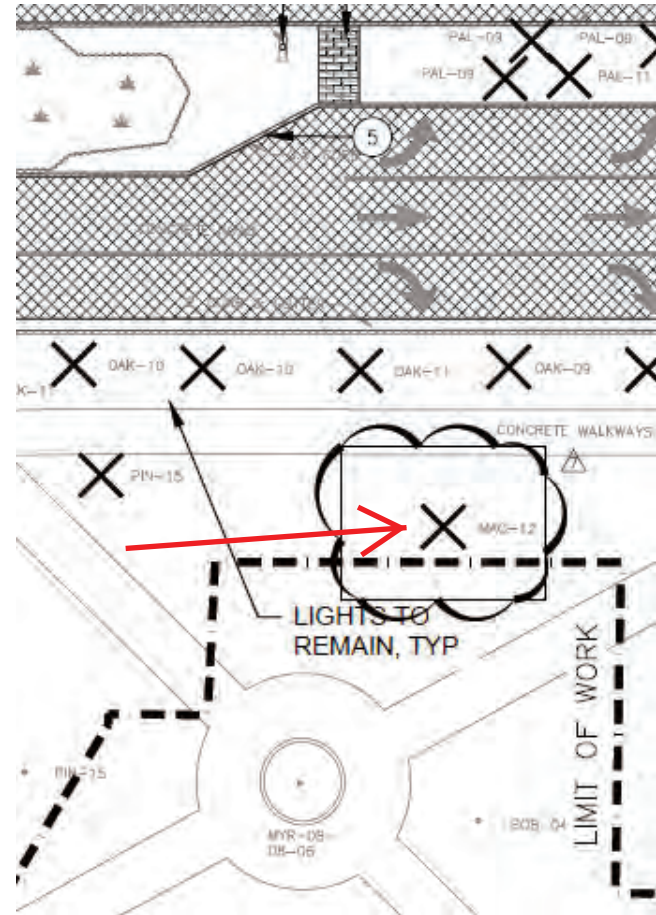


Tree No.s 232-234
21" Sabal Palm, 17.5" Loblolly Pine, 16" Sabal Palm





Tree 264
14" DD Blanchard Magnolia



REPORT TO THE LAKES VEGETATION AND LANDSCAPING COMMITTEE

TO:	The LVL Committee	FOR:	02-10-22 LVLC meeting.
VIA:	Carlos Dougnac, Assistant Vice President, PDC	FROM:	Keith Humphreys, Project Manager
REQUESTOR:	Keith Humphreys UF PD&C	PRESENTERS:	Keith Humphreys and Design Staff

PHASE:	Committee Responsibilities:	STATUS AND PRIOR COMMENTS:	DATE:
X PROGRAMMING	<i>The committee will review and recommend approval/denial of general site suitability - having evaluated impacts to trees, landscape, natural areas, and lakes.</i>	Approved site as presented.	02-11-21
X SCHEMATIC DESIGN	<i>The committee will review and recommend approval/denial of tree removal - plans for transplants, replacements and/or mitigation, based on the building footprint, utility corridors, and other construction activities.</i>		02-10-2022
DESIGN DEVELOPMENT	<i>The committee will review and recommend approval/denial of final landscaping - appropriateness and inclusion of any mitigation for tree removal.</i>		

BACKGROUND INFORMATION:

PROJECT:
UF-671, Harn Museum American Art Wing

SITE:
Cultural Plaza corner of Hull Road and Bledsoe Road. See attached location map.

STATUS:
Project has completed Advanced Schematic Design Drawings
CM selection is in progress
Fundraising has begun

- OBJECTIVES:**
- To receive approval of current site plan.
 - To receive approval to move onto DD phase

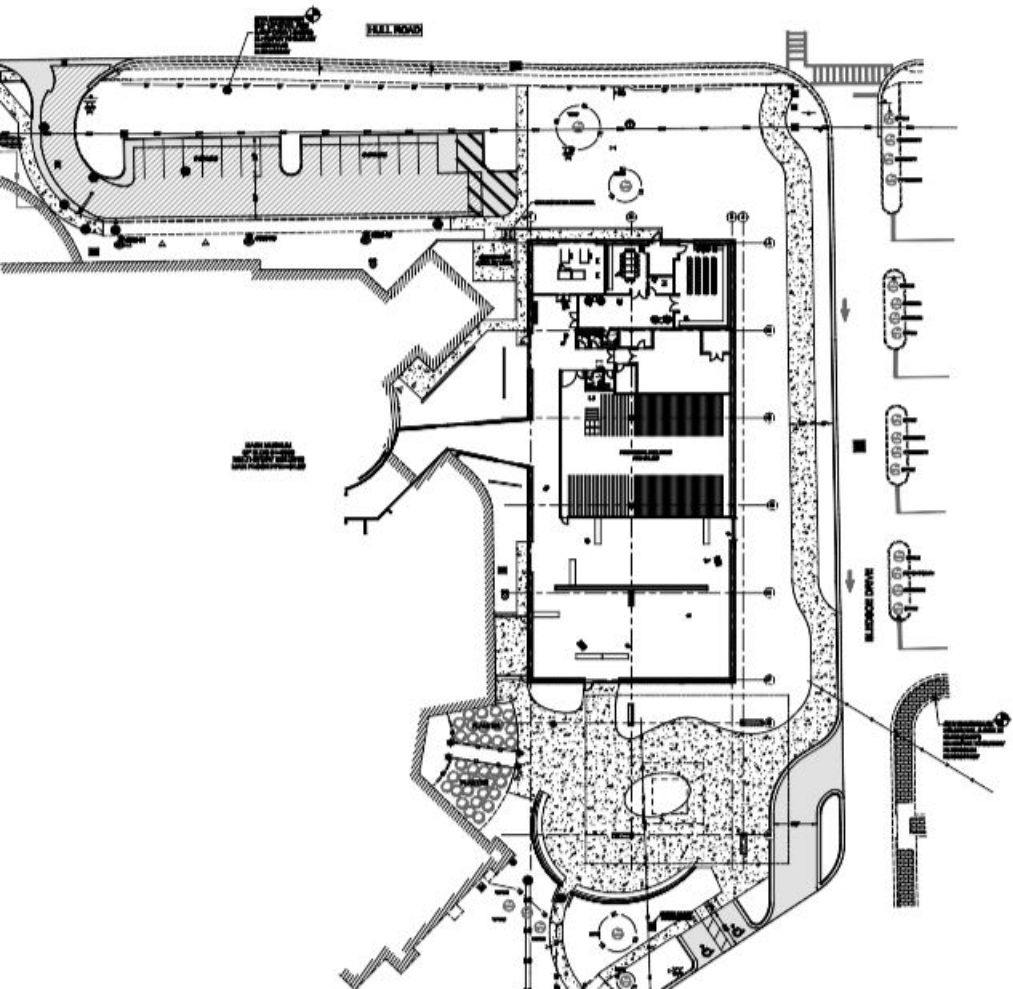
PROJECT PHASE AND PRESENTATION NARRATIVE:

Presentation provides a current layout of building location and parking lot to the east. It continues with a scope of the new project and the footprint of the new building that extends into current parking lot. There is a drawing that shows the new building with an outline of the new drop off area. Finally, a drawing that shows the tree impact and, finishing up with a request for approval.

- ENCLOSURES:**
1. Presentation
 2. Location Map
 3. Site Plan

Existing Cultural Plaza





UF-671

Harn Museum American Art Wing

ASD Phase

LVL

February 10th, 2022

**Keith Humphreys, Project Manager
Planning, Design & Construction**

UF-671
Harn Museum American Art Wing

- Location
- Scope
- Tree impacts
- Current Status
- Committee Approval/Recommendation

Harn Existing Site Plan

Expansion Location:

In the Cultural Plaza East of the Harn Museum. Located at the corner of Hull Road and Bledsoe Road in the parking lot.

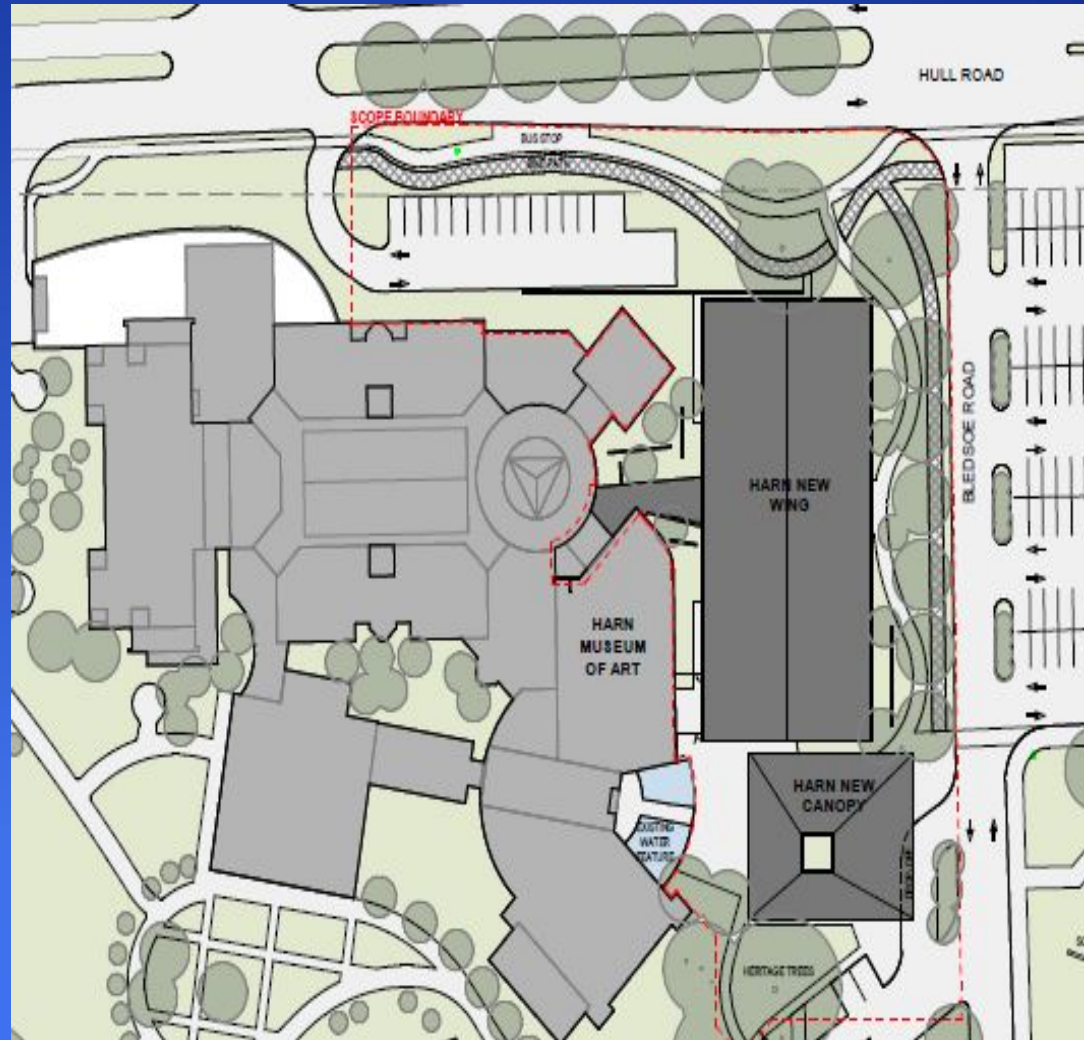


ASD Site Plan

Project Scope:

The American Art wing will expand into parking lot utilizing the area up to Bledsoe Drive.

The building is one story consisting of 20,000 GSF. The building will consist of 2 Art Galleries plus a Works On Paper Study Center, a Conservation Lab, and additional storage. There will be a dedicated drop off area and added green space to comply with the Master Plan for the cultural plaza.



Harn Parking Lot

Trees
Impacted.

1 - Magnolia

2 - Laurel
Oaks



Trees
Impacted.

8 - Palms



Trees Previously Approved

Trees
Impacted.

3 – Shumard
Oaks



Current Status

- Advanced Schematic Drawings completed
- Fund Raising underway
- Seeking Committee Approval of the ASD Drawings, removal of trees within the construction area, and the approval to move forward with the Design Development phase.